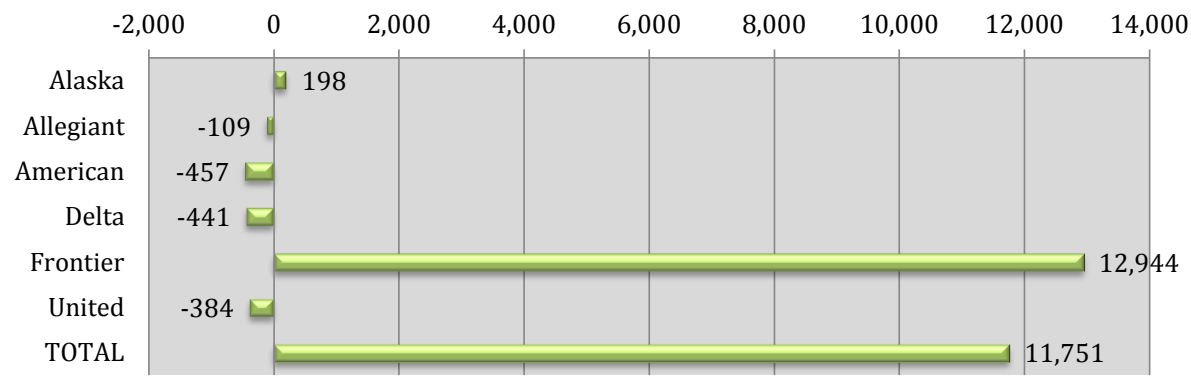


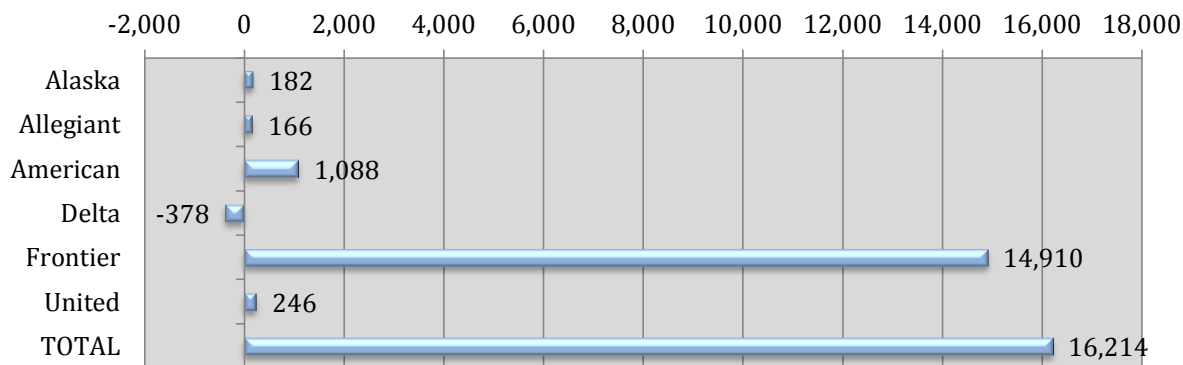
Monthly Reported Enplaned Passengers YOY Δ



	REPORTED MONTH			
	Dec-16	Dec-15	YOY Δ	% Δ

PASSENGERS				
Alaska	1,940	1,742	198	11.4%
Allegiant	2,631	2,740	-109	-4.0%
American	14,186	14,643	-457	-3.1%
Delta	6,150	6,591	-441	-6.7%
Frontier	12,944	0	12,944	-
United	23,934	24,318	-384	-1.6%
TOTAL	61,785	50,034	11,751	23.5%

Monthly Reported Seats YOY Δ



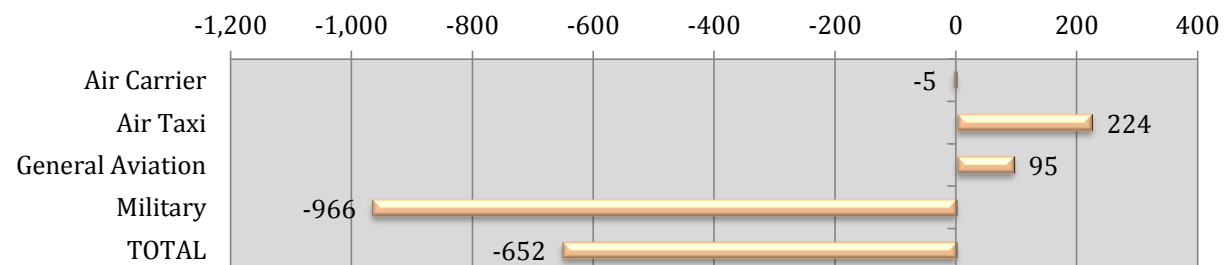
SEATS				
Alaska	2,356	2,174	182	8.4%
Allegiant	3,250	3,084	166	5.4%
American	17,857	16,769	1,088	6.5%
Delta	6,798	7,176	-378	-5.3%
Frontier	14,910	0	14,910	-
United	27,730	27,484	246	0.9%
TOTAL	72,901	56,687	16,214	28.6%

Monthly Reported Load Factor YOY Δ

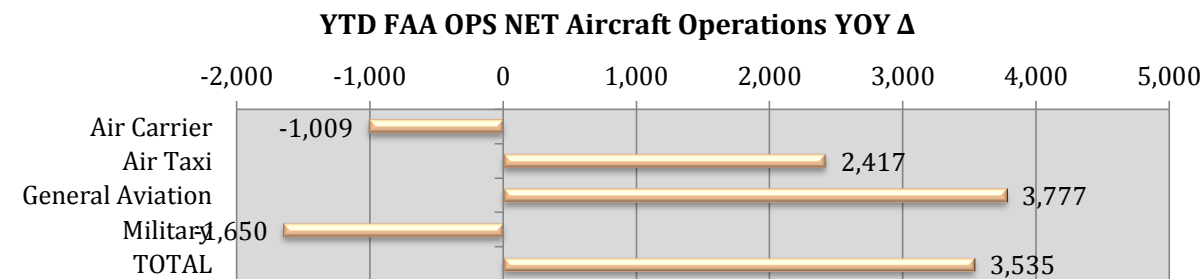
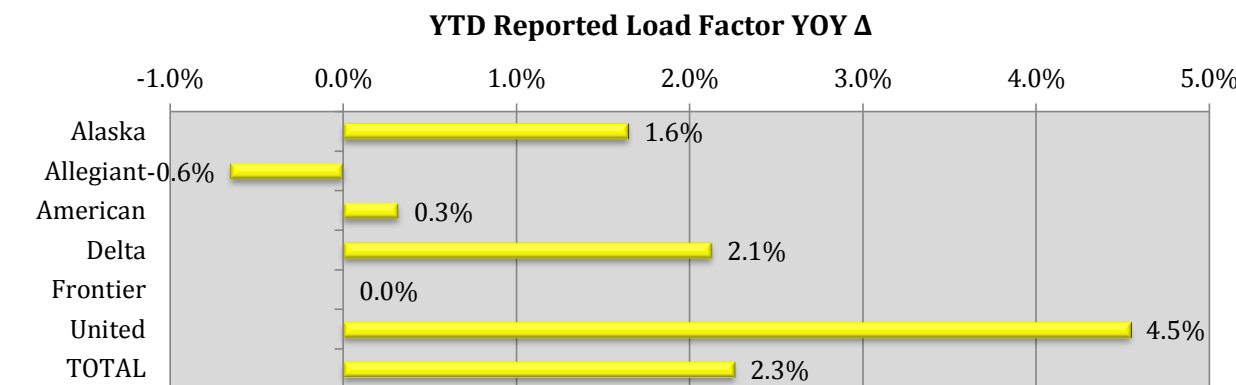
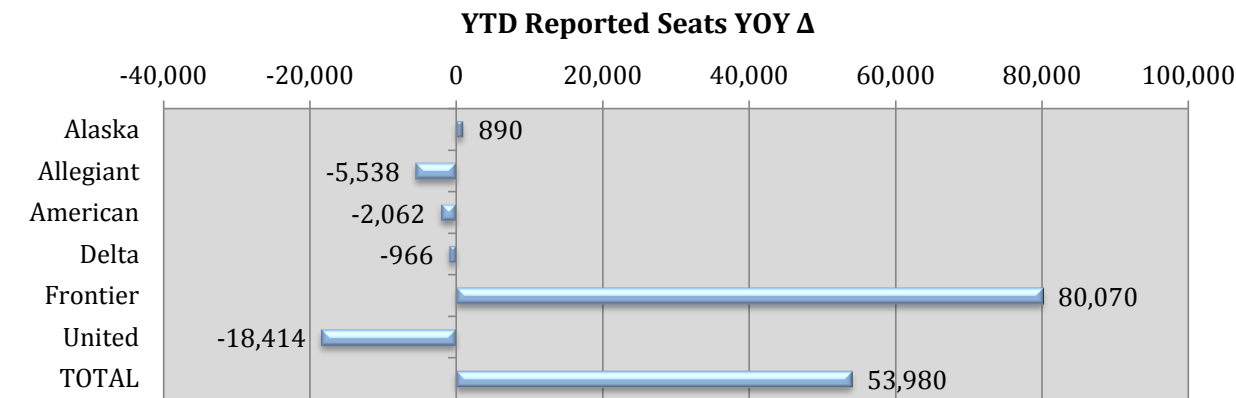
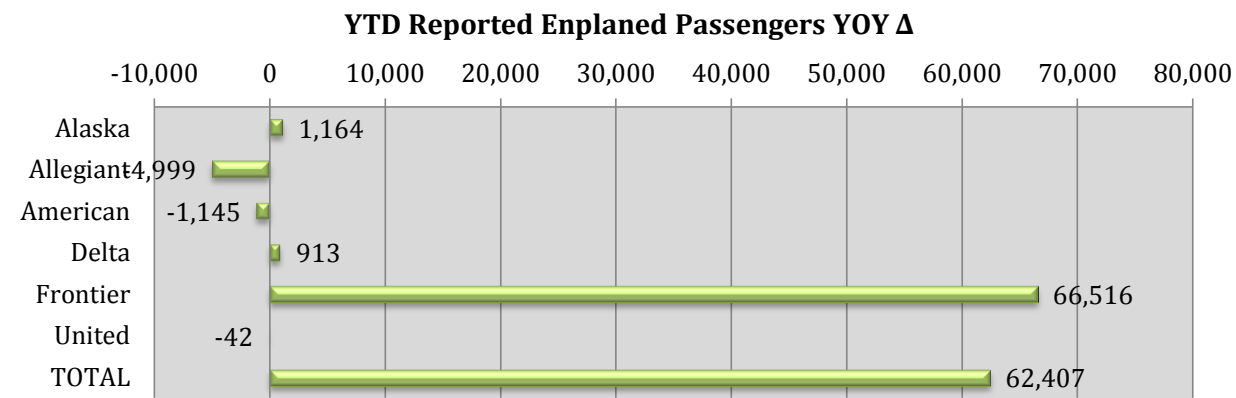


LOAD FACTOR				
Alaska	82.3%	80.1%	-	2.2%
Allegiant	81.0%	88.8%	-	-7.9%
American	79.4%	87.3%	-	-7.9%
Delta	90.5%	91.8%	-	-1.4%
Frontier	86.8%	-	-	-
United	86.3%	88.5%	-	-2.2%
TOTAL	84.8%	88.3%	-	-3.5%

Monthly FAA OPS NET Aircraft Operations YOY Δ



OPERATIONS				
Air Carrier	1,109	1,114	-5	-0.4%
Air Taxi	1,083	859	224	26.1%
General Aviation	4,122	4,027	95	2.4%
Military	1,560	2,526	-966	-38.2%
TOTAL	7,874	8,526	-652	-7.6%



	REPORTED YEAR-TO-DATE			
	YTD 2016	YTD 2015	YOY Δ	% Δ
PASSENGERS				
Alaska	21,953	20,789	1,164	5.6%
Allegiant	29,221	34,220	-4,999	-14.6%
American	167,565	168,710	-1,145	-0.7%
Delta	77,488	76,575	913	1.2%
Frontier	66,516	0	66,516	-
United	286,447	286,489	-42	0.0%
TOTAL	649,190	586,783	62,407	10.6%

SEATS				
Alaska	26,044	25,154	890	3.5%
Allegiant	34,132	39,670	-5,538	-14.0%
American	195,130	197,192	-2,062	-1.0%
Delta	83,974	84,940	-966	-1.1%
Frontier	80,070	0	80,070	-
United	331,278	349,692	-18,414	-5.3%
TOTAL	750,628	696,648	53,980	7.7%

LOAD FACTOR				
Alaska	84.3%	82.6%	-	1.6%
Allegiant	85.6%	86.3%	-	-0.6%
American	85.9%	85.6%	-	0.3%
Delta	92.3%	90.2%	-	2.1%
Frontier	83.1%	-	-	-
United	86.5%	81.9%	-	4.5%
TOTAL	86.5%	84.2%	-	2.3%

OPERATIONS				
Air Carrier	12,912	13,921	-1,009	-7.2%
Air Taxi	12,287	9,870	2,417	24.5%
General Aviation	61,307	57,530	3,777	6.6%
Military	43,848	45,498	-1,650	-3.6%
TOTAL	130,354	126,819	3,535	2.8%