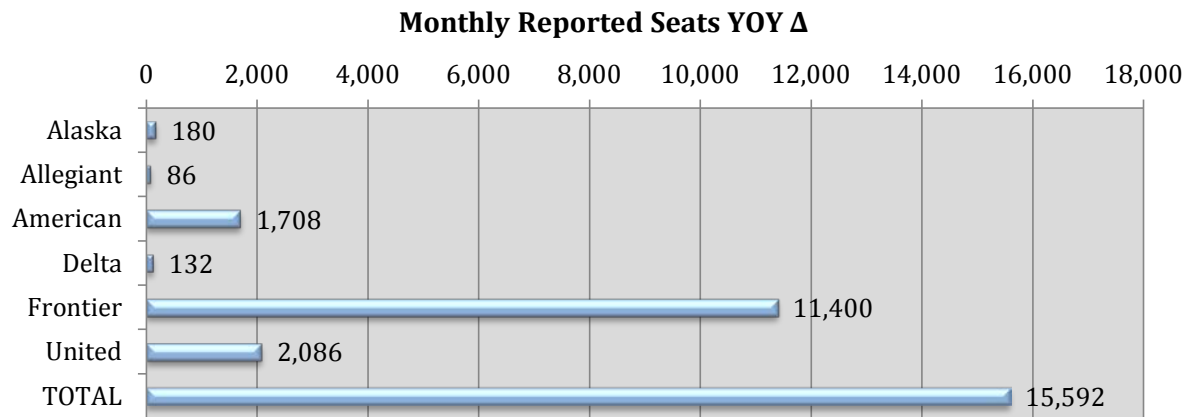
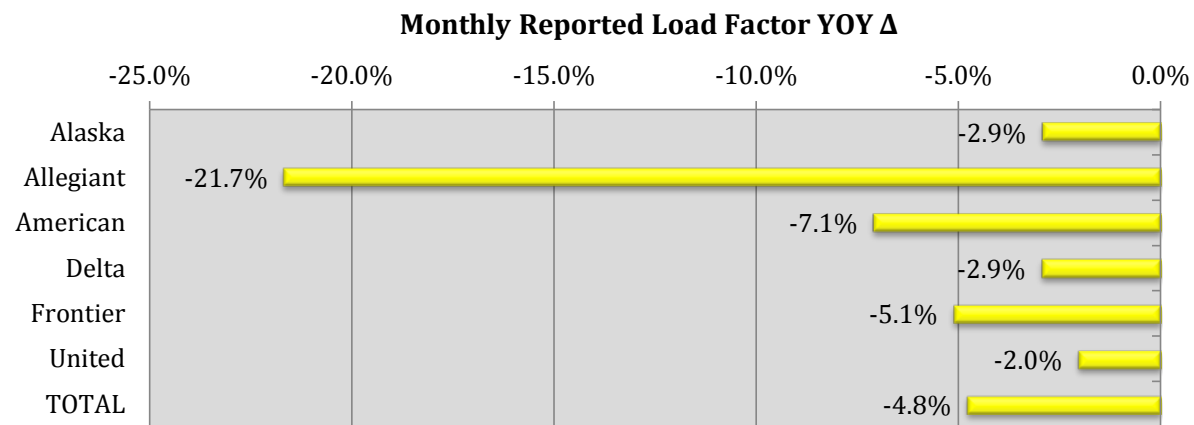


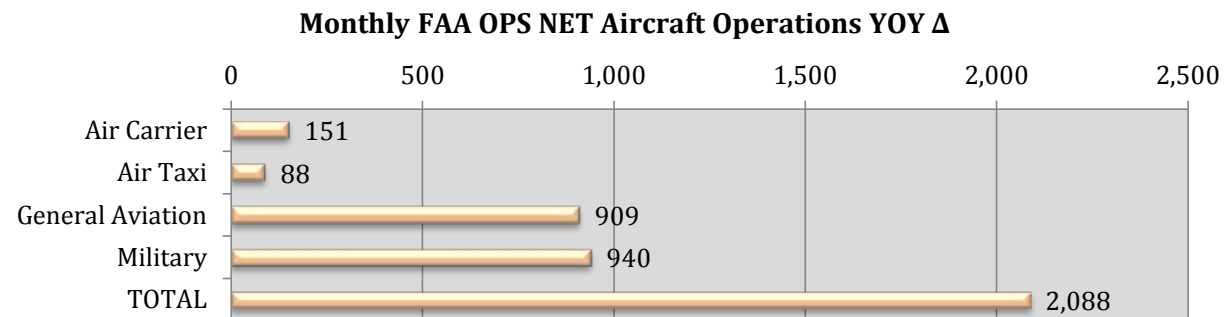
	REPORTED MONTH			
	Apr-17	Apr-16	YOY Δ	% Δ
PASSENGERS				
Alaska	1,984	1,889	95	5.0%
Allegiant	2,068	2,579	-511	-19.8%
American	13,112	12,750	362	2.8%
Delta	6,248	6,327	-79	-1.2%
Frontier	11,545	2,241	9,304	-
United	24,306	23,105	1,201	5.2%
TOTAL	59,263	48,891	10,372	21.2%



	Apr-17	Apr-16	YOY Δ	% Δ
SEATS				
Alaska	2,280	2,100	180	8.6%
Allegiant	2,742	2,656	86	3.2%
American	16,140	14,432	1,708	11.8%
Delta	6,878	6,746	132	2.0%
Frontier	13,950	2,550	11,400	447.1%
United	28,966	26,880	2,086	7.8%
TOTAL	70,956	55,364	15,592	28.2%



	Apr-17	Apr-16	YOY Δ	% Δ
LOAD FACTOR				
Alaska	87.0%	90.0%	-	-2.9%
Allegiant	75.4%	97.1%	-	-21.7%
American	81.2%	88.3%	-	-7.1%
Delta	90.8%	93.8%	-	-2.9%
Frontier	82.8%	87.9%	-	-5.1%
United	83.9%	86.0%	-	-2.0%
TOTAL	83.5%	88.3%	-	-4.8%



	PRIOR MONTH OPERATIONS			
	Mar-17	Mar-16	YOY Δ	% Δ
OPERATIONS				
Air Carrier	1,079	928	151	16.3%
Air Taxi	1,083	995	88	8.8%
General Aviation	5,415	4,506	909	20.2%
Military	3,321	2,381	940	39.5%
TOTAL	10,898	8,810	2,088	23.7%

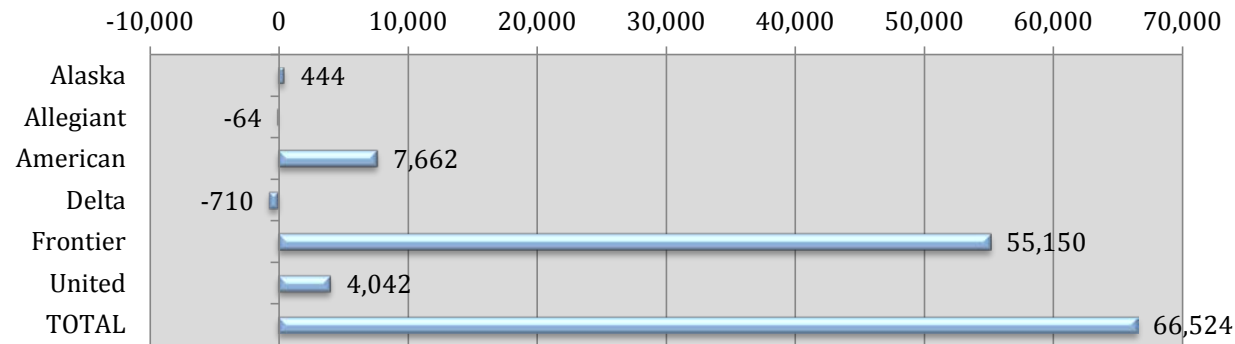
YTD Reported Enplaned Passengers YOY Δ



PASSENGERS

Alaska	6,963	6,793	170	2.5%
Allegiant	8,773	10,195	-1,422	-13.9%
American	51,779	47,085	4,694	10.0%
Delta	23,503	24,625	-1,122	-4.6%
Frontier	48,837	2,241	46,596	2079.3%
United	90,661	88,166	2,495	2.8%
TOTAL	230,516	179,105	51,411	28.7%

YTD Reported Seats YOY Δ



SEATS

Alaska	8,886	8,442	444	5.3%
Allegiant	11,144	11,208	-64	-0.6%
American	63,880	56,218	7,662	13.6%
Delta	26,108	26,818	-710	-2.6%
Frontier	57,700	2,550	55,150	2162.7%
United	108,628	104,586	4,042	3.9%
TOTAL	276,346	209,822	66,524	31.7%

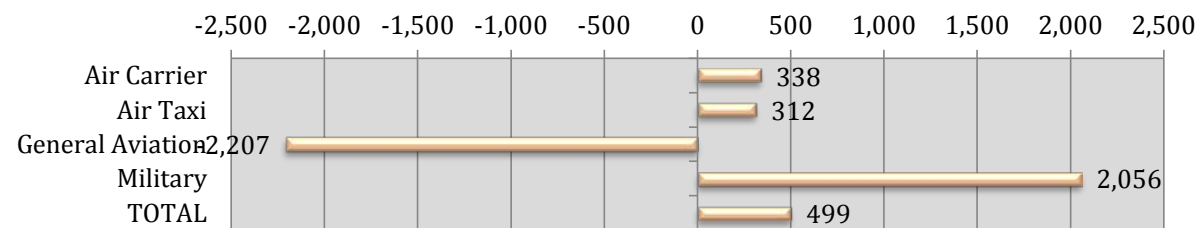
YTD Reported Load Factor YOY Δ



LOAD FACTOR

Alaska	78.4%	80.5%	-	-2.1%
Allegiant	78.7%	91.0%	-	-12.2%
American	81.1%	83.8%	-	-2.7%
Delta	90.0%	91.8%	-	-1.8%
Frontier	84.6%	87.9%	-	-3.2%
United	83.5%	84.3%	-	-0.8%
TOTAL	83.4%	85.4%	-	-1.9%

YTD FAA OPS NET Aircraft Operations YOY Δ



PRIOR PERIOD OPERATIONS

	YTD 2017	YTD 2016	YOY Δ	% Δ
OPERATIONS				
Air Carrier	3,163	2,825	338	12.0%
Air Taxi	2,918	2,606	312	12.0%
General Aviation	12,243	14,450	-2,207	-15.3%
Military	9,207	7,151	2,056	28.8%
TOTAL	27,531	27,032	499	1.8%