

COLORADO SPRINGS
FCS D
FIRE DEPARTMENT

Annual Report
2015



STATISTICAL ABSTRACT VERSION 1.1 26-MAR-2016

CSFD
375 Printers Pkwy Colorado Springs, CO 80910
Tel (719) 385-5950 Fax (719) 385-7388

[https:// csfd.coloradosprings.gov/](https://csfd.coloradosprings.gov/)

Table of Contents

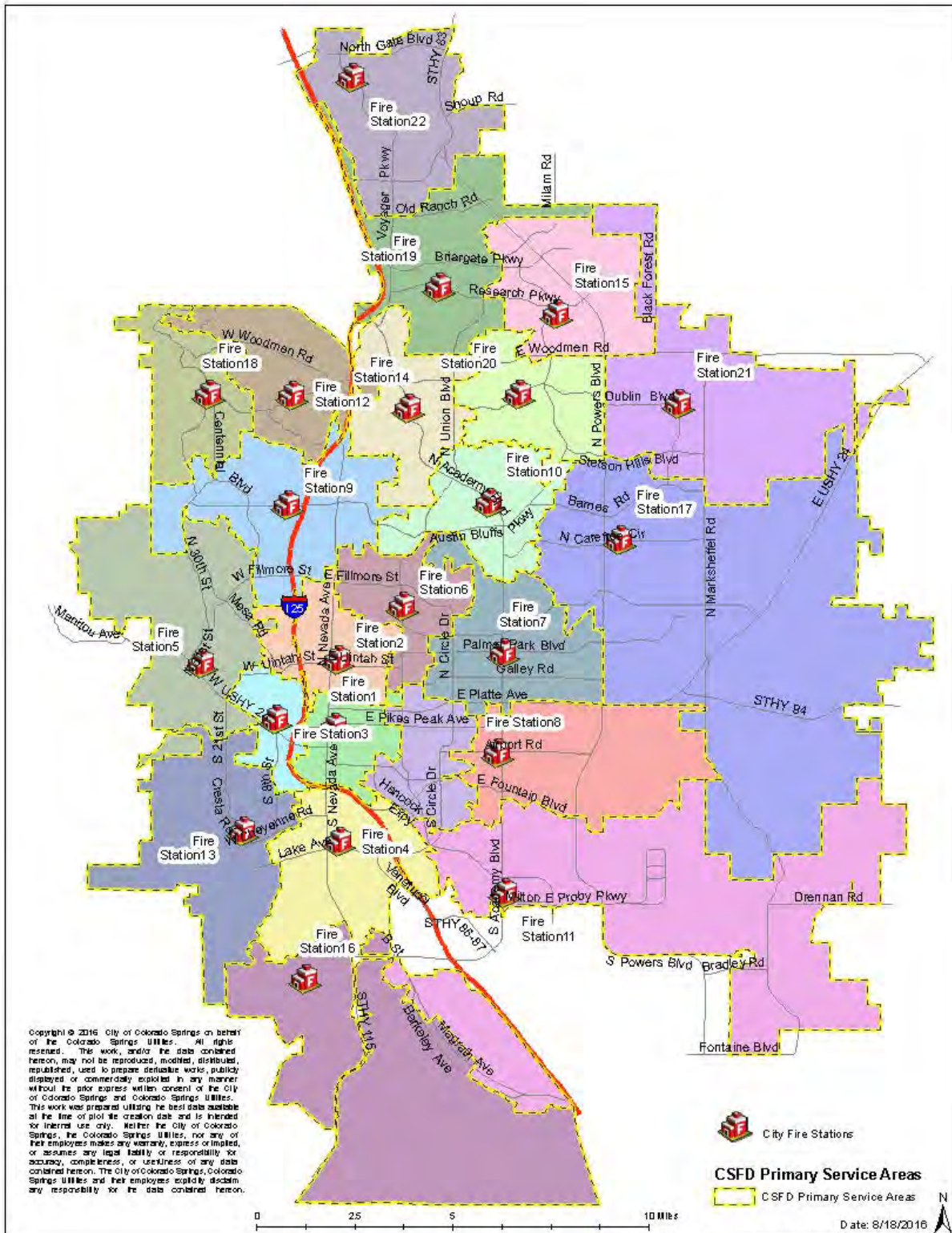
Service Area Maps	1	
Fire Station Locations & First-Due Response Areas _____		1
CSFD Planning Evaluation Zones _____		2
Spatial Distribution of Incidents by FDZ _____		3
Highlights	4	
Standards of Response Coverage _____		4
Incident Trends _____		5
Fire Service Costs _____		5
Finances & Staffing	6	
Colorado Springs Statistics _____		6
CSFD Budget and Per Capita Cost _____		6
CSFD Staffing Trend _____		6
CSFD Staffing per 1,000 Residents _____		6
Fire Loss & Death Trend _____		6
Total Incidents	7	
Incident Overview _____		7
Mutual Aid _____		8
Dispatched vs Situation Found _____		8
Incidents by Pez _____		9
2015 Incidents by PEZ _____		9
Incidents by PEZ: 2015 with the past 5 years _____		9
Incidents by Still District _____		10
2015 Incidents by Still District _____		10
Incidents by Still District: 2015 with the past 5 years _____		10
Incident by FPU _____		10
Standards of Cover _____		11
8 and 12 Minute Standards of Coverage _____		11
Coverage by PEZ _____		11
Company Responses _____		11
2015 Truck Responses by Truck District _____		11
Responses by Still District _____		12
Fire	13	
Incident Overview _____		13
Fires by Still District _____		13
Structure Fires _____		13
Brush Truck Responses by Still District _____		14
Wildland Responses by Still District _____		14
Medical	15	
Summary _____		15
Incident Overview _____		15
Squad Responses _____		15
Primary Assessments _____		16
Hazardous Conditions	17	
Incident Overview _____		17
Electrical Incidents _____		17
Hazmat Incidents _____		17
HazMat Responses by Still District _____		17
Rescue	18	

Table of Contents

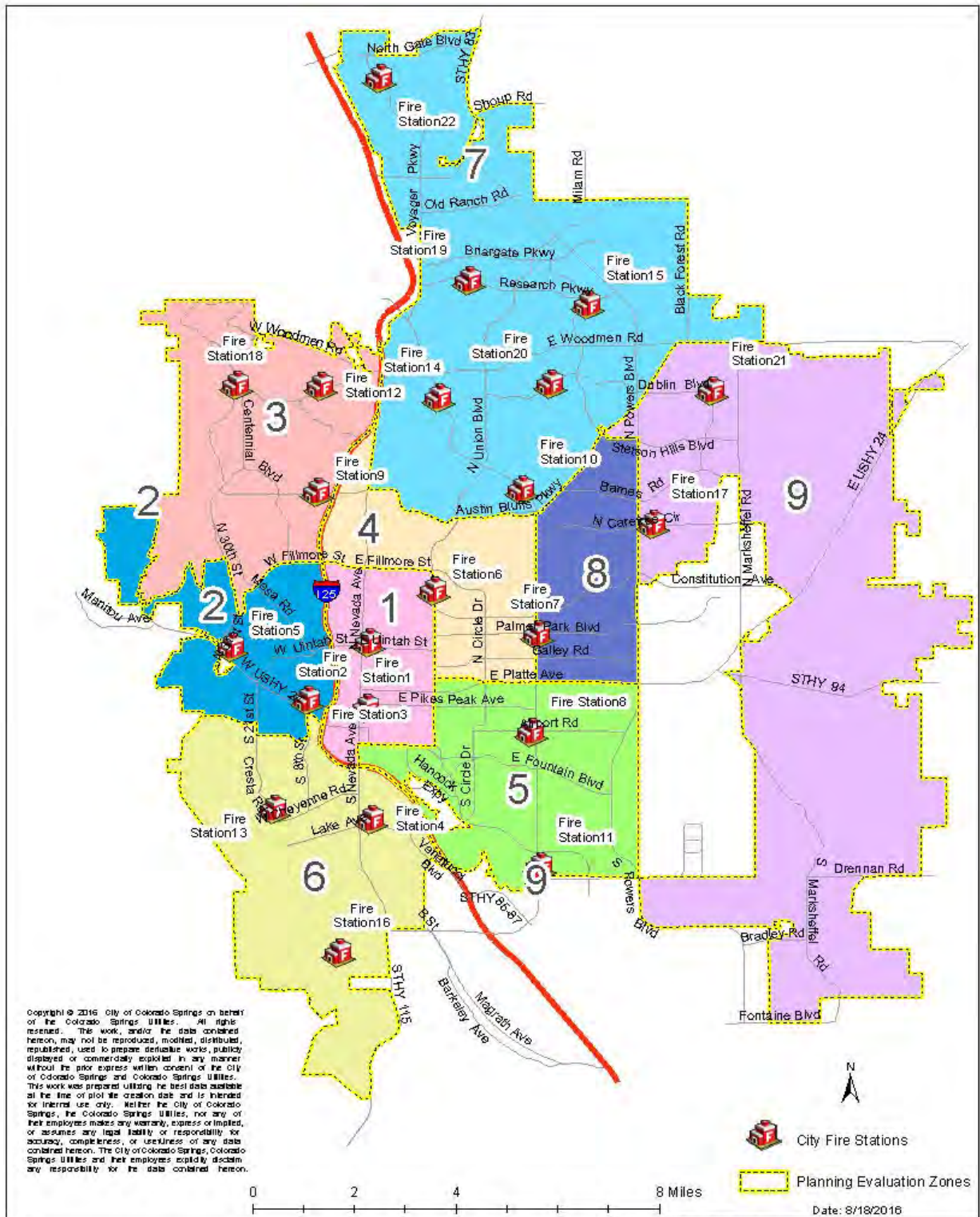
Incident Overview		18
Rescue 17 Responses		18
Over-Pressure / Rupture	19	
Incident Overview		19
False Alarm	20	
Incident Overview		20
Good Intent	21	
Incident Overview		21
Service Call	22	
Incident Overview		22
Severe Weather	23	
Incident Overview		23
Other	24	
Incident Overview		24
Mutual Aid	25	
Mutual Aid Received		25
Mutual Aid Given		26
Appendix	27	
Appendix A: Glossary		27
Colorado Springs Fire Department	28	

Service Area Maps

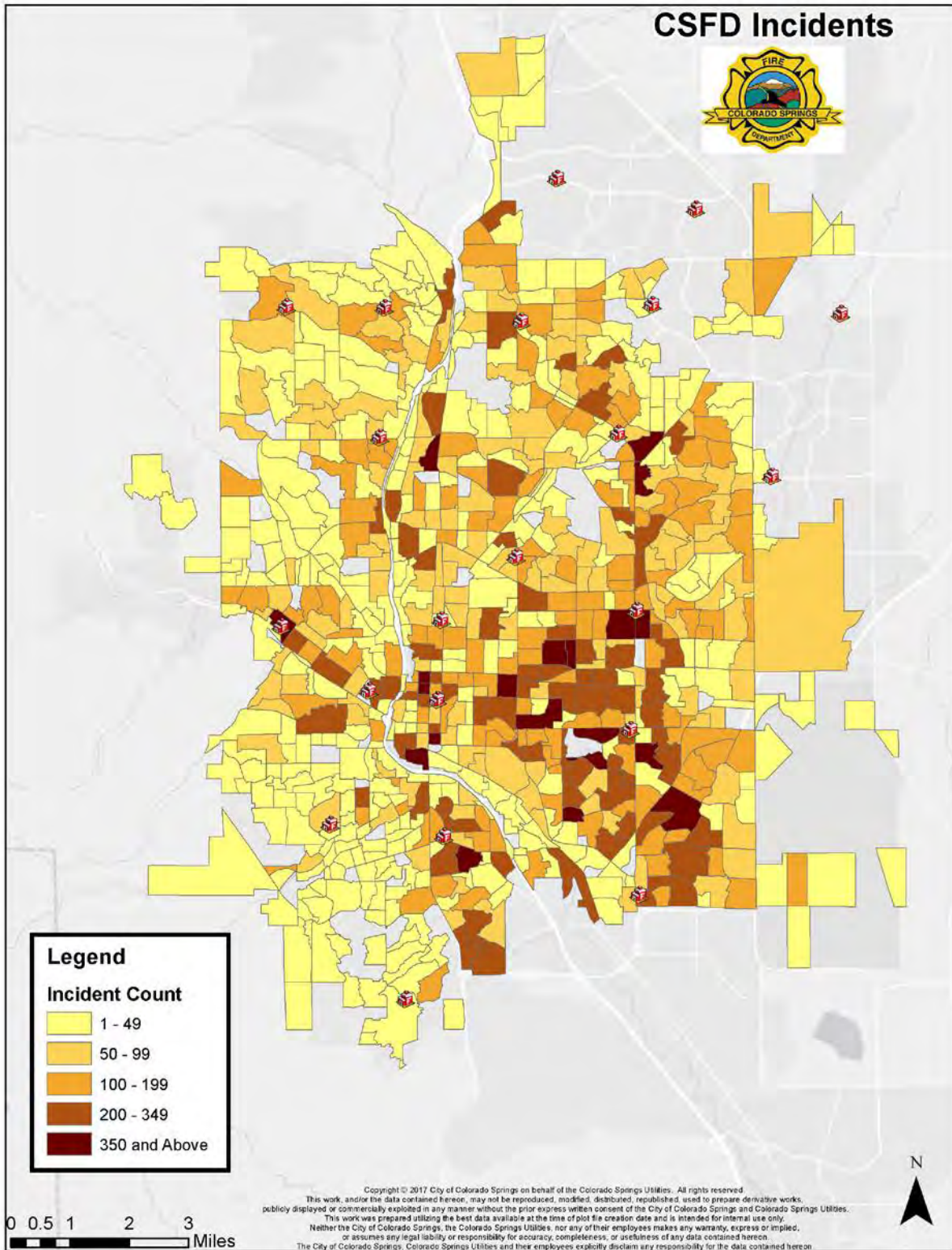
Fire Station Locations & First-Due Response Areas



CSFD Planning Evaluation Zones



Spatial Distribution of Incidents by FDZ



Highlights

- The City experienced two tragic active shooter events in 2015.
 - First, the October 31 Halloween shooting rampage which resulted in three deaths, two citizens and the shooter.
 - Second, the Planned Parenthood invasion and shooting which resulted in three deaths, one UCCS police officer and two citizens.
- CSFD Training Division graduated 17 firefighters.
- Construction of Fire Station 22 at 711 Copper Center Parkway Colorado Springs, CO began with a ground breaking ceremony on July 31, 2015.

Community Assistance Referral & Education Services (CARES)

- CARES connects people in our community with the resources that they need to improve their health and access to healthcare. By helping members connect with primary care providers, medical specialists, food and transportation options, CARES ensures that people have access to the right level of care in the right place and at the right time. During 2015, CARES:
 - Received over 400 referrals
 - Reached over 1100 patients referred since program inception
 - Experienced 52.7% 911 decrease rate
 - Experienced 54.8% ED decrease rate
 - Experienced 61.2% Hospital readmission rate decrease

Community Response Team (CRT)

- CRT is a 9-1-1 mobile mental health crisis response unit staffed by a Fire Department medical provider, a police officer and an AspenPointe social worker. During 2015, CRT:
 - Responded to 2388 incidents, seeing 1516 patients
 - Treated 45% of incidents in place
- Community Outreach: The Division partners with Penrose-St. Francis Health Services, Walgreens, El Paso County Public Health and other area organizations to provide free flu shots and vaccinations to uninsured and underinsured individuals. During the 2015 flu season, these 24 events:
 - Provided influenza vaccinations to 1228 people
 - Provided TDaP vaccinations to 105 people
 - Senior Fall prevention, and proper 9-1-1 usage training was conducted at 13 community settings.

Standards of Response Coverage

- In 2015, 8-minute first company response coverage experienced a slight decrease to 88.2 percent. Decreases in coverage occurred in all but two PEZs 7 & 9. PEZ 7 & 9 experienced the largest relative increase in calls for service within the City (14 & 16 percent respectively). Construction of Station 22 began in August, 2015. This station is located in PEZ 7 and will help address the increased calls for service.
- The 12-minute structure fire response coverage in the city has remained above the 90 percent objective, although structure fire coverage remained below the 90% objective in some Planning Evaluation Zones. Planning Evaluation Zone 7 recorded the least effective coverage in the City at 82.5 percent, partially due to calls for service in the northern most area of the city that will be covered by Station 22.

Incident Trends

- The rate of incidents per 1,000 residents increased from 134.0 in 2014 to 141.5 in 2015. Over the past decade, the total fire service incident rate per unit of population has shown a relatively consistent increase. Thus, the CSFD is receiving more calls for assistance per resident today than it did ten years ago.
- The number of fires experienced by the City has steadily declined over the last 10 years, -4.0%.
- The number of medical incidents serviced by the CSFD has continued to rise; actual medical incidents increased to over 40,800 calls in 2015. The rate of medical incidents increased to 89 per 1,000 residents compared to 83 per 1,000 residents the last 5 years.

Fire Service Costs

- Total expenditures for fire services in Colorado Springs were slightly lower in 2015 than 2014 (\$61.63M vs \$61.97M). When adjusted for population as well as inflation, total fire service costs have been decreasing steadily since 2008 and are the lowest they have been in the last 10 years, excluding 2013 (\$129.10 per person compared to an average of \$131.32 per person¹).
- For 2015, the overall budget decreased slightly. General Fund expenses increased to cover salary and benefit changes, increased overtime costs, and the addition of 2.25 FTE civilian positions; however, there were decreases in expenses from other funding sources. The amount allocated for Capital Improvements Program projects decreased due to the removal of one-time capital project funding. Furthermore, the amount of Public Safety Sales Tax (PSST) funding and the amount of available grant funding decreased in 2015.

¹ Adjusted for inflation to a base year of 2010 dollars.

Finances & Staffing

Colorado Springs Statistics

	2005	2006	2007	2008	2009	2010	2011	2012	2013	2014	2015 ²
Population (1000) ³	383.1	391.8	394.9	401.2	407.7	420.5	426.9	431.7	437.6	444.5	457.9
Fire Stations	20	20	20	20	20	20	20	20	21	21	21

CSFD Budget and Per Capita Cost

	2005	2006	2007	2008	2009	2010	2011	2012	2013	2014	2015 ²
General Fund (\$M)	40.10	40.27	40.28	39.59	40.60	40.60	42.89	42.09	41.91	46.35	47.13
PSST (\$M)	9.57	12.02	10.88	12.86	10.96	11.00	11.42	12.13	15.60	14.62	13.56
Grants (\$M)	0.00	0.00	0.99	3.58	2.83	3.08	2.76	1.80	3.85	1.00	0.94
Total Funding (\$M)	49.67	52.29	52.15	56.04	54.39	54.68	57.07	56.02	61.37	61.97	61.63
Per Capita Fire Cost (\$)	129.65	133.45	132.07	139.67	133.40	130.02	133.69	129.76	140.24	139.43	134.59
Denver-Boulder CPI ⁴	190.90	197.70	202.03	209.90	208.55	212.45	220.29	224.57	230.79	236.56	243.18
Funding (Y2010 \$M)	55.27	56.19	54.84	56.72	55.41	54.68	55.04	53.00	56.49	55.66	53.84
Per Capita Cost (Y2010 \$)	144.29	143.41	138.88	141.37	135.89	130.02	128.93	122.76	129.10	125.22	117.58

CSFD Staffing Trend

	2005	2006	2007	2008	2009	2010	2011	2012	2013	2014	2015 ²
Total Sworn Personnel	428.00	446.00	452.00	452.00	433.00	418.00	416.00	412.00	427.00	427.00	424.00
Sworn Personnel	428.00	446.00	452.00	452.00	433.00	418.00	416.00	412.00	412.00	412.00	424.00
Sworn Grant	0.00	0.00	0.00	0.00	0.00	0.00	0.00	0.00	15.00	15.00	0.00
Total Non-Sworn Personnels ⁵	63.25	62.25	64.25	54.25	48.75	53.25	54.75	47.75	45.25	49.25	51.50
Non-Sworn Personnel	61.25	60.25	62.25	54.25	48.75	48.50	49.75	45.75	43.25	49.25	51.50
Non-Sworn Grant Personnel	2.00	2.00	2.00	0.00	0.00	4.75	5.00	2.00	2.00	0.00	0.00
Total Staffing	491.25	508.25	516.25	506.25	481.75	471.25	470.75	459.75	472.25	476.25	475.50

CSFD Staffing per 1,000 Residents

	2005	2006	2007	2008	2009	2010	2011	2012	2013	2014	2015 ²
Sworn Personnel	1.12	1.14	1.14	1.13	1.06	0.99	0.97	0.95	0.98	0.96	0.93
Non-Sworn Personnel	0.17	0.16	0.16	0.14	0.12	0.13	0.13	0.11	0.10	0.11	0.11
Total Staffing	1.28	1.30	1.31	1.26	1.18	1.12	1.10	1.06	1.08	1.07	1.04

Fire Loss & Death Trend

	2005	2006	2007	2008	2009	2010	2011	2012	2013	2014	2015	10-yr Avg
Fire Loss (\$M) ⁶	3.89	6.34	11.30	9.21	12.67	8.30	5.90	117.32	10.84	7.61	4.69	19.42
Per Capita Loss (\$)	10.15	16.19	28.62	22.95	31.08	19.73	13.81	271.75	24.76	17.12	10.24	45.63
Civilian Fire Deaths	2.00	3.00	2.00	3.00	4.00	0.00	2.00	2.00	2.00	1.00	2.00	2.10
Deaths/100,000 Pop	0.52	0.77	0.51	0.75	0.98	0.00	0.47	0.46	0.46	0.22	0.44	0.51
Civilian Fire Injuries	32.00	38.00	39.00	21.00	31.00	51.00	49.00	34.00	31.00	27.00	19.00	34.20

² Items in Italics are estimates or quantities derived from estimates.

³ 2015 Budget (Oct 6, 2014) Colorado Springs at Glance, Community Profile, and GFOS Award.

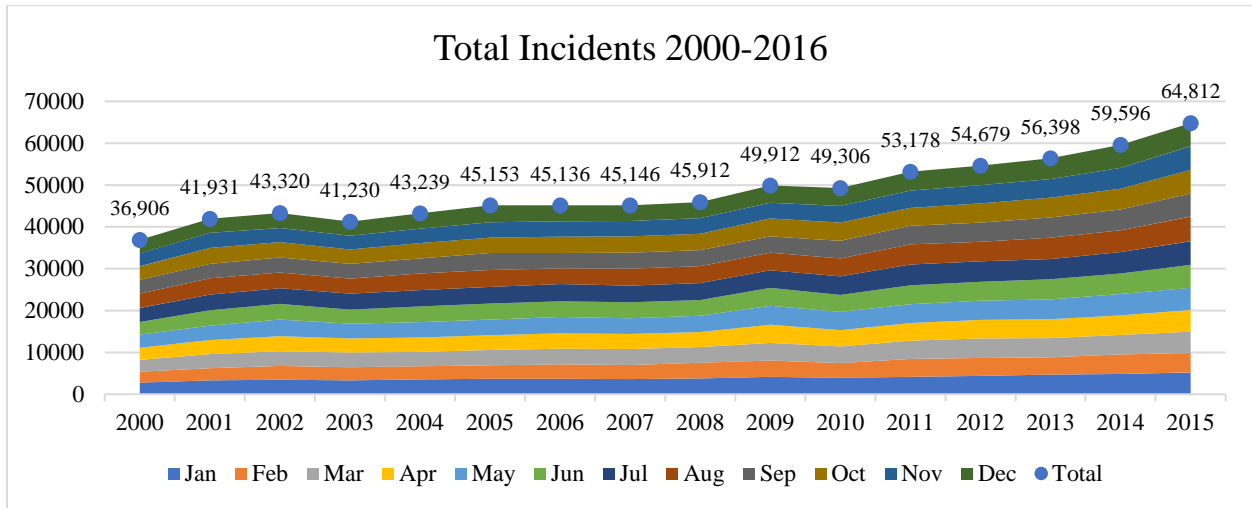
⁴ Colorado Department of Local Affairs (Actuals and Projections).

⁵ In 2012, OEM began reporting to the Chief of Staff and is not included in staffing numbers.

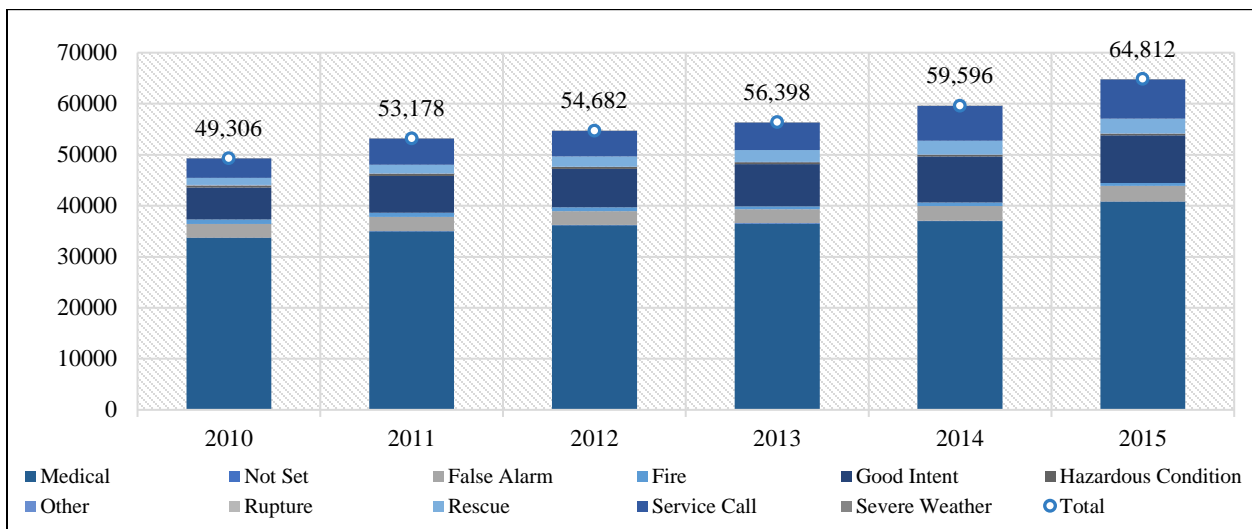
⁶ Fire loss in 2012 includes property damage associated with the Waldo Canyon Fire which was \$109.7 million of the total.

Total Incidents

Incident Overview



Year	False Alarm	Fire	Good Intent	Hazardous Conditions	Medical	Other	Rupture	Rescue	Service Calls	Severe Weather	Not Set	Total
2010	2695	838	6315	379	33716	45	33	1385	3830	34	36	49306
2011	2739	800	7230	414	35012	63	29	1688	5121	25	57	53178
2012	2713	711	7549	381	36202	33	35	1988	5010	15	45	54682
2013	2685	599	8291	339	36507	49	39	2338	5390	63	98	56398
2014	2918	643	9035	316	36981	46	31	2713	6821	24	68	59596
2015	3085	556	9320	315	40821	32	27	2873	7729	43	11	64812



Mutual Aid

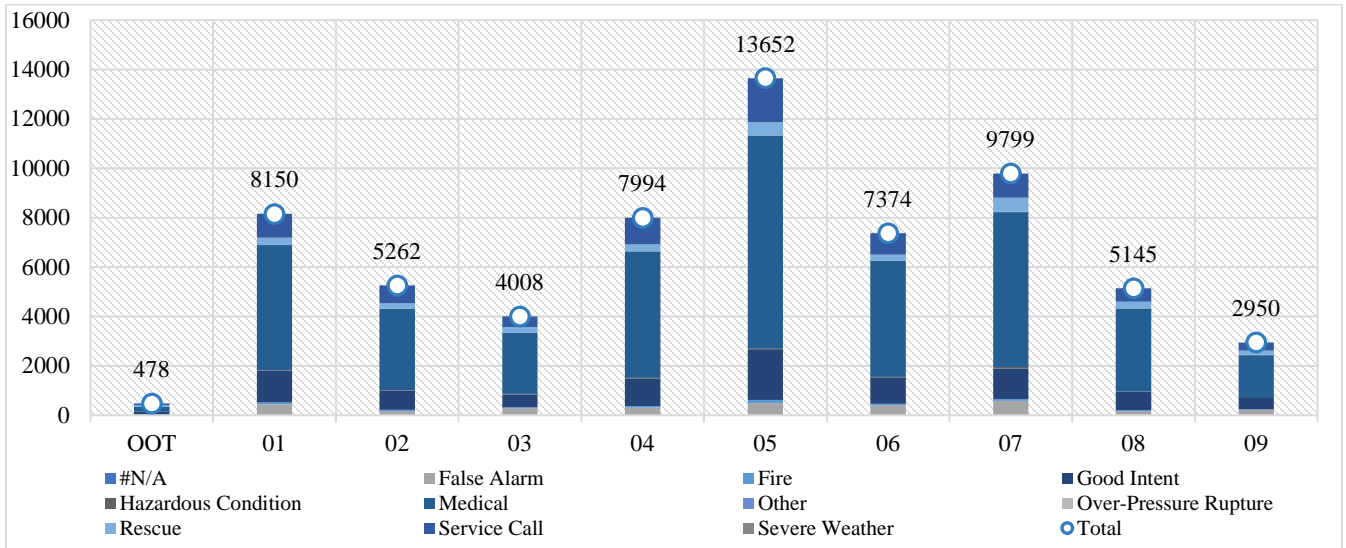
Year	Aid Type	False Alarm	Good Intent	Hazardous Condition	Medical	Other	Rupture	Rescue	Service Call	Severe Weather	Total
2010	RECEIVED	2	2	2	4			2	2		14
2010	GIVEN	24	19	27	3	156	2	3	29		263
2011	RECEIVED	3	3	5		8			2		21
2011	GIVEN	5	17	16	8	173	8	7	38		272
2012	RECEIVED	1	3	5		5					14
2012	GIVEN	9	11	22	1	212	2	6	35	1	299
2013	RECEIVED	1	2	11		8					22
2013	GIVEN	15	11	21	4	132	2	8	24	1	218
2014	RECEIVED	3		8	1	20	1	3	3		39
2014	GIVEN	9	9	27	1	171	3	19	34		274
2015	RECEIVED	5	2	9		27		3	4		50
2015	GIVEN	13	9	63		184		28	37	2	336

Dispatched vs Situation Found

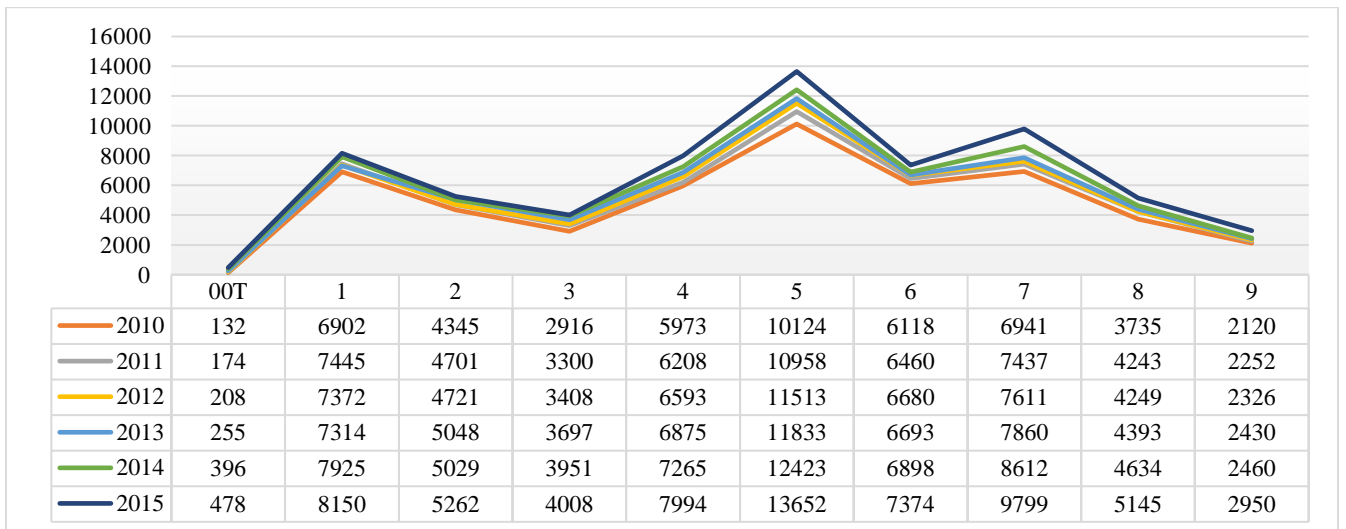
Situation Found	Dispatch Code								
	Fire	Good Intent	Hazardous Condition	Medical	Other	Rescue	Service Call	Severe Weather	
2015	1989	3828	688	54205	507	333	3216	46	
Sit Found Not Set	1			8		1	1		
False Alarm	92	2510		11	397	20	45	5	
Fire	527	8		3	5		13		
Good Intent	935	870		298	6084	96	82	941	14
Hazardous Condition	31	76		170	15			22	1
Medical	35	33		10	40279	110	48	306	
Other	5	2		5	11	1		8	
Over-Pressure	10	3		10	2		2		
Rescue	14			32	2540	35	140	112	
Service Call	327	325		146	4864	245	55	1761	6
Severe Weather	12	1		3			2	5	20
2014	2226	3665	715	49100	371	274	3215	29	
Sit Found Not Set	2	1	1	59	1		4		
False Alarm	97	2400		8	359	15	4	33	2
Fire	609	12		3	4			15	
Good Intent	1083	810		284	5689	61	83	1016	8
Hazardous Condition	48	72		149	25	4		18	
Medical	24	29		13	36518	87	45	265	
Other	15			5	15			11	
Over-Pressure	12	1		16	1			1	
Rescue	11			44	2426	33	96	103	
Service Call	321	339		189	4004	170	45	1746	7
Severe Weather	4	1		3			1	3	12
2013	2167	3447	736	46330	280	307	3096	34	
Sit Found Not Set	3	6	1	72			1	15	
False Alarm	83	2266		6	284	13	2	28	3
Fire	560	4		3	6	1		24	1
Good Intent	1113	757		289	4988	57	86	987	13
Hazardous Condition	45	53		188	22	4		24	3
Medical	33	25		22	36059	87	39	241	1
Other	6	5		10	18	1		8	1
Over-Pressure	11	5		10	3	1		9	
Rescue	14	2		43	2020	16	117	126	
Service Call	292	323		162	2858	99	58	1595	3
Severe Weather	7	1		2			5	39	9

Incidents by Pez

2015 Incidents by PEZ

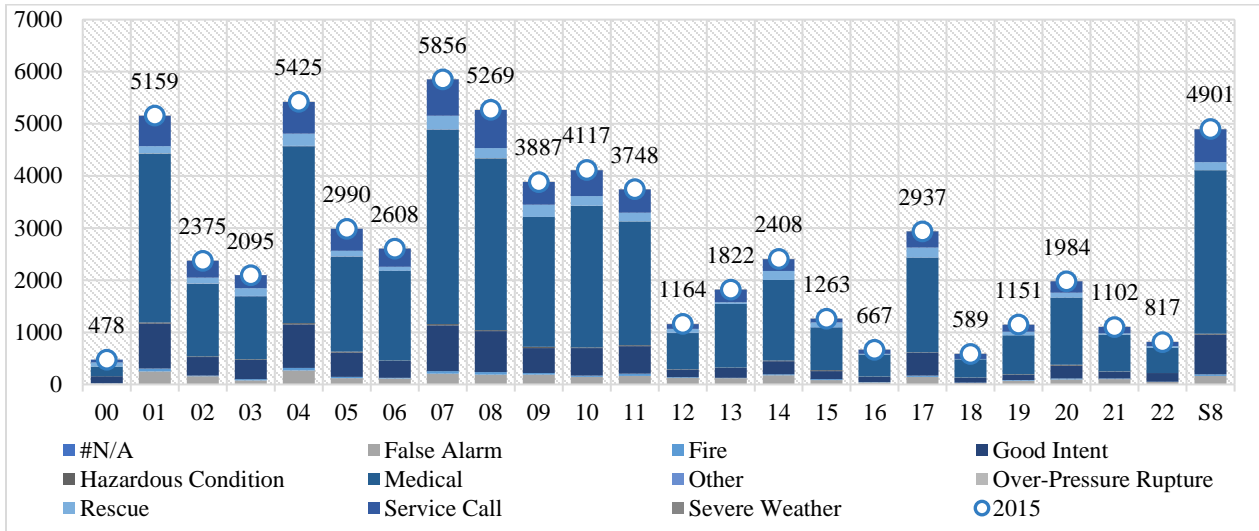


Incidents by PEZ: 2015 with the past 5 years

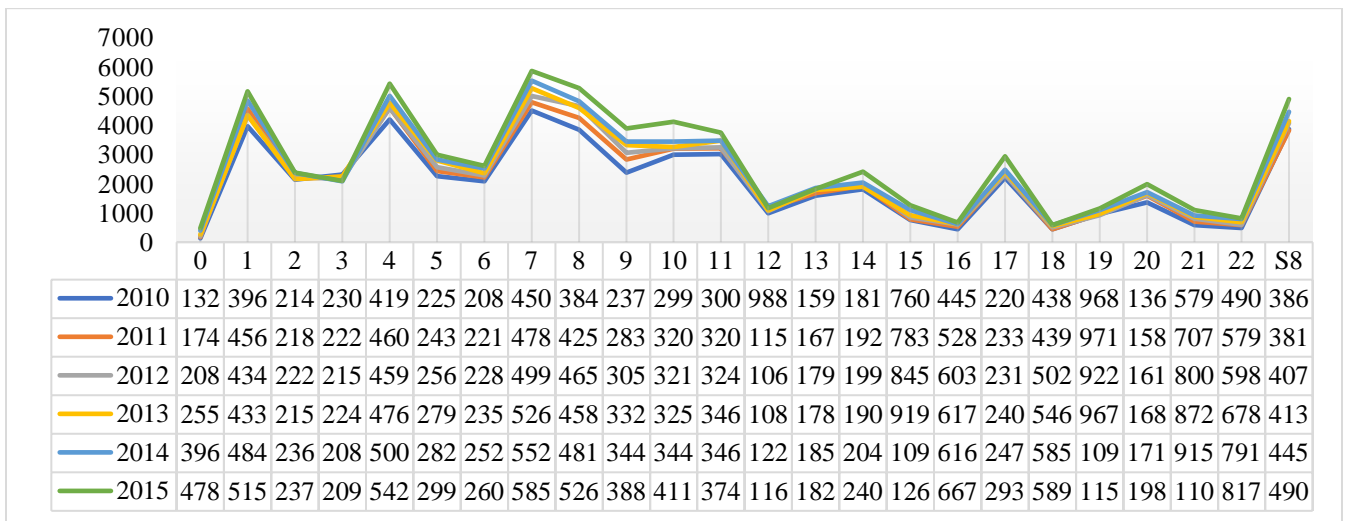


Incidents by Still District

2015 Incidents by Still District



Incidents by Still District: 2015 with the past 5 years

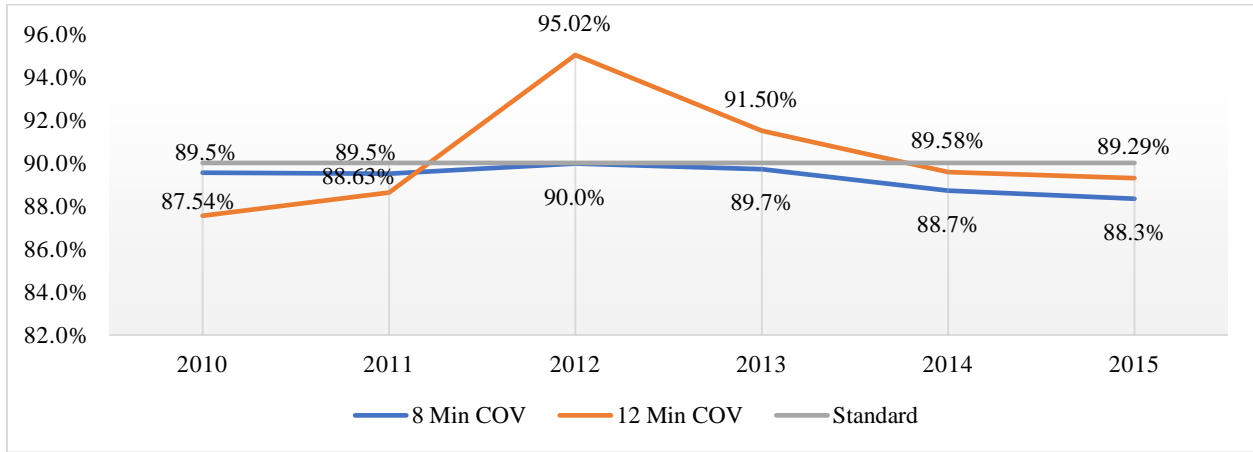


Incident by FPU

Type	False Alarm	Fire	Good Intent	Hazardous Condition	Medical	Other	Rupture	Rescue	Service Call	Severe Weather	Not Aval	Total
2015	3067	551	9247	315	40605	32	27	2842	7686	41	11	64424
Commercial	730	292	3577	142	10356	20	5	2514	1608	9		19253
Industrial	41	6	34	4	237	1		2	19			344
Institution	523	9	601	8	5328	1	2	16	615			7103
Multi Family	336	65	1374	24	7007	1	8	18	1622	1		10456
Other Res	209	8	219		992	1	2	10	143	1		1585
Single Family	998	142	2627	117	14057	8	10	55	3084	20		21118
#N/A	230	29	815	20	2628			227	595	10	11	4565

Standards of Cover

8 and 12 Minute Standards of Coverage



Year	8 Min COV	12 Min COV
2010	89.5%	87.5%
2011	89.5%	88.6%
2012	90.0%	95.0%
2013	89.7%	91.5%
2014	88.7%	89.6%
2015	88.3%	89.3%

Coverage by PEZ

PEZ	8 Min COV	12 Min COV
City	88.34%	89.29%
01	95.45%	97.14%
02	87.89%	92.00%
03	83.63%	80.00%
04	90.76%	92.86%
05	88.09%	88.42%
06	88.77%	90.48%
07	84.21%	80.70%
08	89.67%	95.45%
09	83.26%	84.62%

Company Responses

2015 Truck Responses by Truck District

Company	OOT	1	4	8	9	10	17	19	Total
HR17	46	64	42	167	53	139	5	663	89
T01	2	2024	217	194	118	7	4	8	3
T04	12	205	1859	226	19		8		1
T08	12	148	63	2541	2	47		46	2
T09	4	143	22	27	1510	44		6	57
T10	1	37	3	171	104	1393		154	42
T19	57	9	7	6	67	73		26	824
Total	134	2630	2213	3332	1873	1703	17	903	1018

Total Incidents

Responses by Still District

CMP	OOT	1	2	3	4	5	6	7	8	9	10	11	12	13	14	15	16	17	18	19	20	21	22	S8	Total		
E01		3	3045	246	212	348	77	22	19	21	31		20	3	30	1		1				1			377	4457	
E02			331	1462	63	20	58	309	11	6	152	4	6	1	5				1					1	51	2481	
E03		1	303	58	1387	133	442	4	4	11	9	1	11		200			1	1						22	2588	
E04		17	174	7	64	3396	5		2	26	2		108		120	1		109							105	4136	
E05		2	11	18	211	19	2153	3	4		30	1	2	3	134	5				3					3	2602	
E06			21	236		1	3	1802	203	9	85	154	1	3	1	13					1	1				92	2626
E07		8	7	5		2		90	2173	283		152	46		1	1			68				1		127	2964	
E08		5	33	12	2	21	1	5	418	2947	1	12	460	1		2		1	10	1			2		891	4825	
E09		3	11	191	8	6	112	124	4	7	2410	67	4	81	10	17	4		11	12	2	3	1	4	6	3098	
E10		4	3	8	2	3		63	126	46	44	2453	8		2	285	5	1	162		3	63	9	2	18	3310	
E11		12	2		1	90		2	14	288	1	1	2267		1			12							230	2921	
E12		14	6	5		5	1	3	2	1	143		1	915		105	1		1	31	3	1	1	18	2	1259	
E13		3	15	3	26	260	113		2		5		1	2	1323	5				2						4	1764
E14		15				1	3	5	1	57	95		86		1419	4		2	1	44	137	2	43			1915	
E15			2		1			1	1	2	4		2		6	1010			4		62	120	49	31	1	1296	
E16		25	5		2	113	1		2	1			12		19			509				1			4	694	
E17		104		2			2	114	20	1	88	11			3	7		1940		3	39	74	2	2	2	2412	
E18		3	1	2		1	3	2	1		106			133		1	1			515				1		770	
E19		169	2	2		4	2	2	10	4	10	13	4	26		308	142		16	3	769	67	6	606	6	2171	
E20				1		1		12	1		4	75		5		119	79		16	1	32	1386	31	6	1	1770	
E21		21									15	1				28		187		3	105	880	5			1245	
H06			8	8	3	8	7	27	18	9	8	9	4		2	4	3		1		3	2	1	2	7	134	
H14		2	20	18	11	28	30	12	31	24	31	17	19	7	3	56	14	4	22	3	10	15	9	5	20	411	
HR17		46	21	13	8	29	21	10	112	62	25	87	31	8	10	16	52	3	553	4	14	40	70	7	26	1268	
S07		2	17	21	2	3	2	122	2961	163	8	110	30	3	2	3	2		49		2	3	1	2	116	3624	
S08		2	143	9	3	40	10	31	271	527	8	3	143		3	2			3			1	1	1	2726	3927	
S11			1	2		23	1		11	55	1	3	744		1			2		1				1	51	897	
T01		2	1404	214	136	178	108	56	44	50	68	2	26	5	50		1	7	4	5		1	1	1	214	2577	
T04		12	126	7	42	1678	19	6	6	62	12		115	2	92			59		1	1				90	2330	
T08		7	44	13	1	47		31	360	1442	1	23	334		2			3	28		1		2	1	521	2861	
T09		4	16	128	22	17	84	80	8	5	1149	43	3	127	8	26	2	1	3	31	13	5	3	20	15	1813	
T10		1	4	8	1	3	1	83	166	48	33	1116	6	12		168	15		123	1	10	60	17	3	26	1905	
T19		55	3			4	3	2	1		16	18	2	44	2	173	103	2	8	6	314	66	19	222	6	1069	
2015 Total	542	5779	2699	2208	6481	3258	2908	7105	6119	4453	4566	4420	1469	2018	2740	1475	715	3213	621	1290	2117	1180	984	5760	74120		

Fire

Incident Overview

Year	Explosion	Grass Fire	Other Fire	Outside Fire	Spill w/Fire	Structure Fire	Trash Fire	Vehicle Fire	Total
2010	1	209	4	94	3	243	130	154	838
2011	4	205	4	110	4	228	124	121	800
2012	2	159	5	97	6	211	107	124	711
2013	4	130	4	87	3	190	72	109	599
2014	2	126	3	86	5	188	123	110	643
2015	4	89	4	80	4	162	101	112	556

Fires by Still District

Station	Explosion	Grass Fire	Outside Fire	Spill w/Fire	Structure Fire	Trash Fire	Vehicle Fire	Total
NA		3				2		2
01	1	9	1	8		10	20	4
02		2	1	4		4	1	4
03		7		6		3	5	7
04		12		6	1	16	7	10
05		4	2	5		9	3	3
06				5		6	1	4
07		5		7	2	21	4	12
08	1	7		2		16	8	11
09		3		2		12	8	7
10		3		1		6	7	8
11	1	5		6		13	9	7
12				1		6	2	1
13		1		2		2	2	1
14		6		3		3	3	5
15		6		4		3	1	3
16		2				1	2	
17		5		7		7		7
18				1			1	3
19		1			1	2	2	1
20		2		3		4	6	3
21		3		2		4	3	
22				1		3		1
S8	1	3		4		9	6	8

Structure Fires

Exposures

Property Use	2010	2011	2012	2013	2014	2015
Not Available	4	8	4	9	11	10
Commercial	31	34	37	30	24	25
Industrial	1	2	1	4	2	2
Institution	7	1	1	2	3	
Multi Family	65	61	54	52	42	43
Other Residential	4	7	3	2	4	5
Single Family	137	513	95	109	81	87
Grand Total	249	242	613	194	195	166

Brush Truck Responses by Still District

	OOT	01	02	03	04	05	06	07	08	09	10	11	12	13	14	15	16	17	18	19	20	21	22	S8	Total	
Total	14	11	9	11	46	65	20	62	35	26	23	66	22	44	33	25	7	32	11	15	20	24	8	12	641	
B5		1		8	3	40		2						4		1		1	1							61
B6				4	1		1	16	5	2	1	1					1		1				2		1	36
B7		1						1	24	8		3	3						2						2	44
B9			1	1	1	1	1	1		12	1	1		1	2				3							27
B10			2							3		13	1		1							1				21
B11		3				2				6			50	1		1									4	67
B12		1	2			1			3	1	2		2	16				1	2				1			32
B13			1	1		29	19		3		1		1	1	36	1			1	1						95
B14							1	1	1	1	4	1		2	1	25	1					1		2		40
B15						1			3	1			1			13		1		1	1		1	1	1	24
B16		6	2		1	6	2	1	8	5	2		5		1		1	7	2		1		2		4	56
B17		1				1			2	3		1							13				1			22
B18		1		1			1		3	2	1			2					1	7				2		21
B19		1	1	1			1		5	3	2			1	3					12			3	5		39
B20						1			1			3			3	3					1	12				24
B21			1	1		1			1			2				1		6				5	13			32

Wildland Responses by Still District

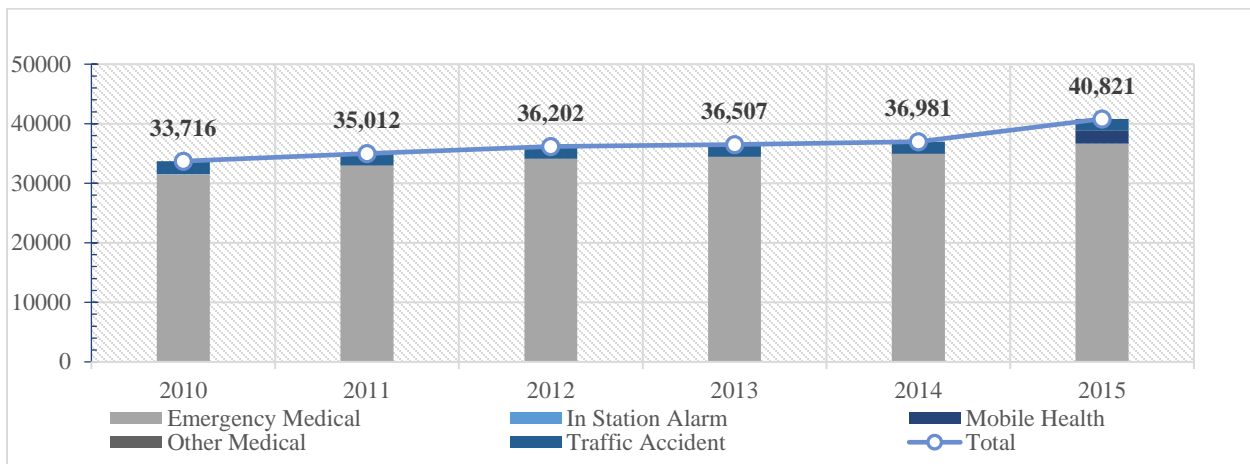
	OOT	01	02	03	04	05	06	07	08	09	10	11	12	13	14	15	16	17	18	19	20	21	22	S8	Total	
Total	5	1		3	25	4			1	3				9				1	1					1	55	
W4		4	1		3	25	2			1				8											1	45
W9		1				2			1	2				1				1	1						1	10

Medical

Summary

Incident Overview

Year	Emergency Medical	In Station Alarm	Mobile Health	Other Medical	Traffic Accident	Total Medic Incidents	Patients
2010	31524	24		35	2133	33716	32112
2011	32957	18		15	2022	35012	32716
2012	34067	29		20	2086	36202	32998
2013	34450	10		12	2035	36507	33111
2014	34928	11	121	9	1912	36981	33255
2015	36634	40	2175	12	1960	40821	37151



Medical Action Taken	2010	2011	2012	2013	2014	2015
OTHER	35	4	7	4	20	3
ALS	11334	11209	11191	11188	11491	12780
BLS	20739	21503	21800	21919	21744	24368
TRIAGE	4					
Grand Total	32112	32716	32998	33111	33255	37151

Squad Responses

By Still District

	Cmp	OOT	01	02	03	04	05	06	07	08	09	10	11	12	13	14	15	16	17	18	19	20	21	22	S8	Total
S07	2	17	21	2	3	2	122	2961	163	8	110	30	3	2	3	2	49	2	3	1	2	116	3624			
S08	2	143	9	3	40	10	31	271	527	8	3	143			3	2				1	1	1	2726	3927		
S11		1	2		23	1		11	55	1	3	744		1			2		1				1	51	897	

Primary Assessments

2015 Total	37151
Traumatic Injury	8059
Exacerbation Of Pre-Existing Medical Condition	6839
General Illness	3947
Medical Evaluation Only / No Obvious Illness Or Injury	1980
Altered Loc	1591
Abdominal Pain	1573
Chest Pain / Cardiac Symptom	1514
Mobile Mental Health Evaluation (Mmh Team Only)	1417
Psych / Behavioral Disorder	1394
Seizure	1373
Respiratory Distress	1265
Syncope / Fainting	1190
Poisoning	1168
Flu Like Symptoms	684
Diabetic Symptom	493
Stroke / Cva / Tia	471
Hemorrhaging / Bleeding	388
Cardiac Arrest (Medical)	349
Obvious Death / Doa	333
Allergic Reaction	254
Cardiac Dysrhythmia	230
Pregnancy Complications	148
Airway Obstruction	107
Ob Delivery (For Maternal Only)	59
Respiratory Arrest	44
Hypothermia / Environmental	37
Stings / Venomous Bites	37
Hypovolemia / Shock	30
Inhalation Injury (Toxic Gas)	30
Electrocution	26
Burns	24
Cardiac Arrest (Trauma)	21
Do Not Resuscitate	21
Birth (For Neonate Only)	20
Sexual Assault	17
Hyperthermia / Environmental	13
#N/A	5

Hazardous Conditions

Incident Overview

Situation Found Type	2010	2011	2012	2013	2014	2015
Aircraft Incident	2	1				
Chemical Incident	5	8	14	9	6	4
CO Alarm	53	67	50	64	78	79
Drug Lab	2	2	3	1		
Electrical Incident	123	132	104	102	85	68
Explosive Removal	2	5	6	3		1
Fire Setter	1	2	1	2	4	
Fire-Play By Juvenile	2	1		1	1	2
Hazmat Incident	178	177	185	148	134	150
Rail Incident						2
Standby	11	19	18	9	8	9

Electrical Incidents

Situation Found	2010	2011	2012	2013	2014	2015
Hazc-Arching, Shorted Electrical Equipment	84	73	77	69	48	88
Hazc-Power Line Down	39	31	25	16	20	21
Total	123	104	102	85	68	109

Hazmat Incidents

Situation Found	2010	2011	2012	2013	2014	2015
Hmt-Fuel Spill (Gasoline / Diesel)	60	50	49	45	38	46
Hmt-Spill, Leak (Gases Only)	64	79	83	73	61	82
Hmt-Spill, Leak (Liquids Only)	54	48	53	30	35	22
Total	178	177	185	148	134	150

HazMat Responses by Still District

Company	OOT	01	02	03	04	05	06	07	08	09	10	11	12	13	14	15	16	17	18	19	20	21	22	S8	Total
H14	2	20	18	11	28	30	12	31	24	31	17	19	7	3	56	14	4	22	3	10	15	9	5	20	411
H6		8	8	3	8	7	27	18	9	8	9	4		2	4	3		1		3	2	1	2	7	134

Rescue

Incident Overview

Situation Found	2010	2011	2012	2013	2014	2015
Entanglement	8	7	7	1	9	5
Extrication	15	13	8	12	14	14
Lock-In	77	92	89	81	71	72
Rescue	28	16	24	25	25	37
Rescue Collapse	2	1		1	1	4
Rescue High Angle	13	16	10	10	17	17
Rescue Ice	4	10	6	12	5	7
Rescue Other	1	2	3	6	3	6
Rescue Water	5	4	10	17	3	13
Traffic Accident ⁷	1232	1527	1831	2173	2565	2698
Grand Total	1385	1688	1988	2338	2713	2873

Traffic Accident

Situation Found	2010	2011	2012	2013	2014	2015
Med-Traffic Accident With Injury	2133	2022	2086	2035	1912	1960
Service Call-Traffic Accident Non-Injury	1232	1527	1831	2173	2565	2698
Grand Total	3365	3549	3917	4208	4477	4658

Rescue 17 Responses

Still District

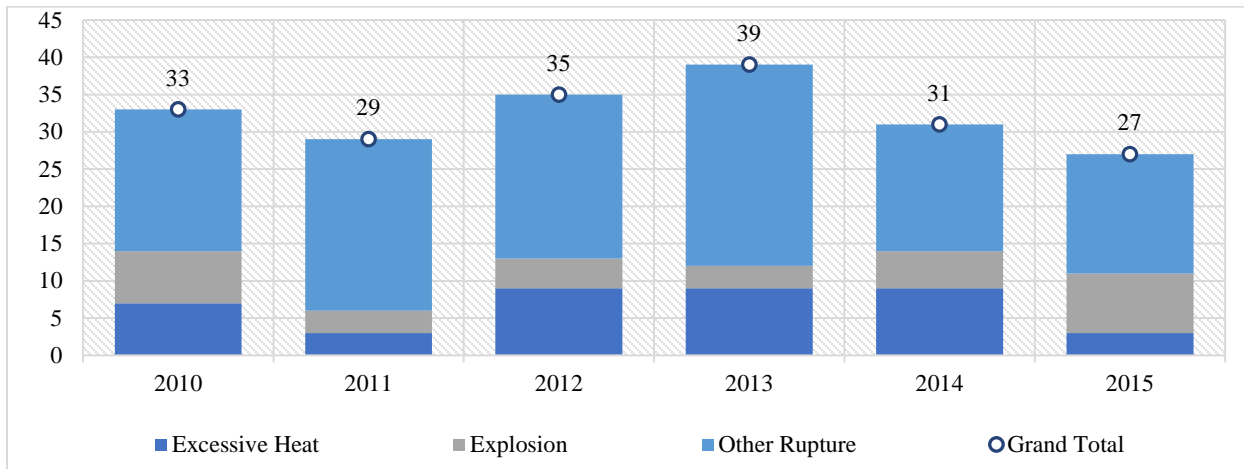
HR17	OOT	01	02	03	04	05	06	07	08	09	10	11	12	13	14	15	16	17	18	19	20	21	22	S8	Total
2015	46	21	13	8	29	21	10	112	62	25	87	31	8	10	16	52	3	553	4	14	40	70	7	26	1268

⁷ Traffic Accidents without Injury were moved to the Rescue Category from Service Calls so that incidents were more aligned with NFIRS. This caused a noticeable reduction in Service Calls and increase in Rescues.

Over-Pressure / Rupture

Incident Overview

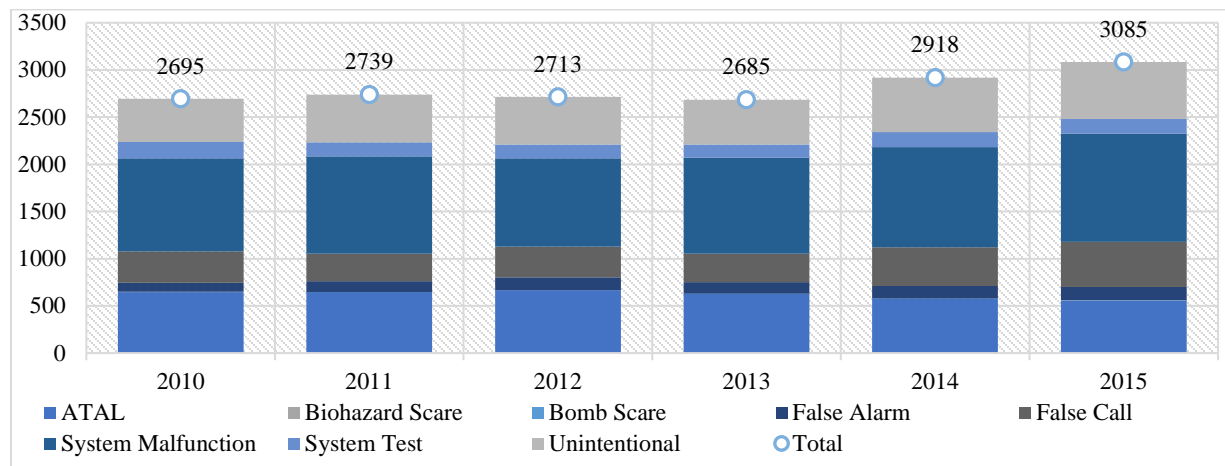
Situation Found	2010	2011	2012	2013	2014	2015
Excessive Heat	7	3	9	9	9	3
Hazz-Excessive Heat	7	3	9	9	9	3
Explosion	7	3	4	3	5	8
Fire-Explosion, No After-Fire	7	3	4	3	5	8
Other Rupture	19	23	22	27	17	16
Hazz-Air, Gas Rupture (Gases Only)	18	17	16	22	16	11
Hazz-Over-Pressure Rupture Unclassified	1	3	3	2	1	3
Hazz-Steam Rupture		1				1
Over-Pressure Rupture Unclassified		2	3	3		1
Grand Total	33	29	35	39	31	27



False Alarm

Incident Overview

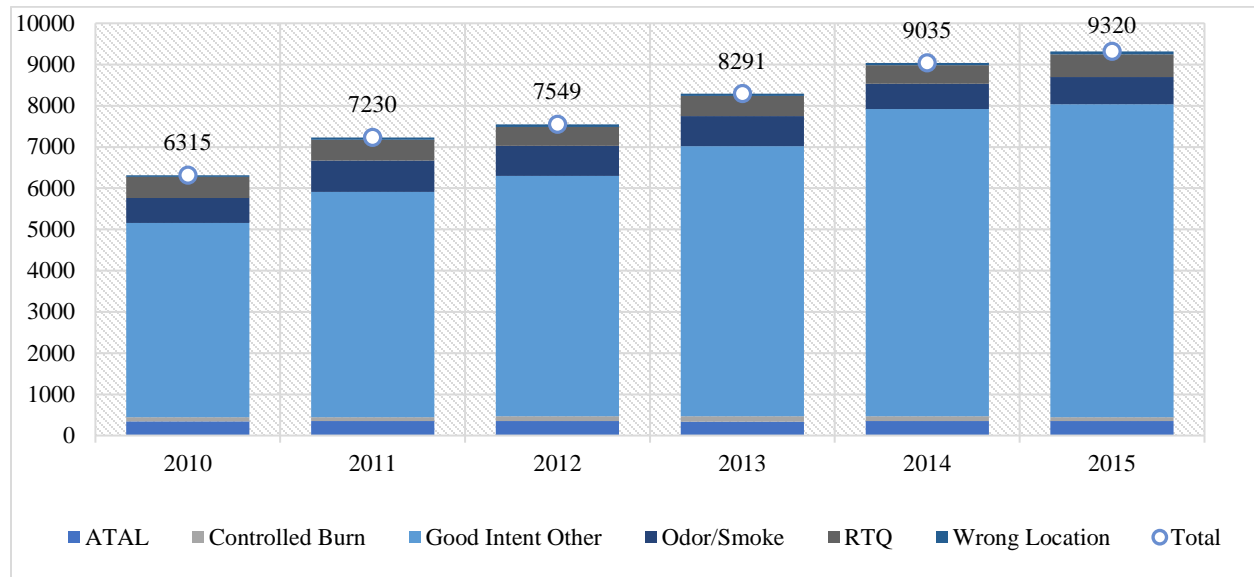
Situation Found	2010	2011	2012	2013	2014	2015
ATAL	648	645	666	628	579	557
ATAL-Detector Operated Due To Particle Contamination	402	353	345	310	339	358
Service Call-Automatic Fire Alarm Sounding (No Fire)	246	292	321	318	240	199
Biohazard Scare	1					1
False-Biohazard Scare	1					1
Bomb Scare		1		1	1	2
False-Bomb Scare, No Bomb		1		1	1	2
False Alarm	95	115	135	124	132	141
ATAL-System Vandalized	1	1	2	3	1	1
False-Residential Smoke Detector Sounding (Malfunction)	94	114	133	121	131	140
False Call	333	291	328	299	410	479
ATAL-Malicious, Mischievous False Call	49	53	28	42	67	60
False-Call Not Classified Above	262	208	277	210	291	371
False-Malicious Mischievous False Call	22	30	23	47	52	48
System Malfunction	987	1031	935	1018	1059	1143
ATAL-System Malfunction - Discharged (Automatic)	58	63	53	59	60	67
ATAL-System Malfunction - Lightning / Power Surge	50	44	37	24	27	49
ATAL-System Malfunction - Unknown Cause	614	594	540	602	607	630
False-Automatic Co Alarm Sounding (Malfunction)	182	228	220	236	234	267
System Malfunction	83	102	85	97	131	130
System Test	173	149	144	140	159	159
ATAL-Alarm Testing - Failed To Notify Alarm Co.	152	130	135	125	144	142
ATAL-System Flow Testing - Failed To Notify Alarm Co.	21	19	9	15	15	17
Unintentional	458	507	505	475	578	603
ATAL-Accidental Pull Station Activation	207	206	222	194	212	245
ATAL-Accidental System Discharge (By Occupant)	129	164	128	120	160	151
Unintentional	122	137	155	161	206	207
Total	2695	2739	2713	2685	2918	3085



Good Intent

Incident Overview

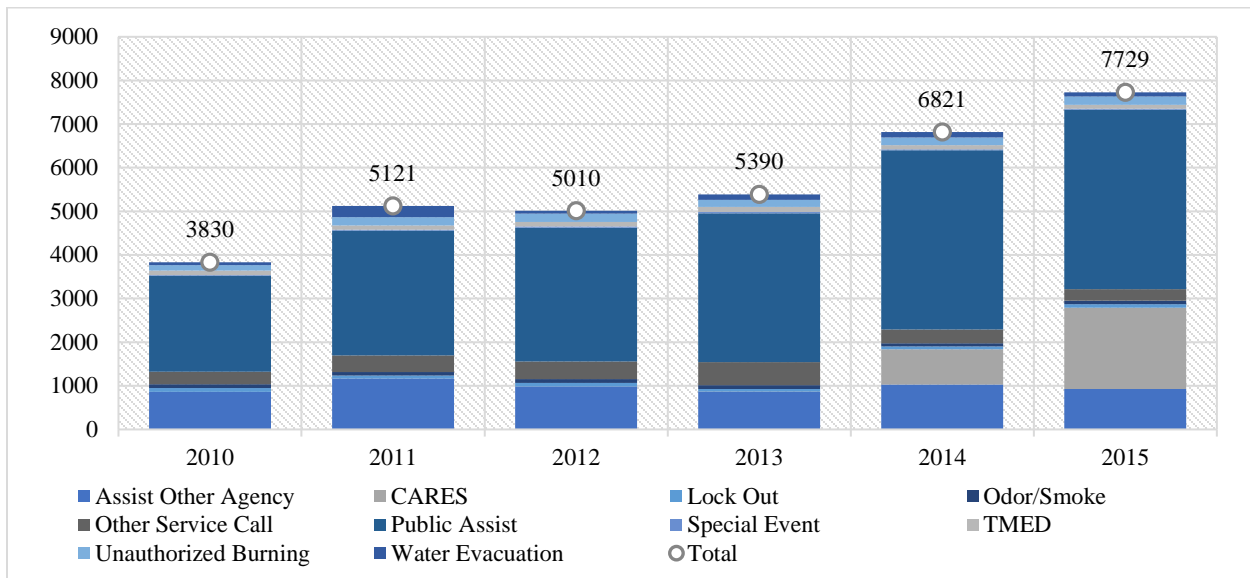
Situation Found	2010	2011	2012	2013	2014	2015
ATAL	345	356	353	340	354	350
ATAL-Smoke Conditions Only - No Fire	266	265	244	233	242	265
Residential Smoke Detector Sounding (No Fire)	66	64	81	79	83	60
Good Intent-Vicinity Alarm	13	27	28	28	29	25
Controlled Burn	98	88	112	126	115	94
Controlled Burning	33	32	44	39	36	24
Good Intent-Controlled Burning	65	56	68	87	79	70
Good Intent	4716	5469	5836	6552	7448	7594
Good Intent - Biohazard Scare	3	2	5	3	1	
Good Intent-Not Classified Above	4713	5467	5831	6549	7447	7594
Odor/Smoke	606	755	730	729	619	662
Good Intent-Steam, Other Gas Mistaken for Smoke	49	69	78	95	74	72
Service Call-Smoke, Odor Condition	557	686	652	634	545	590
RTQ	507	505	452	489	445	544
Good Intent-Rtq Prior to Arrival	507	505	452	489	445	544
Wrong Location	43	57	66	55	54	76
Good Intent-Wrong Location	43	57	66	55	54	76
Total	6315	7230	7549	8291	9035	9320



Service Call

Incident Overview

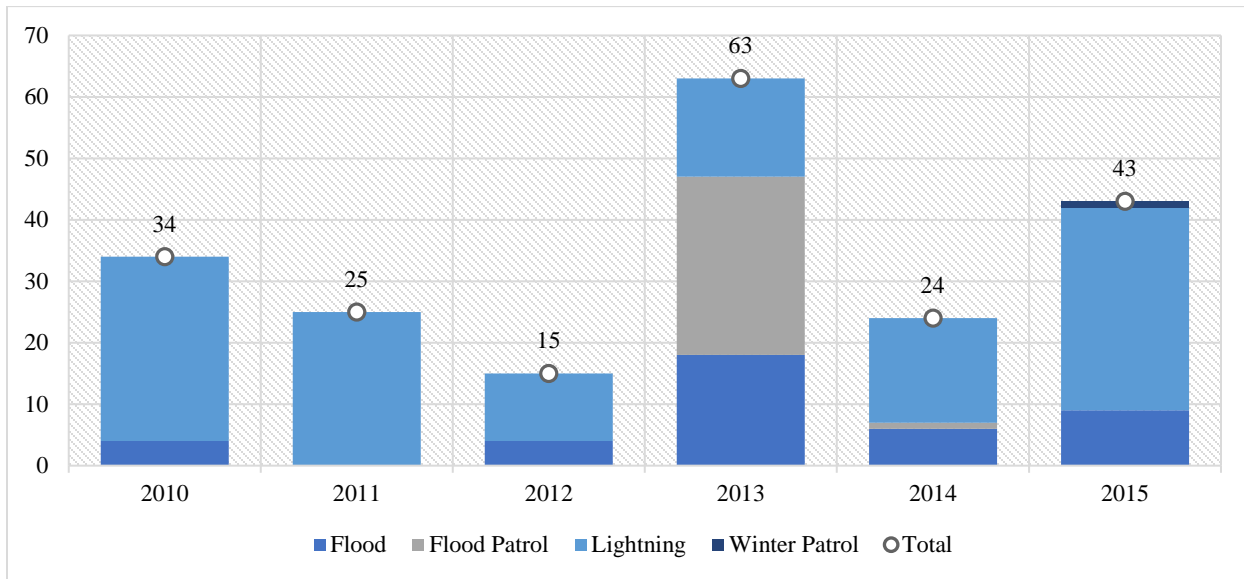
Situation Found	2010	2011	2012	2013	2014	2015
Assist Other Agency	858	1167	989	865	1030	929
Service Call-Assist Other Agency	858	1167	989	865	1030	929
CARES				2	805	1863
Service Call-Cares Call				2	805	1863
Lock Out	88	70	74	59	65	77
Service Call-Lock-Out (See Rescue-Lock-In)	88	70	74	59	65	77
Odor/Smoke	89	76	91	90	73	81
Service Call-Smoldering Food (No Ignition)	89	76	91	90	73	81
Other Service Call	286	386	405	525	318	264
Cover Assignment Standby, Move-Up	9	8	6	3	2	7
Service Call-Move-Up To Non-City Fire Station				2		
Service Call-Not Classified Above	277	378	399	520	316	257
Public Assist	2204	2860	3068	3415	4109	4119
Misc-Lifesafety Inspection	1		3	3	2	2
Service Call-Public Assist (No Medical)	2203	2860	3065	3412	4107	4117
Special Event	15	21	24	25	18	20
Misc-Special Events (Coordinator Only)	15	21	24	25	18	20
TMED	100	97	102	121	97	88
Service Call-Tactical Medical Response Operations	60	55	79	112	85	76
Service Call-Tactical Medical Standby	40	42	23	9	12	12
Unauthorized Burning	128	188	197	163	177	193
Service Call-Unauthorized Burning	128	188	197	163	177	193
Water Evacuation	62	256	60	125	129	95
ATAL-Water Flow Due To Pipe Break	22	137	26	74	79	52
Service Call-Water Evacuation	40	119	34	51	50	43
Total	3830	5121	5010	5390	6821	7729



Severe Weather

Incident Overview

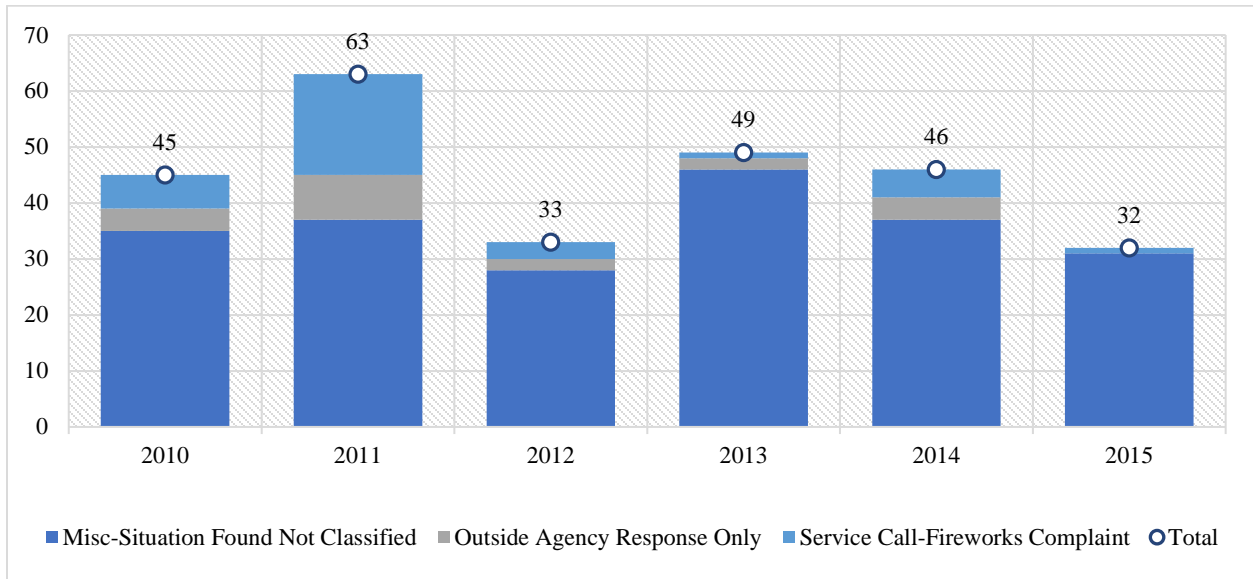
Situation Found	2010	2011	2012	2013	2014	2015
Flood	4		4	18	6	9
Flood Patrol				29	1	
Lightning	30	25	11	16	17	33
Winter Patrol						1
Total	34	25	15	63	24	43



Other

Incident Overview

Situation Found	2010	2011	2012	2013	2014	2015
Fireworks	6	18	3	1	5	1
Service Call-Fireworks Complaint	6	18	3	1	5	1
Other	39	45	30	48	41	31
Misc-Type Situation Found Not Classified Above	35	37	28	46	37	31
Outside Agency Response Only	4	8	2	2	4	
Grand Total	45	63	33	49	46	32



Mutual Aid

Mutual Aid	2010	2011	2012	2013	2014	2015
RECEIVED	14	21	14	22	39	50
False Alarm	2	3	1	1	3	5
Fire		3	3	2		2
Good Intent	2	5	5	11	8	9
Hazardous Condition	2				1	
Medical	4	8	5	8	20	27
Other					1	
Rescue	2				3	3
Service Call	2	2			3	4
GIVEN	263	272	299	218	274	336
False Alarm	24	5	9	15	9	13
Fire	19	17	11	11	9	9
Good Intent	27	16	22	21	27	63
Hazardous Condition	3	8	1	4	1	
Medical	156	173	212	132	171	184
Other	2	8	2	2	3	
Over-Pressure Rupture					1	
Rescue	3	7	6	8	19	28
Service Call	29	38	35	24	34	37
Severe Weather			1	1		2

Mutual Aid Received

Mutual Aid	2010	2011	2012	2013	2014	2015
RECEIVED	14	21	14	22	39	50
(Blank)		1	1		1	1
Air Force Academy Fire Department					3	3
Black Forest Fire Rescue District				1		2
Broadmoor Fire Protection District		1	3	8	2	5
Cimarron Hills Fire Protection District		1				
Colorado Centre	1			1		1
Colorado State Forest Service		1				
Donald Wescott Fire Protection District	7	13	5	5	10	9
El Paso County Fire Marshall (E.P.S.O)		1			1	
El Paso County Search & Rescue					1	
Ellicott Fire Protection District					1	
Falcon Fire Protection District	2			1		
Fort Carson Fire Department	1			1	1	
Highway 115 Fire Protection District						1
Manitou Springs Volunteer Fire Department			1			
Norad/Cheyenne Mtn Fire Department		1	1	3	17	22
Peterson Afb Fire Department			1	1		1
Security Fire Protection District						2
State Patrol			1			
Stratmoor Hills Fire Protection District	3	1	1	1	2	3
United States Forest Service		1				

Mutual Aid Given

Mutual Aid	2010	2011	2012	2013	2014	2015
Given	263	272	299	218	274	336
(Blank)	181	204	213	119	196	221
Air Force Academy Fire Department	2	1	1		13	23
Black Forest Fire Rescue District		3	1	4	3	2
Broadmoor Fire Protection District	39	11	32	29	16	9
Calhan Volunteer Fire Department	1		1		1	
Cimarron Hills Fire Protection District	2	5	4	14	6	3
Colorado Centre	3	3	4	5	4	14
Colorado State Forest Service	1	2	1			
Crystal Park Volunteer Fire Department		2			1	
Department/Agency Not Specified Above		6	1		2	
Divide/Florissant Fire Protection District						1
Donald Wescott Fire Protection District	8	2	5	5	10	17
El Paso County Fire Marshall (E.P.S.O)	1		2	2		1
El Paso County Search & Rescue	2		2			1
Ellicott Fire Protection District	1	1	4	1		2
Falcon Fire Protection District	1	2	2	2	1	
Fort Carson Fire Department	2	1	4	1		1
Fountain Fire Department	3	3	1	2	1	2
Hanover Volunteer Fire Department			1			1
Highway 115 Fire Protection District	1					
Manitou Springs Volunteer Fire Department	2	2	1	5	2	1
Norad/Cheyenne Mtn Fire Department	1	1	2	2	3	17
Northeast Teller County Fire Protection District			1			
Peterson Afb Fire Department			5	7	3	7
Peyton Fire Protection District						1
Security Fire Protection District				1	2	3
Stratmoor Hills Fire Protection District	10	21	11	16	9	5
Tri-County Volunteer Fire Department				1		2
Tri-Lakes Fire Protection District						2
United States Forest Service	2	2		2		
Victor Volunteer Fire Department					1	

Appendix

Appendix A: Glossary

12-Minute Structure Fire Response (12-Min SFIR): ERF for structure fires is defined as two engines and one truck all arriving emergent. The goal is to have SFIR ERF arrive at situations within 12 minutes, 90% of the time.

8-Minute First Company Response Coverage (8-Min FCR): Measure is defined as arrival of the first emergent apparatus to incidents within one of the 9 PEZs. The goal is to have the first unit arrive on scene to emergent incidents within 8 minutes, 90% of the time.

Alarm Time: This is the time the alarm is received by the 911 call center.

Arrival Time: This is the time the first company arrives to the incident.

ATAL: Automatic Alarm

ATCO: Automatic Alarm - Carbon Monoxide

ATMA: Automatic Alarm - Medical

CAGR: Compound Annual Growth Rate.

CAD: Computer Aided Dispatch

Company Response Time: This is the difference between dispatched time and arrival time.

Cover: The percentage of time that the fire department meets its response coverage goals.

Dispatched Time: This is the time a CSFD company is assigned to the call.

ERF: Effective Response Force

Emergent Response Incident: An incident to which the apparatus responded “emergent” (lights and sirens) the entire route. Only incidents where the apparatus responded emergent the entire route are included in response coverage figures.

Fire Demand Zone (FDZ): The smallest geographical unit at which incident rates are measured by the CSFD

First-Due Response Area or Still District: The area to which a station is assigned as the first responding station. If the First-Due station is out of service, the second due station is called, etc.

GFIR: Grass Fire

HAZCND: Hazardous Condition

HZMT: Hazardous Material

Incident: A call received by the Communications Center through 911 to which at least one CSFD apparatus was assigned.

INV: Investigation

MED: Medical

MPDS Category: Medical Priority Dispatch System. A five-digit code and method used to classify and prioritize medical incidents.

MPDS Priority: A value usually ranging from A to E, with A being the least emergent category and E being the greatest.

MUA: Mutual Aid

OthFir: Other Fire

Planning Evaluation Zone (PEZ): There are 9 Planning Evaluation Zones in the city. Coverage statistics and standards are often evaluated at both the PEZ and city levels.

Resc: Rescue

Response Time: The time between receiving a call and the company is en route and begins traveling towards an incident.

SFIR: Structure Fire

Situation Found: Multiple “situation found” can be identified for an incident. Unless otherwise stated, all tables and graphs are categorized by the primary situation found. (Alternatively, calls may be classified by “CAD Category.” These tables are explicitly identified.)

TA: Traffic Accident

TEMS: Tactical Emergency Medical Services

Total Response Time: This is the difference between alarm time and arrival time.

Turn-Out Time: This is the difference between dispatched time and response time.

VFIR: Vehicle Fire

Colorado Springs Fire Department

FINANCE, PLANNING, & ANALYSIS

“To provide innovative analytical and planning services and sound financial management to maintain and enhance the Department's ability to protect life and property.”

375 Printers Pkwy Colorado Springs, CO 80910

Tel (719) 385-5950

Fax (719) 385-7388

<https://csfd.coloradosprings.gov/>



Report Created by J. Mitchell