

SafetySpot

Community Risk Reduction



Don't Get Swept Away!

Flash flooding is the most common natural hazard in Colorado Springs. Runoff from the mountains can quickly cause the water levels of small creeks and dry stream beds to rise to unsafe levels. Know which streams and waterways are nearby, and where you are in relation to them. The recent Waldo Canyon Fire has significantly changed the landscape, presenting risk of debris flow and flooding. Hillsides once protected by vegetation have been compromised and precipitation could have significant impacts on the landscape.

If a flood warning or watch is in effect, move to higher ground and avoid areas subject to flooding. If water rises in your home before you can evacuate, move to the top floor, attic or roof. Stay aware of local flash flood warnings through local radio, TV and online and have a battery-operated radio available. If you come in contact with floodwaters, wash your hands with soap and disinfected water.

No matter where you live, you have the risk of being impacted by flooding. It only takes 6 inches of fast moving water to knock you off of your feet, just 10 inches of moving water can move a car and 18 inches of water can float your vehicle!



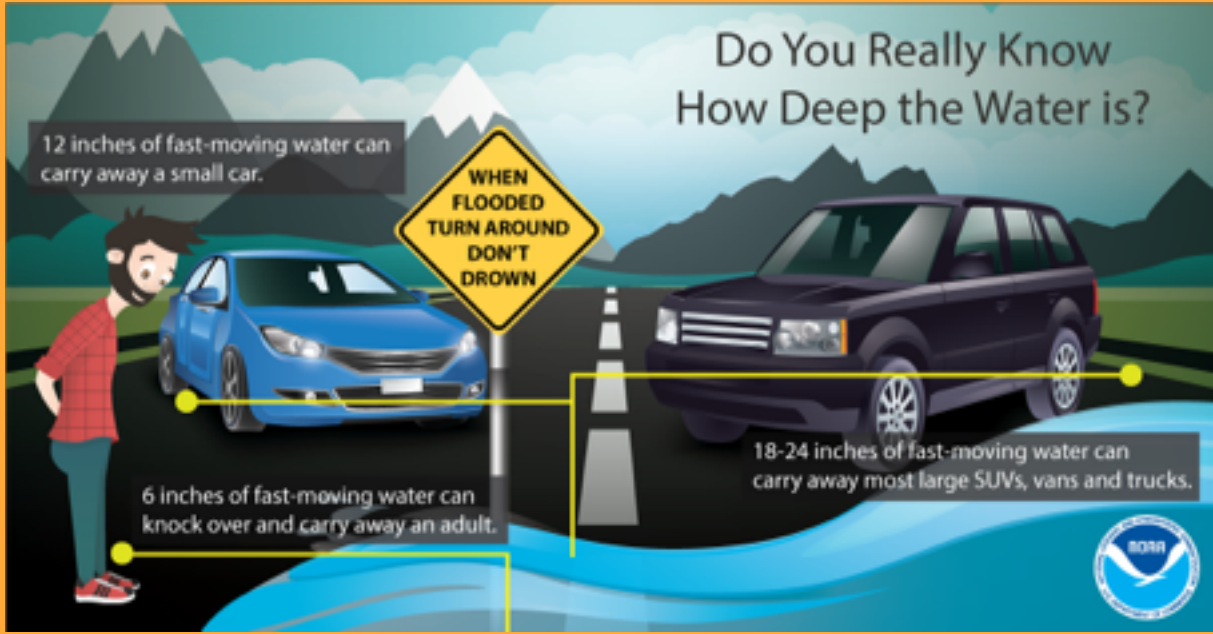
DIVISION OF THE
FIRE MARSHAL

PREVENTION

EDUCATION

INTERVENTION

IMPACT



Action Steps You Can Take:

If you see clogged inlets or other public drainage infrastructure problems, report it immediately to:

*City Streets Division
(719) 385-5934*

*El Paso County Public
Service Dept.
(719) 520-6891*

ADVISORIES, WATCHES & WARNINGS:

- An **“urban and small stream advisory”** means that isolated flooding of streams, streets, and low-lying areas, such as railroad underpasses and urban storm drains is occurring.
- A **“flash flood watch”** means that flash flooding is possible. Be alert and prepared to move to high ground. Watch for rising water levels or unusual street flooding is possible. Listen to local radio or

television stations or Weather Service radio for possible flash flood warnings and bulletins. Locate a hand crank or battery powered radio and extra batteries.

- A **“flash flood warning”** means that a flash flood is occurring or is about to occur. If necessary relocate immediately and seek high ground away from high risk areas and water. Do not attempt to cross moving water either on foot or in your vehicle.

**Source NOAA*

CONTACT US FOR MORE INFORMATION