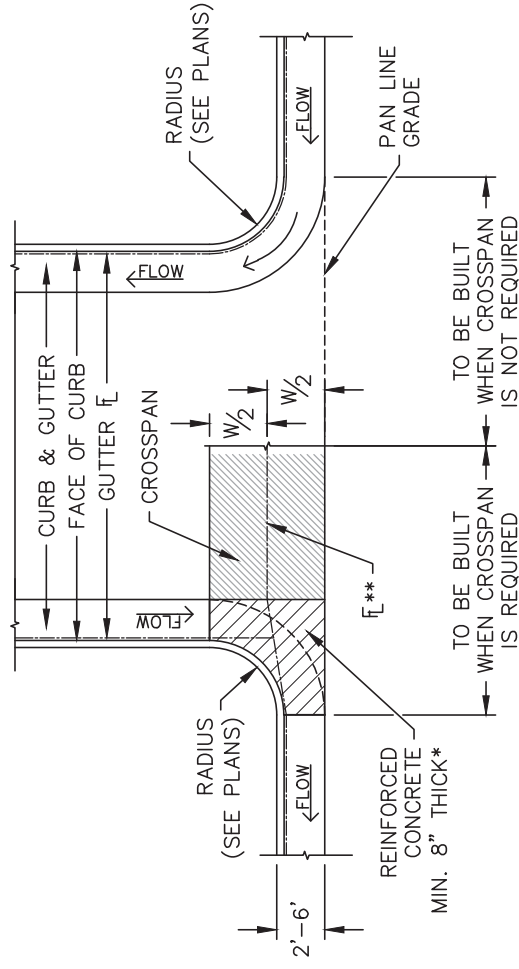


GENERAL NOTES:

1. ALL WORK SHALL BE DONE IN ACCORDANCE WITH CURRENT CITY OF COLORADO SPRINGS ENGINEERING DIVISION (THE CITY) STANDARD SPECIFICATIONS.
2. THE CONTRACTOR SHALL OBTAIN ALL REQUIRED PERMITS. FOR CITY PERMITS CONTRACTORS SHALL USE THE ACCELA ON-LINE PERMIT SYSTEM. ONCE CITY PERMITS ARE APPROVED AND PAID, THEN APPROPRIATE SCHEDULING AND NOTIFICATIONS SHALL BE IN ACCELA.
3. PRIOR TO OPENING TO TRAFFIC, CONCRETE SHALL HAVE A MINIMUM COMPRESSIVE STRENGTH OF 3,200 PSI AS DEMONSTRATED BY FIELD CURE CYLINDERS, AND USE A CITY APPROVED CONCRETE MIX.
4. 1-INCH DEEP TOOL JOINTS SHALL BE INSTALLED AT 10-FOOT SPACING.
5. A BROOM FINISH, WITH SWEEPS IN THE DIRECTION OF FLOW SHALL BE APPLIED TO ALL GUTTER PANS.
6. THE CONTRACTOR SHALL STAMP THEIR COMPANY NAME AND CONSTRUCTION DATE A MINIMUM EVERY 100-FEET OR FRACTION THEREOF ON FRONT FACE OF CURB.
7. NEW ASPHALT SHALL NOT BE PLACED AGAINST FRESHLY POURED CONCRETE. CONCRETE SHALL BE 5-DAYS OLD OR HAVE A COMPRESSIVE STRENGTH OF 3,200 PSI AS DEMONSTRATED BY FIELD CURE CYLINDERS.
8. ALL CURB TRANSITIONS (ONE TYPE TO ANOTHER) WILL BE 10-FOOT UNLESS OTHERWISE NOTED.
9. CONTACT THE CITY FORESTRY DIVISION, PRIOR TO STARTING WORK, IF IT IS NECESSARY TO DISTURB TREES OR ROOTS.
10. WHITE CURE SHALL BE PLACED WITH 100% COVERAGE, AND MEET THE SPECIFICATION OF SECTION 500.
11. GUTTER IN/OUT SLOPES AT CURB CUTS FOR CURB RAMPS SHALL BE LESS THAN 5% AND BE A.D.A. COMPLIANT (SEE CURB RAMP DETAILS).
12. CURB ENDINGS SHALL BE PLACED WHERE CURB AND GUTTER DEAD-ENDS.
13. CURB CUTS FOR DRIVEWAYS ARE SHOWN ON THE DRIVEWAY DETAILS.



*THIS AREA SHALL BE POURED MONOLITHICALLY WITH CURB AND GUTTER AND PAID FOR AS REINFORCED CONCRETE 8".

**FLOW LINE IN CROSSSPAN ESTABLISHED BY W/2.

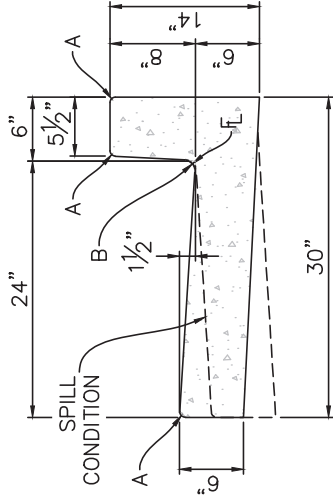
CONSTRUCTION OF CONCRETE GUTTERS AT INTERSECTION



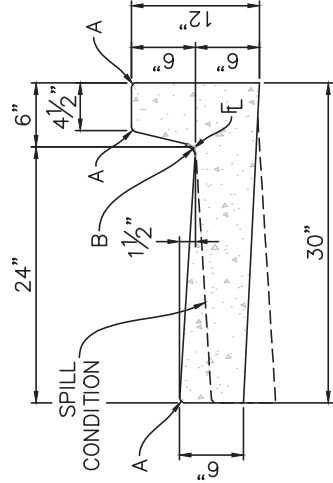
CURB & GUTTER
GENERAL NOTES & DETAILS

APPROVED: *Jayla Sturdivant*
CITY ENGINEER

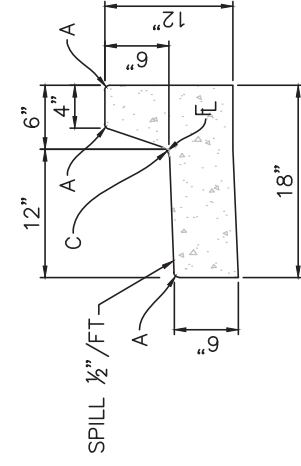
ISSUED: 2/26/20
REVISED: DRAWING NO. 6A



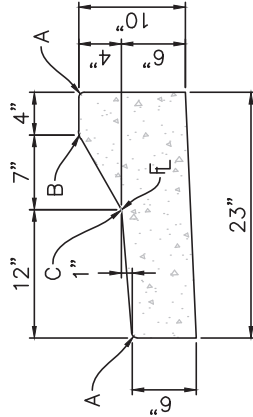
TYPE 1
8" VERTICAL



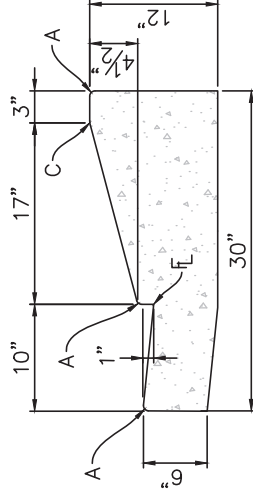
TYPE 2
6" VERTICAL



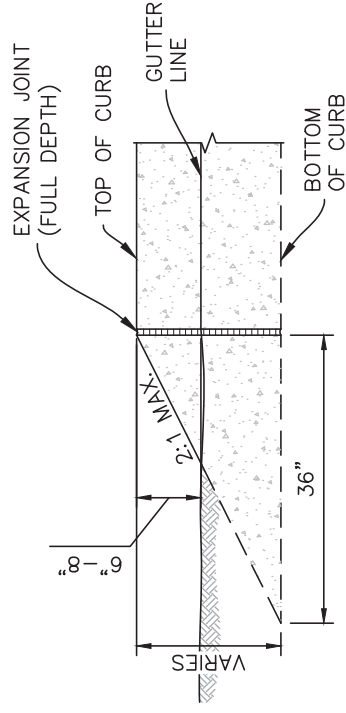
TYPE 3
STANDARD MEDIAN



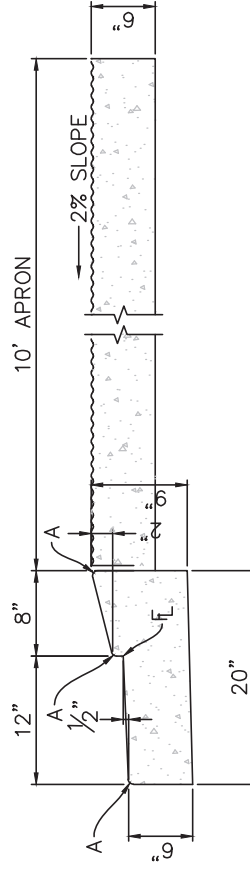
TYPE 4
MOUNTABLE



TYPE 5
RESIDENTIAL CURB & GUTTER ONLY



CURB ENDING



ROUNDABOUT APRON

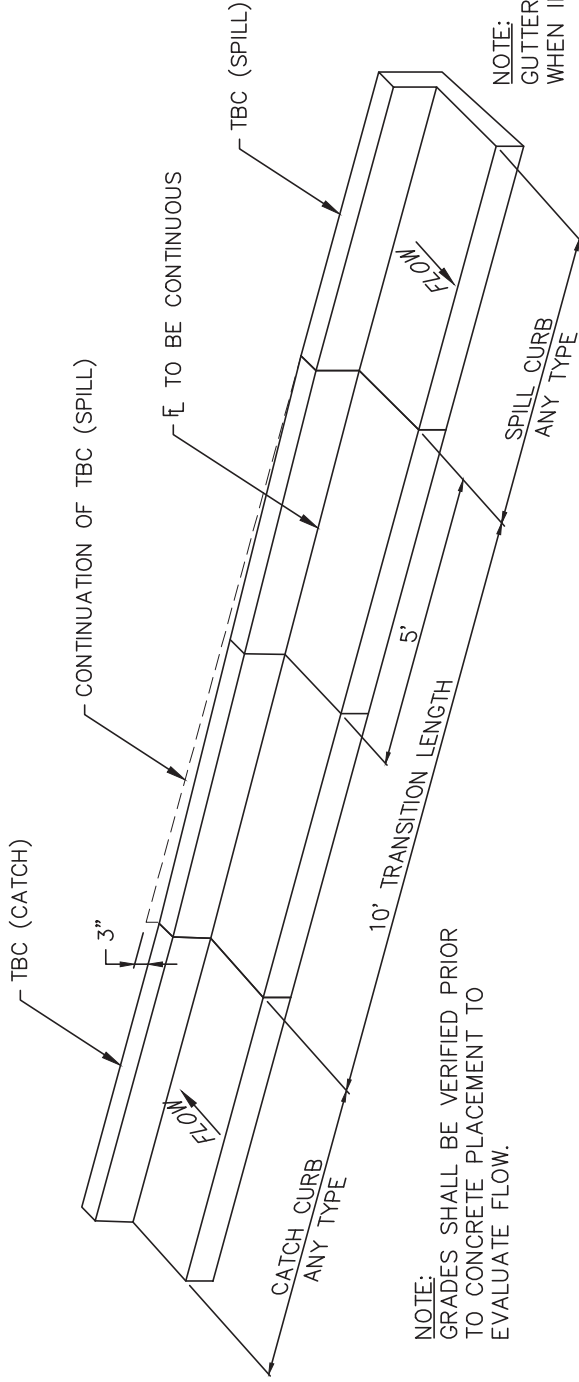
NOTE:
TYPE 1 AND 2 SPILL GUTTER MUST BE APPROVED BY CITY ENGINEERING.
TYPE 5 IS CARRY CURB ONLY.

RADII	LEGEND
A	1/4" - 1/2"
B	1 1/2"
C	1 1/2" - 2"



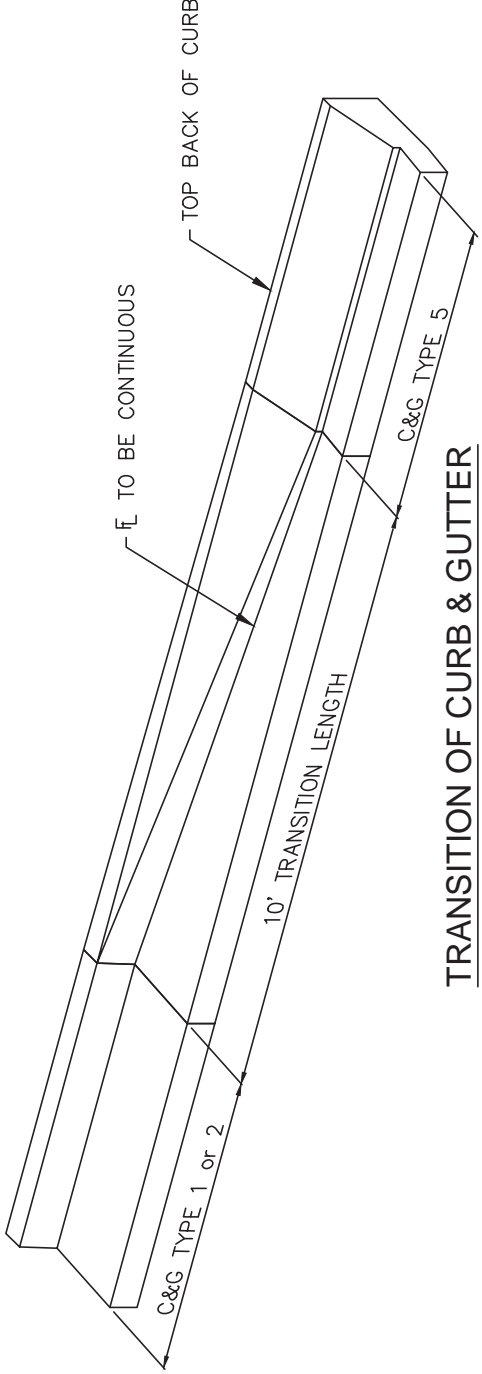
CURB & GUTTER
DETAILS

APPROVED: *Jayla Sturdivant*
CITY ENGINEER
ISSUED: 2/26/20
REVISED:
DRAWING NO. 6B



NOTE:
GUTTER SHALL SLOPE AT 1/2" / FT
WHEN IN A SPILL CONDITION.

TRANSITION OF CURB & GUTTER
BETWEEN CATCH and SPILL



TRANSITION OF CURB & GUTTER
BETWEEN TYPE 1 or 2 and TYPE 5



**CURB & GUTTER
TRANSITIONS**

APPROVED:	<i>Jayle Sturdivant</i>
CITY ENGINEER	
ISSUED:	2/26/20
REVISED:	
DRAWING NO.	6C