

# Site Accessibility Evaluation

## Americans with Disabilities Act Title II (Public Services: State and Local Government)



### Fire Station 19

**2490 Research Pkwy  
Colorado Springs, CO  
80920**

**Accessibility Evaluation**

***Inspection Date: 12/14/2016  
Inspector: Michael Killebrew,  
Anna Kangas***

**Prepared By**



OLYMPIC CITY USA

**(719) 385 - 5175**

**<https://coloradosprings.gov/>**

TO: CSFD

FROM: Robert L. Hernandez

DATE: May 31, 2019

SUBJECT: Fire Station 19 Self-Evaluation

1. On December 14, 2016, Mr. Michael Killebrew, Title II ADA/Section 504 Coordinator performed a Title II - Americans with Disabilities Act (ADA), Self-Evaluation. This evaluation was in accordance with 1991/2010 ADA Standards for Accessible Design. A reevaluation was conducted on April 3, 2019 with the assistance of Anna Kangas, Architect/Title II ADA/Section 504 Coordinator.

2. Priorities for accessibility are assigned in accordance with the ADA Checklist for Existing Facilities. The checklist follows the four priorities listed in the Department of Justice ADA Title III regulations. These priorities are equally applicable to state and local government facilities:

Priority 1 - Accessible approach and entrance

Priority 2 - Access to goods and services

Priority 3 - Access to public toilet rooms

Priority 4 - Access to other items such as water fountains and public telephones

3. Corrective actions to findings were/will be submitted for corrective action through the city maintenance work request system and Transition Plan. Note: Recommended corrections in some cases where needed will be modified when appropriate. Corrections are developed in consideration of the "Program Access" provisions of Title II, where applicable.

4. A copy of this report will be maintained in the Office of Accessibility.

City of Colorado Springs Title II ADA/Section 504 – Manager  
30 S. Nevada Ave, Suite 301  
Colorado Springs, CO 80903  
robert.hernandez@coloradosprings.gov

Atch 1. City of Colorado Springs, ADA Self-Evaluation Report

Sincerely,



Robert Hernandez

## Exterior - Parking

Lat: 38.9599094000, Long: -104.7807703000

### Finding: 1

The striping and markings for the accessible parking stall, loading/unloading access aisle are dilapidated and in need of repair and/or maintenance.

2010 ADAS Section 502.3.3

Access aisles shall be marked so as to discourage parking in them.

#### Citation:

2010 ADAS Section: 502.3.3

#### As Built:

The parking lot striping has faded and the number of parking spaces can't be determined.

#### Recommendation:

Repaint the striping. At least one van accessible space with an access aisle should be provided.

Parking was restriped.

#### Barrier Priority:

1 (High): Should be completed immediately. (Includes findings that have little or no cost, were in violation of the codes at the time of construction, or pose an imminent safety threat)

#### Department:

CSFD



**Finding #1 Additional Finding Photos**



Finding 184337 Additional Photo

CORRECTED

## Exterior - Accessible Routes

**Lat: 38.9599094000, Long: -104.7807703000**

### Finding: 2

The detectable warning is missing at the curb ramp.

**Curb ramps shall have a detectable warning that extends the full width of the curb ramp, excluding the flared sides, 24 inch minimum in the direction of travel.**

*2011 PROWAG Section R208.1*

*Detectable warning surfaces complying with R305 shall be provided at the following locations on pedestrian access routes and at transit stops:*

- 1. Curb ramps and blended transitions at pedestrian street crossings;*
  - 2. Pedestrian refuge islands;*
  - 3. Pedestrian at-grade rail crossings not located within a street or highway;*
  - 4. Boarding platforms at transit stops for buses and rail vehicles where the edges of the boarding platform are not protected by screens or guards; and*
  - 5. Boarding and alighting areas at sidewalk or street level transit stops for rail vehicles where the side of the boarding and alighting areas facing the rail vehicles is not protected by screens or guards.*
- Advisory R208.1 Where Required. On pedestrian access routes, detectable warning surfaces indicate the boundary between pedestrian and vehicular routes where there is a flush rather than a curbed connection. Detectable warning surfaces should not be provided at crossings of residential driveways since the pedestrian right-of-way continues across residential driveway aprons. However, where commercial driveways are provided with yield or stop control, detectable warning surfaces should be provided at the junction between the pedestrian route and the vehicular route. Where pedestrian at-grade rail crossings are located within a street or highway, detectable warning surfaces at the curb ramps or blended transitions make a second set of detectable warning surfaces at the rail crossing unnecessary.*

*Detectable warning surfaces are not intended to provide wayfinding for pedestrians who are blind or have low vision. Wayfinding can be made easier by:*

- Sidewalks that provide a clear path free of street furniture;*
- Visual contrast between walking and non-walking areas (e.g., planted borders);*
- Route edges that are clear and detectable by cane;*
- Direct pedestrian street crossings and curb ramps that are in-line with direction of travel;*
- Small corner radiuses that permit pedestrian street crossings to be as short and direct as possible;*
- Orthogonal intersections that facilitate navigation using parallel and perpendicular vehicle sound cues;*
- and barriers where pedestrian travel or crossing is not permitted.*

### Citation:

**2011 PROWAG Section: R208.1**

### As Built:

**There are no detectable warnings on this curb ramp.**

### Recommendation:

**Install detectable warnings.**

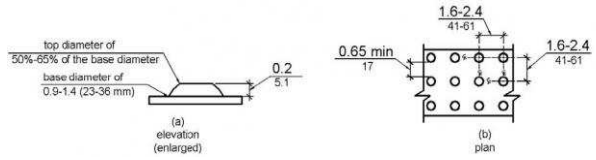
**Detectable warnings were installed.**

### Barrier Priority:

**1 (High): Should be completed immediately. (Includes findings that have little or no cost, were in**

violation of the codes at the time of construction, or pose an imminent safety threat)

**Department:**  
CSFD



**Finding #2 Additional Finding Photos**



Finding 184338 Additional Photo



Finding 184338 Additional Photo

CORRECTED

## Interior - Foyer

Lat: 38.9599094000, Long: -104.7807703000

### Finding: 3

The door bell is positioned too high for either a side or front approach.

Where a clear floor or ground space allows a parallel approach to an element and the side reach is unobstructed, the high side reach shall be 48 inches maximum and the low side reach shall be 15 inches minimum above the finish floor or ground.

Where a forward reach is unobstructed, the high forward reach shall be 48 inches maximum and the low forward reach shall be 15 inches minimum above the finish floor or ground.

2010 ADAS Section 308.1  
Reach ranges shall comply with 308.

#### Citation:

2010 ADAS Section: 308.1

#### As Built:

The door bell in the foyer is mounted at 49-1/2".

#### Recommendation:

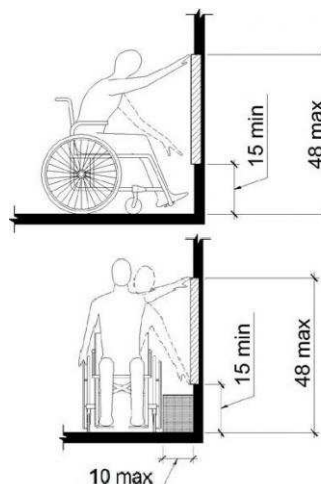
Lower the door bell to at or under 48".

#### Barrier Priority:

2 (Important): Should be completed as soon as possible. (Includes findings that would remove barriers to the greatest number of people to your goods and services)

#### Department:

CSFD





## Interior - Foyer

Lat: 38.9599094000, Long: -104.7807703000

### Finding: 4

There is not enough knee clearance under the drinking fountain.

The drinking fountain must have a clear knee space between the bottom of the drinking fountain and the floor not less than 27 inches in height, 30 inches in width, and 8 inches in depth.

2010 ADAS Section 602.2

Units shall have a clear floor or ground space complying with 305 positioned for a forward approach and centered on the unit. Knee and toe clearance complying with 306 shall be provided.

#### Citation:

2010 ADAS Section: 602.2

#### As Built:

The drinking fountain has 26-1/2" knee clearance.

#### Recommendation:

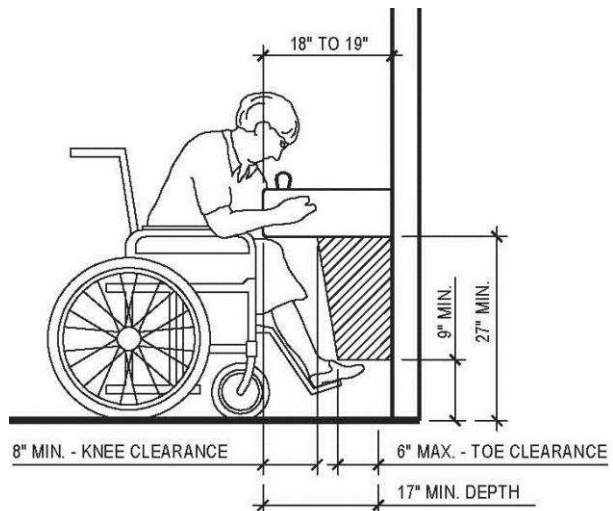
Raise the drinking fountain 1/2".

#### Barrier Priority:

4 (Low): Should be completed as soon as possible due to being a technical violation, but may not result in providing greater access to persons with disabilities. (Includes findings that are technically violations but provide a moderate to low increase in accessibility compared to the financial impact on the entity)

#### Department:

CSFD



## **Interior - Community Room**

**Lat: 38.9599094000, Long: -104.7807703000**

### **Finding: 5**

The wall sign is mounted too high.

Tactile Characters on signs shall be located 48 inches minimum above the finish floor or ground surface, measured from the baseline of the lowest tactile character and 60 inches maximum above the finish floor or ground surface, measured from the baseline of the highest tactile character. Mounting location shall be determined so that a person may approach within 3 inches of signage without encountering protruding objects and shall be located so that a clear floor space of 18 inches minimum by 18 inches minimum, centered on the tactile Characters, is provided beyond the arc of any door swing between the closed position and 45 degree open position.

*2010 ADAS Section 703.4.1*

*Tactile characters on signs shall be located 48 inches (1220 mm) minimum above the finish floor or ground surface, measured from the baseline of the lowest tactile character and 60 inches (1525 mm) maximum above the finish floor or ground surface, measured from the baseline of the highest tactile character.*

#### **Citation:**

2010 ADAS Section: 703.4.1

#### **As Built:**

The signage for the community room is mounted at 84" above the double doors.

#### **Recommendation:**

Install a tactile/Braille sign to the right side of the double doors 60" to the top edge.

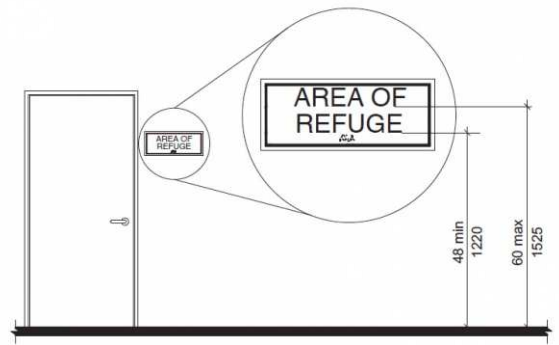
#### **Barrier Priority:**

2 (Important): Should be completed as soon as possible. (Includes findings that would remove barriers to the greatest number of people to your goods and services)

#### **Department:**

CSFD

Finding #5 Continued



## **Interior - Community Room**

**Lat: 38.9599094000, Long: -104.7807703000**

### **Finding: 6**

The door exceeds the maximum pressure to open the door.

Interior doors shall have a maximum opening force of 5 pounds.

These forces do not apply to the force required to retract latch bolts or disengage other devices that hold the door or gate in a closed position. Door closers and gate closers shall be adjusted so that from an open position of 90 degrees, the time required to move the door to a position of 12 degrees from the latch is 5 seconds minimum.

Door and gate spring hinges shall be adjusted so that from the open position of 70 degrees, the door or gate shall move to the closed position in 1.5 seconds minimum.

*2010 ADAS Section 404.2.9*

*Fire doors shall have a minimum opening force allowable by the appropriate administrative authority. The force for pushing or pulling open a door or gate other than fire doors shall be as follows: 1. Interior hinged doors and gates: 5 pounds (22.2 N) maximum. 2. Sliding or folding doors: 5 pounds (22.2 N) maximum. These forces do not apply to the force required to retract latch bolts or disengage other devices that hold the door or gate in a closed position.*

#### **Citation:**

2010 ADAS Section: 404.2.9

#### **As Built:**

The doors into the community room require 18 and 20 lbs of force to operate.

#### **Recommendation:**

Adjust the door tension to 5lbs maximum.

#### **Barrier Priority:**

1 (High): Should be completed immediately. (Includes findings that have little or no cost, were in violation of the codes at the time of construction, or pose an imminent safety threat)

#### **Department:**

CSFD

### Finding #6 Continued



**Interior - Community Room**

**Lat: 38.9599094000, Long: -104.7807703000**

**Finding: 7**

The paper towel dispenser's operation mechanism is too high off the floor.

Dispensers must have all operable parts a maximum of 48 inches above the floor.

2010 ADAS Section 308.2.1

Where a forward reach is unobstructed, the high forward reach shall be 48 inches (1220 mm) maximum and the low forward reach shall be 15 inches (380 mm) minimum above the finish floor or ground.

**Citation:**

2010 ADAS Section: 308.2.1

**As Built:**

the paper towel dispenser is mounted at 59-1/2" to the operable part.

**Recommendation:**

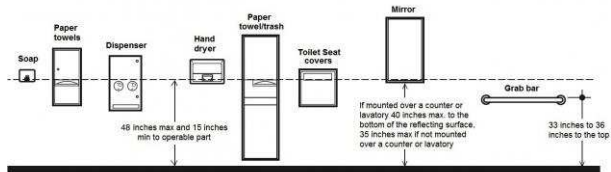
Lower the paper towel dispenser to 48" or lower to operable part.

**Barrier Priority:**

3 (Moderate): Should be completed as soon as possible, but there may be other items that will provide greater access to persons with disabilities. (Includes findings that have a high financial impact on the entity in relationship to the degree of access provided)

**Department:**

CSFD



## Interior - Women's Restroom

Lat: 38.9599094000, Long: -104.7807703000

### Finding: 8

The force required to operate the door hardware exceeds the maximum.

The force required to activate operable parts is 5 pounds maximum.

2010 ADAS Section 309.4

Operable parts shall be operable with one hand and shall not require tight grasping, pinching, or twisting of the wrist. The force required to activate operable parts shall be 5 pounds (22.2 N) maximum.

### Citation:

2010 ADAS Section: 309.4

### As Built:

The restroom door requires 20 lbs of force to operate.

### Recommendation:

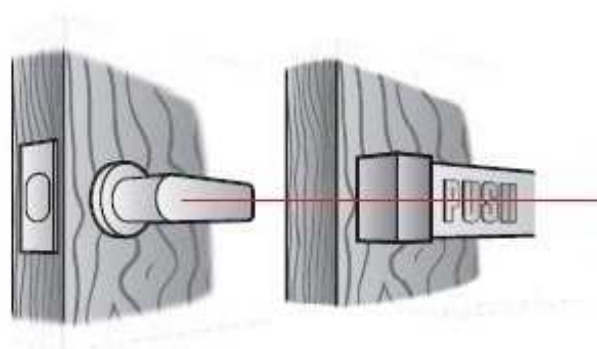
Adjust the door closer to 5lbs force to operate.

### Barrier Priority:

3 (Moderate): Should be completed as soon as possible, but there may be other items that will provide greater access to persons with disabilities. (Includes findings that have a high financial impact on the entity in relationship to the degree of access provided)

### Department:

CSFD



## Interior - Women's Restroom

Lat: 38.9599094000, Long: -104.7807703000

### Finding: 9

The door is equipped with a door closer and returns to a closed position too quickly.

Door closers and gate closers shall be adjusted so that from an open position of 90 degrees, the time required to move the door to a position of 12 degrees from the latch is 5 seconds minimum.

2010 ADAS Section 404.2.8.1

Door closers and gate closers shall be adjusted so that from an open position of 90 degrees, the time required to move the door to a position of 12 degrees from the latch is 5 seconds minimum.

### Citation:

2010 ADAS Section: 404.2.8.1

### As Built:

The restroom door closes too fast.

### Recommendation:

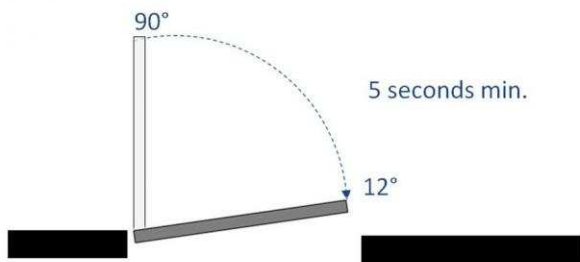
Adjust the door closer.

### Barrier Priority:

3 (Moderate): Should be completed as soon as possible, but there may be other items that will provide greater access to persons with disabilities. (Includes findings that have a high financial impact on the entity in relationship to the degree of access provided)

### Department:

CSFD





## Interior - Women's Restroom

Lat: 38.9599094000, Long: -104.7807703000

### Finding: 10

The paper towel dispenser's operation mechanism is too high off the floor.

Dispensers must have all operable parts a maximum of 48 inches above the floor.

2010 ADAS Section 308.2.1

Where a forward reach is unobstructed, the high forward reach shall be 48 inches (1220 mm) maximum and the low forward reach shall be 15 inches (380 mm) minimum above the finish floor or ground.

### Citation:

2010 ADAS Section: 308.2.1

### As Built:

The paper towel dispenser is mounted at 57" to the operable part.

### Recommendation:

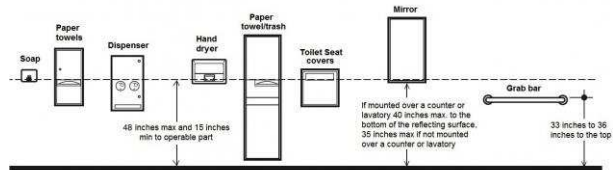
Lower the paper towel dispenser to 48" to the operable portion.

### Barrier Priority:

3 (Moderate): Should be completed as soon as possible, but there may be other items that will provide greater access to persons with disabilities. (Includes findings that have a high financial impact on the entity in relationship to the degree of access provided)

### Department:

CSFD



## Interior - Women's Restroom

Lat: 38.9599094000, Long: -104.7807703000

### Finding: 11

The flush handle is located on the wrong side of the toilet.

Controls shall be operable with one hand and shall not require tight grasping, pinching or twisting. Controls for the flush valves shall be mounted on the wide side of toilet areas, no more than 48 inches above the floor.

2010 ADAS Section 604.6

Flush controls shall be hand operated or automatic. Hand operated flush controls shall comply with 309. Flush controls shall be located on the open side of the water closet except in ambulatory accessible compartments complying with 604.8.2.

#### Citation:

2010 ADAS Section: 604.6

#### As Built:

The flush handle is on the wrong side of the toilet.

#### Recommendation:

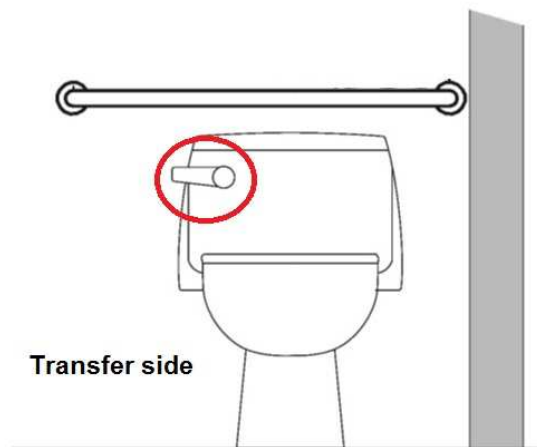
Install a new tank with the flush handle on the open side.

#### Barrier Priority:

3 (Moderate): Should be completed as soon as possible, but there may be other items that will provide greater access to persons with disabilities. (Includes findings that have a high financial impact on the entity in relationship to the degree of access provided)

#### Department:

CSFD



## Interior - Women's Restroom

Lat: 38.9599094000, Long: -104.7807703000

### Finding: 12

The side and rear grab bars are too high.

Grab bars shall be installed in a horizontal position, 33 inches minimum and 36 inches maximum above the finish floor measured to the top of the gripping surface and the space between the grab bar and the top of the tank shall be 1-1/2 inches minimum.

2010 ADAS Section 609.4

Grab bars shall be installed in a horizontal position, 33 inches (840 mm) minimum and 36 inches (915 mm) maximum above the finish floor measured to the top of the gripping surface, except that at water closets for children's use complying with 604.9, grab bars shall be installed in a horizontal position 18 inches (455 mm) minimum and 27 inches (685 mm) maximum above the finish floor measured to the top of the gripping surface. The height of the lower grab bar on the back wall of a bathtub shall comply with 607.4.1.1 or 607.4.2.1.

#### Citation:

2010 ADAS Section: 609.4

#### As Built:

The grab bars are mounted at 36-3/4".

#### Recommendation:

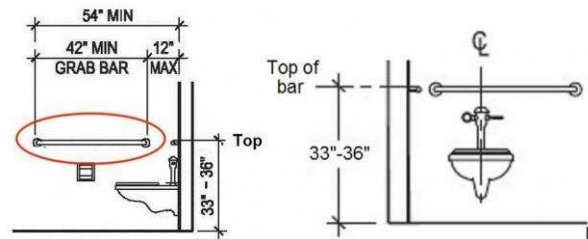
Lower the grab bars to under 36" to the top edge.

#### Barrier Priority:

3 (Moderate): Should be completed as soon as possible, but there may be other items that will provide greater access to persons with disabilities. (Includes findings that have a high financial impact on the entity in relationship to the degree of access provided)

#### Department:

CSFD



**Interior - Men's Restroom**

**Lat: 38.9599094000, Long: -104.7807703000**

**Finding: 13**

The door exceeds the maximum pressure to open the door.

Interior doors shall have a maximum opening force of 5 pounds.

These forces do not apply to the force required to retract latch bolts or disengage other devices that hold the door or gate in a closed position. Door closers and gate closers shall be adjusted so that from an open position of 90 degrees, the time required to move the door to a position of 12 degrees from the latch is 5 seconds minimum.

Door and gate spring hinges shall be adjusted so that from the open position of 70 degrees, the door or gate shall move to the closed position in 1.5 seconds minimum.

*2010 ADAS Section 404.2.9*

*Fire doors shall have a minimum opening force allowable by the appropriate administrative authority. The force for pushing or pulling open a door or gate other than fire doors shall be as follows: 1. Interior hinged doors and gates: 5 pounds (22.2 N) maximum. 2. Sliding or folding doors: 5 pounds (22.2 N) maximum. These forces do not apply to the force required to retract latch bolts or disengage other devices that hold the door or gate in a closed position.*

**Citation:**

2010 ADAS Section: 404.2.9

**As Built:**

The door into the restroom requires 22 lbs of force to open.

**Recommendation:**

Adjust the door closer to 5 lbs force.

**Barrier Priority:**

3 (Moderate): Should be completed as soon as possible, but there may be other items that will provide greater access to persons with disabilities. (Includes findings that have a high financial impact on the entity in relationship to the degree of access provided)

**Department:**

CSFD



## Interior - Men's Restroom

Lat: 38.9599094000, Long: -104.7807703000

### Finding: 14

The door is equipped with a door closer and returns to a closed position too quickly.

Door closers and gate closers shall be adjusted so that from an open position of 90 degrees, the time required to move the door to a position of 12 degrees from the latch is 5 seconds minimum.

*2010 ADAS Section 404.2.8.1*

*Door closers and gate closers shall be adjusted so that from an open position of 90 degrees, the time required to move the door to a position of 12 degrees from the latch is 5 seconds minimum.*

#### Citation:

2010 ADAS Section: 404.2.8.1

#### As Built:

The door into the restroom closes too fast.

#### Recommendation:

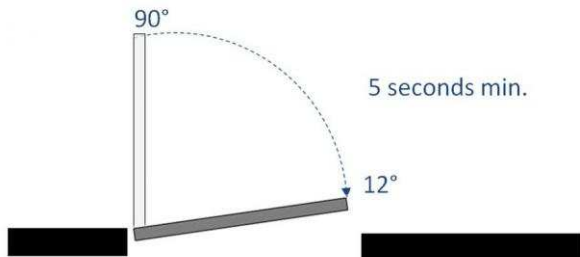
Adjust the door closer.

#### Barrier Priority:

3 (Moderate): Should be completed as soon as possible, but there may be other items that will provide greater access to persons with disabilities. (Includes findings that have a high financial impact on the entity in relationship to the degree of access provided)

#### Department:

CSFD



**Interior - Men's Restroom**

**Lat: 38.9599094000, Long: -104.7807703000**

**Finding: 15**

The paper towel dispenser's operation mechanism is too high off the floor.

Dispensers must have all operable parts a maximum of 48 inches above the floor.

2010 ADAS Section 308.2.1

Where a forward reach is unobstructed, the high forward reach shall be 48 inches (1220 mm) maximum and the low forward reach shall be 15 inches (380 mm) minimum above the finish floor or ground.

**Citation:**

2010 ADAS Section: 308.2.1

**As Built:**

The paper towel dispenser is mounted at 56" to the operable part.

**Recommendation:**

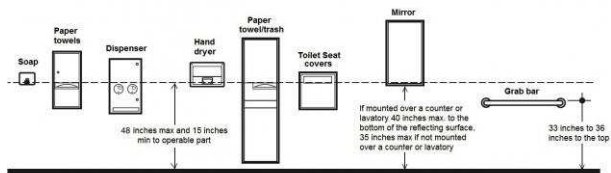
Lower the paper towel dispenser to under 48" to the operable feature.

**Barrier Priority:**

3 (Moderate): Should be completed as soon as possible, but there may be other items that will provide greater access to persons with disabilities. (Includes findings that have a high financial impact on the entity in relationship to the degree of access provided)

**Department:**

CSFD



## Interior - Men's Restroom

Lat: 38.9599094000, Long: -104.7807703000

### Finding: 16

The side and rear grab bars are too high.

Grab bars shall be installed in a horizontal position, 33 inches minimum and 36 inches maximum above the finish floor measured to the top of the gripping surface and the space between the grab bar and the top of the tank shall be 1-1/2 inches minimum.

2010 ADAS Section 609.4

Grab bars shall be installed in a horizontal position, 33 inches (840 mm) minimum and 36 inches (915 mm) maximum above the finish floor measured to the top of the gripping surface, except that at water closets for children's use complying with 604.9, grab bars shall be installed in a horizontal position 18 inches (455 mm) minimum and 27 inches (685 mm) maximum above the finish floor measured to the top of the gripping surface. The height of the lower grab bar on the back wall of a bathtub shall comply with 607.4.1.1 or 607.4.2.1.

#### Citation:

2010 ADAS Section: 609.4

#### As Built:

The grab bars are mounted at 36-3/4".

#### Recommendation:

Lower the grab bars to under 36" to the top edge.

#### Barrier Priority:

3 (Moderate): Should be completed as soon as possible, but there may be other items that will provide greater access to persons with disabilities. (Includes findings that have a high financial impact on the entity in relationship to the degree of access provided)

#### Department:

CSFD

