

Site Accessibility Evaluation

Americans with Disabilities Act Title II (Public Services: State and Local Government)



Fire Station 22

**711 Copper Center Pkwy
Northgate, CO 80921**

Accessibility Evaluation

***Inspection Date: 12/12/2016
Inspector: Michael Killebrew,
Anna Kangas***

Prepared By



OLYMPIC CITY USA

(719) 385 - 5175

<https://coloradosprings.gov/>

TO: CSFD

FROM: Robert L. Hernandez

DATE: May 31, 2019

SUBJECT: Fire Station 22 Self-Evaluation

1. On December 12, 2016, Mr. Michael Killebrew, Title II ADA/Section 504 Coordinator performed a Title II - Americans with Disabilities Act (ADA), Self-Evaluation. This evaluation was in accordance with 1991/2010 ADA Standards for Accessible Design. A re-evaluation was conducted on April 25, 2019 with the assistance of Anna Kangas, Architect/Title II ADA/Section 504 Coordinator.

2. Priorities for accessibility are assigned in accordance with the ADA Checklist for Existing Facilities. The checklist follows the four priorities listed in the Department of Justice ADA Title III regulations. These priorities are equally applicable to state and local government facilities:

Priority 1 - Accessible approach and entrance

Priority 2 - Access to goods and services

Priority 3 - Access to public toilet rooms

Priority 4 - Access to other items such as water fountains and public telephones

3. Corrective actions to findings were/will be submitted for corrective action through the city maintenance work request system and Transition Plan. Note: Recommended corrections in some cases where needed will be modified when appropriate. Corrections are developed in consideration of the "Program Access" provisions of Title II, where applicable.

4. A copy of this report will be maintained in the Office of Accessibility.

City of Colorado Springs Title II ADA/Section 504 – Manager
30 S. Nevada Ave, Suite 301
Colorado Springs, CO 80903
robert.hernandez@coloradosprings.gov

Atch 1. City of Colorado Springs, ADA Self-Evaluation Report

Sincerely,



Robert Hernandez

Exterior - Accessible Routes

Lat: 39.0208006000, Long: -104.8128991000

Finding: 1

The building entrance is not located on an accessible route.

When a building, or portion of a building, is required to be accessible, an accessible route of travel shall be provided to all portions of the building, to accessible building entrances and between the building and the public way.

All walks, halls, corridors, aisles, skywalks, tunnels, and other spaces that are part of an accessible route must comply. An accessible route of travel must not pass through kitchens, storage rooms, restrooms, closets or other spaces used for similar purposes. At least one accessible route within the boundary of the site must be provided from public transportation stops, accessible parking and accessible passenger loading zones and public streets or sidewalks to the accessible building entrance they serve.

The accessible route shall, to the maximum extent feasible, coincide with the route for the general public. At least one accessible route shall connect accessible buildings, facilities, elements and spaces that are on the same site. At least one accessible route shall connect accessible building or facility entrances with all accessible spaces and elements.

2010 ADAS Section 206.2.1

At least one accessible route shall be provided within the site from accessible parking spaces and accessible passenger loading zones; public streets and sidewalks; and public transportation stops to the accessible building or facility entrance they serve.

Citation:

2010 ADAS Section: 206.2.1

As Built:

There is not an accessible route to the front entrance from the parking.

Recommendation:

Add concrete panels between the sidewalk and flagpole to create an accessible path to the front entrance.

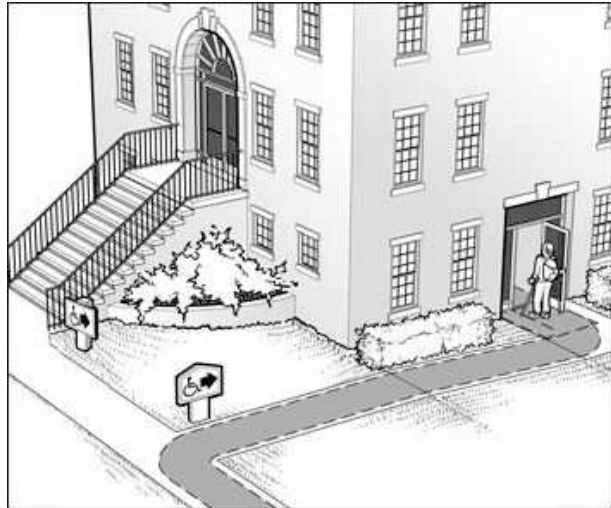
Barrier Priority:

1 (High): Should be completed immediately. (Includes findings that have little or no cost, were in violation of the codes at the time of construction, or pose an imminent safety threat)

Department:

CSFD

Finding #1 Continued



Finding #1 Additional Finding Photos



Finding 184970 Additional Photo

Exterior - Parking

Lat: 39.0208006000, Long: -104.8128991000

Finding: 2

The van stall is missing a sign identifying it as a van accessible stall.

Parking space identification signs shall include the International Symbol of Accessibility. Signs identifying van parking spaces shall contain the designation "van accessible."

2010 ADAS Section 502.6

Parking space identification signs shall include the International Symbol of Accessibility complying with 703.7.2.1. Signs identifying van parking spaces shall contain the designation "van accessible." Signs shall be 60 inches (1525 mm) minimum above the finish floor or ground surface measured to the bottom of the sign.

Citation:

2010 ADAS Section: 502.6

As Built:

There are two accessible spaces, but neither is signed as van accessible.

Recommendation:

Add van accessible signage to the left accessible parking space.

Barrier Priority:

1 (High): Should be completed immediately. (Includes findings that have little or no cost, were in violation of the codes at the time of construction, or pose an imminent safety threat)

Department:

CSFD



Finding #2 Additional Finding Photos



Finding 184971 Additional Photo

Interior - Men's Restroom

Lat: 39.0208006000, Long: -104.8128991000

Finding: 3

Accessible toilets must have grab bars installed.

The side grab bar must extend at least 54 inches minimum beyond the rear wall and start a maximum of 12 inches from the rear wall.

The rear grab bar must be a minimum of 36 inches long and extend from the centerline of the toilet 12 inches minimum on one side and 24 inches minimum on the other side.

Grab bars shall be installed in a horizontal position, 33 inches minimum and 36 inches maximum above the finish floor measured to the top of the gripping surface.

2010 ADAS Section 604.5

Grab bars for water closets shall comply with 609. Grab bars shall be provided on the side wall closest to the water closet and on the rear wall.

Citation:

2010 ADAS Section: 604.5

As Built:

The men's restroom does not have grab bars.

Recommendation:

Either add grab bars to this restroom, or designate both restrooms as unisex, and the current women's restroom as the accessible restroom.

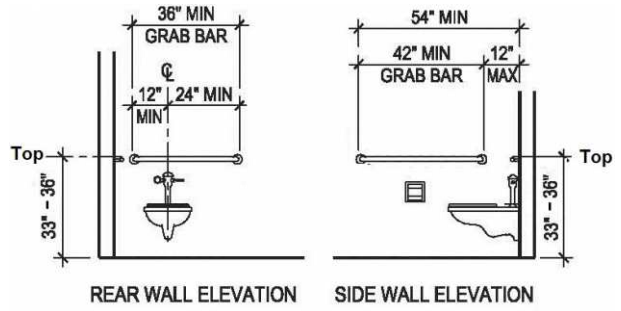
Barrier Priority:

3 (Moderate): Should be completed as soon as possible, but there may be other items that will provide greater access to persons with disabilities. (Includes findings that have a high financial impact on the entity in relationship to the degree of access provided)

Department:

CSFD

Finding #3 Continued



Interior - Men's Restroom

Lat: 39.0208006000, Long: -104.8128991000

Finding: 4

The paper towel dispenser's operation mechanism is too high off the floor.

Dispensers must have all operable parts a maximum of 48 inches above the floor.

2010 ADAS Section 308.2.1

Where a forward reach is unobstructed, the high forward reach shall be 48 inches (1220 mm) maximum and the low forward reach shall be 15 inches (380 mm) minimum above the finish floor or ground.

Citation:

2010 ADAS Section: 308.2.1

As Built:

The paper towel dispenser is mounted at 53" to the sensor.

Recommendation:

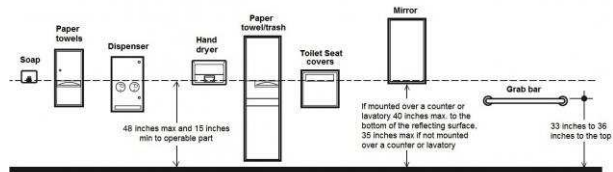
Lower the paper towel dispenser to 48" maximum to the sensor.

Barrier Priority:

3 (Moderate): Should be completed as soon as possible, but there may be other items that will provide greater access to persons with disabilities. (Includes findings that have a high financial impact on the entity in relationship to the degree of access provided)

Department:

CSFD



Interior - Men's Restroom

Lat: 39.0208006000, Long: -104.8128991000

Finding: 5

The soap dispenser's operation mechanism is too high off the floor.

Dispensers must have all operable parts a maximum of 48 inches above the floor.

2010 ADAS Section 308.2.1

Where a forward reach is unobstructed, the high forward reach shall be 48 inches (1220 mm) maximum and the low forward reach shall be 15 inches (380 mm) minimum above the finish floor or ground.

Citation:

2010 ADAS Section: 308.2.1

As Built:

The soap dispenser is mounted at 54" to the operable part.

Recommendation:

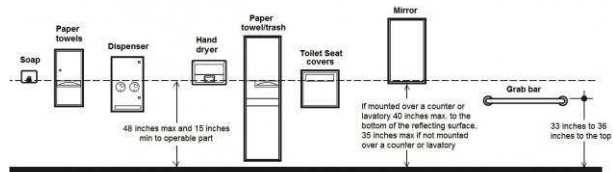
Lower the soap dispenser to 48" maximum to the operable part.

Barrier Priority:

3 (Moderate): Should be completed as soon as possible, but there may be other items that will provide greater access to persons with disabilities. (Includes findings that have a high financial impact on the entity in relationship to the degree of access provided)

Department:

CSFD



Interior - Women's Restroom

Lat: 39.0208006000, Long: -104.8128991000

Finding: 6

The paper towel dispenser's operation mechanism is too high off the floor.

Dispensers must have all operable parts a maximum of 48 inches above the floor.

2010 ADAS Section 308.2.1

Where a forward reach is unobstructed, the high forward reach shall be 48 inches (1220 mm) maximum and the low forward reach shall be 15 inches (380 mm) minimum above the finish floor or ground.

Citation:

2010 ADAS Section: 308.2.1

As Built:

The paper towel dispenser is mounted at 53" to the sensor.

Recommendation:

Lower the paper towel dispenser to 48" maximum to the sensor.

Barrier Priority:

3 (Moderate): Should be completed as soon as possible, but there may be other items that will provide greater access to persons with disabilities. (Includes findings that have a high financial impact on the entity in relationship to the degree of access provided)

Department:

CSFD

