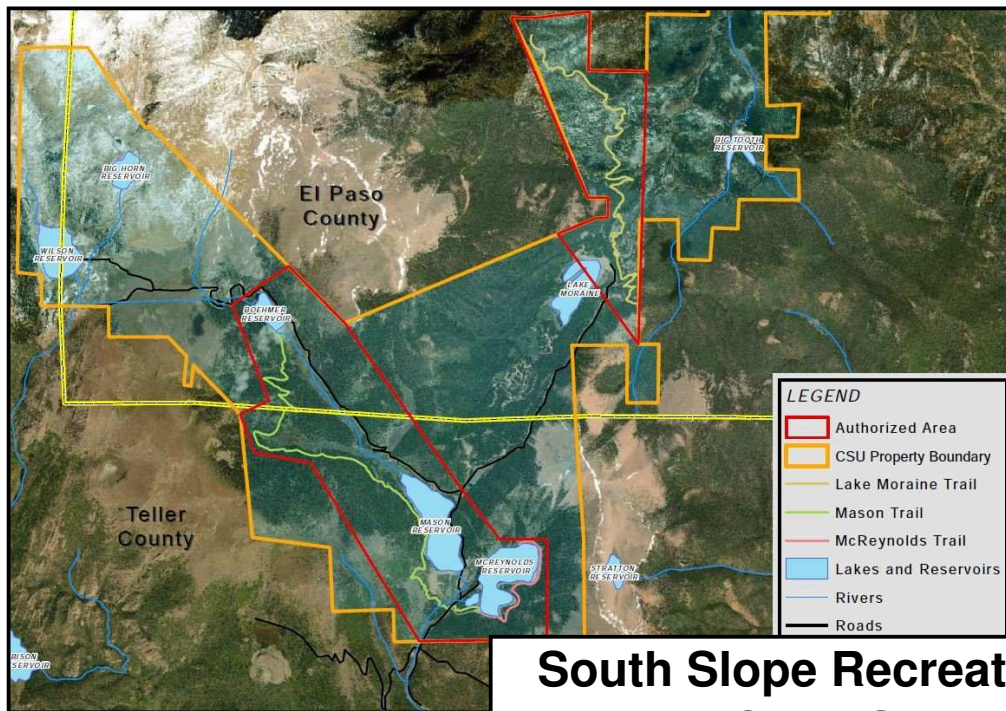


Site Accessibility Evaluation

Americans with Disabilities Act Title II (Public Services: State and Local Government)



South Slope Recreation Area Open Space

Forest Service Rd 376
Victor, CO 80829

Accessibility Evaluation

Inspection Date: 12/10/2020
Inspector: Michael Killebrew

Prepared By



OLYMPIC CITY USA

(719) 385 - 5175

<https://coloradosprings.gov/>

TO: Parks, Recreation and Cultural Services

FROM: Robert L. Hernandez

DATE: January 19, 2021

SUBJECT: South Slope Recreation Area Open Space Self-Evaluation

1. On December 10, 2020, Mr. Michael Killebrew, Title II ADA/Section 504 Coordinator performed a Title II - Americans with Disabilities Act (ADA), Self-Evaluation.

2. Priorities for accessibility are assigned in accordance with the ADA Checklist for Existing Facilities. The checklist follows the four priorities listed in the Department of Justice ADA Title III regulations. These priorities are equally applicable to state and local government facilities:

Priority 1 - Accessible approach and entrance

Priority 2 - Access to goods and services

Priority 3 - Access to public toilet rooms

Priority 4 - Access to other items such as water fountains and public telephones

3. Corrective actions to findings were/will be submitted for corrective action through the city maintenance work request system and Transition Plan. Note: Recommended corrections in some cases where needed will be modified when appropriate. Corrections are developed in consideration of the "Program Access" provisions of Title II, where applicable.

4. A copy of this report will be maintained in the Office of Accessibility.

City of Colorado Springs Title II ADA/Section 504 – Manager
30 S. Nevada Ave, Suite 301
Colorado Springs, CO 80903
robert.hernandez@coloradosprings.gov

Atch 1. City of Colorado Springs, ADA Self-Evaluation Report

Sincerely,



Robert Hernandez

South Slope Recreation Area

Lat: 38.7806776000, Long: -105.0121602000

Finding: 1

The walkway contains abrupt vertical edges and/or variations over a 1/4 inch.

1/4 inch is the maximum vertical rise. Changes in level between 1/4 inch and 1/2 inch must be beveled at 1:2 or less.

Changes in level greater than 1/2 inch must be by way of a ramp.

2010 ADAS Section 303.3

Changes in level between 1/4 inch (6.4 mm) high minimum and 1/2 inch (13 mm) high maximum shall be beveled with a slope not steeper than 1:2.

2010 ADAS Section 303.2

Changes in level of 1/4 inch (6.4 mm) high maximum shall be permitted to be vertical.

Citation:

2010 ADAS Section: 303.3, 303.2

As Built:

The entrance into the men's and women's restroom has greater than 1/4" vertical displacement within 5' of the door.

Recommendation:

Reduce vertical displacement to at or under 1/4".

Barrier Priority:

N/A

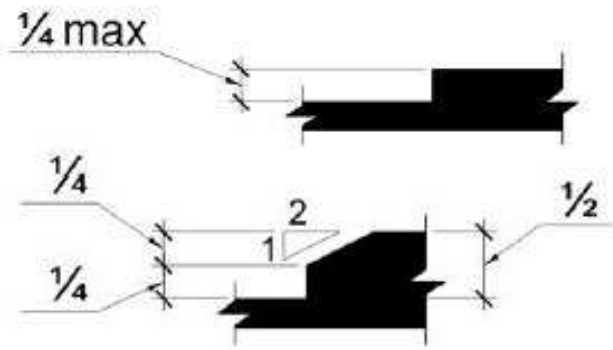
Department:

N/A

Notes:

We need to lower the slope from the door as well. The cost is to cover this as well.

Finding #1 Continued



South Slope Recreation Area

Lat: 38.7806776000, Long: -105.0121602000

Finding: 2

The maneuvering clearance at the door exceeds a 2% slope.

Maneuvering clearance must be flat (2% max. slope in any direction). The maneuvering clearance must also be clear of obstructions.

2010 ADAS Section 404.2.4.4

Floor or ground surface within required maneuvering clearances shall comply with 302. Changes in level are not permitted.

Citation:

2010 ADAS Section: 404.2.4.4

As Built:

The slope from the vertical displacement to the door exceeds 2%.

Recommendation:

Reduce to at or under 2% slope.

Barrier Priority:

N/A

Department:

N/A

Notes:

Cost is in the previous finding.

Finding #2 Continued

