

TRAILHEAD OPTIONS



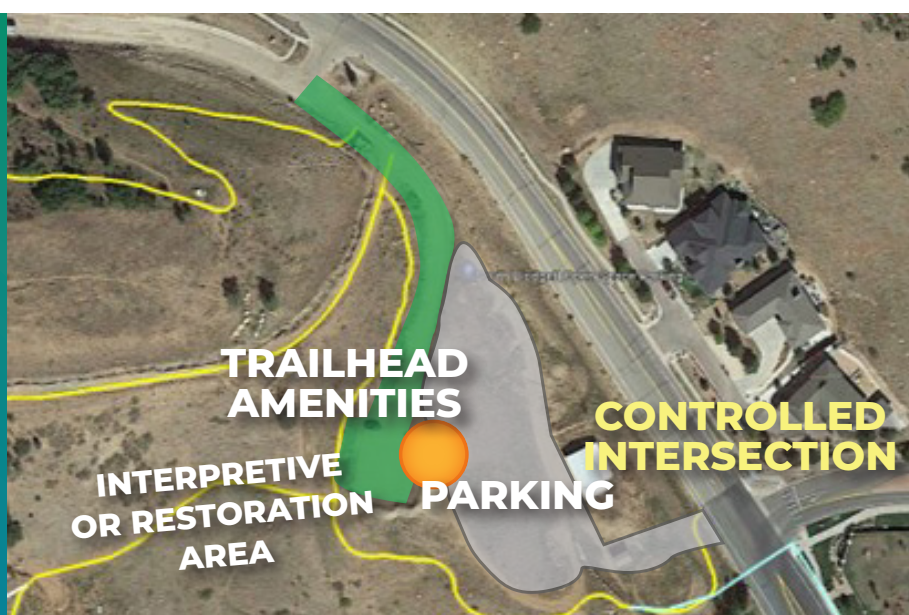
Expanded North Trailhead - a

1. Expanded Trailhead with parking – up to 31 spaces (20 new and 11 existing).
2. Mitigates and would not eliminate need for parking on W Woodmen Road.
3. Adds paving and traffic on current disturbed open land.
4. Nighttime gate at W Woodmen when BOS is closed
5. Trailhead remains close to some neighbors and easy parking on W Woodmen.



Relocated North Trailhead - b

1. Relocated Trailhead with parking – up to 60 spaces.
2. Mitigates and could eliminate need for parking on W Woodmen Road.
3. Restores existing parking area (11 spaces).
4. Adds paving and traffic on current disturbed open land.
5. Nighttime gate at W Woodmen when BOS is closed.
6. Distance from W Woodman may discourage nighttime nefarious activities.
7. Trailhead is removed from neighborhoods.
8. Additional trail system connections needed.



Orchard Valley Trailhead

1. Expanded Trailhead with parking – up to 60 spaces.
2. Removes derelict barn structures.
3. Future controlled intersection at W Woodmen/ Orchard Valley Road to enhance public safety (pedestrian and vehicular).
4. Location provides better surveillance from the public street.
5. Public surveillance mitigates nighttime nefarious activities.
6. Trailhead is closer to some neighbors and Centennial Blvd.
7. Opportunity to restore current parking area (13 spaces) and create an interpretive area.



New Quarry Trailhead

1. New Trailhead with parking – up to 250 spaces
2. Location accesses new southern areas of BOS and possible future bike park.
3. Possible “pre-leash walk” dog run area.
4. Nighttime gate at Allegheny when BOS is closed.
5. Distance from Allegheny Drive may discourage nighttime nefarious activities.
6. Trailhead is removed from neighborhoods.
7. Possible use of existing building for regional trailhead/interpretive center or parks maintenance use or future bike park support.
8. Trail system connections needed.

