

GREY HAWK PARK MASTER PLAN



Welcome.

The presentation will
begin at 5:30 pm.



New to Teams?

Please take time to find:

1. *Mute/Unmute.*
2. *Select 'People' function*
3. *Select 'Chat' function.*
4. *Find: 'Raise My Hand' (hand icon)*

Please stay muted until we get to Questions at the end of the presentation.

January 18, 2024 Neighborhood Meeting #3



TONIGHT'S AGENDA

Overview

Opportunities & Constraints

Public Feedback

Preliminary Concepts

Final Concept

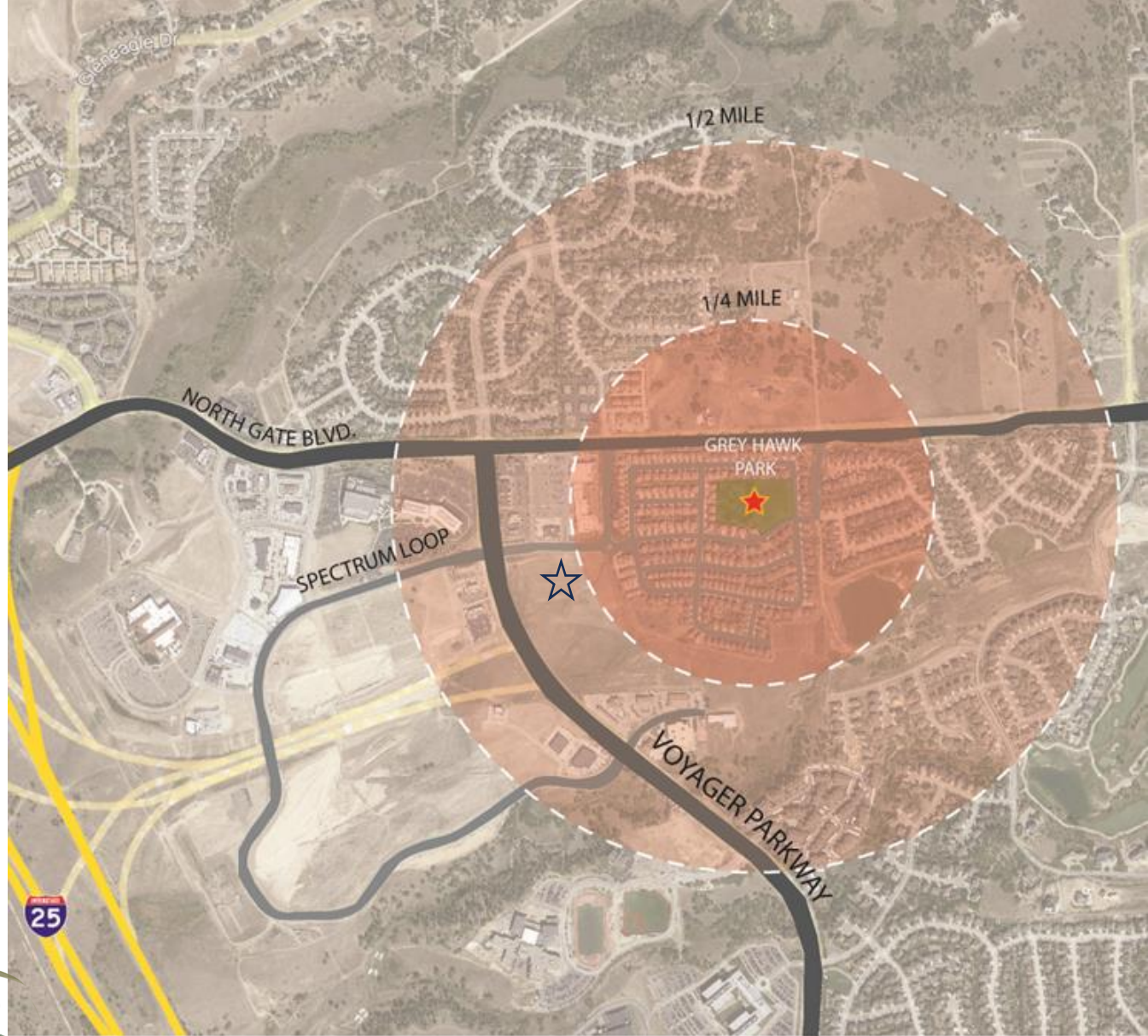
Discuss Next Steps

Final Questions



GREY HAWK PARK

- 4.47 ac Neighborhood Park
Lot 276 Grey Hawk at Northgate Filing No. 1
- Acquired: 2006 (PLDO)
- Frog's Leap Park (1/2 mi)
- Commercial uses to the west
- El Paso County residential (north)
- Future Powers Blvd Extension
- Northgate Open Space Areas
- Spectrum Loop Apartments ☆



GREY HAWK VICINITY MAP

MEETING #1 ONSITE MEETING & SURVEY



Neighborhood Meeting #1



SITE ANALYSIS

Existing Conditions:

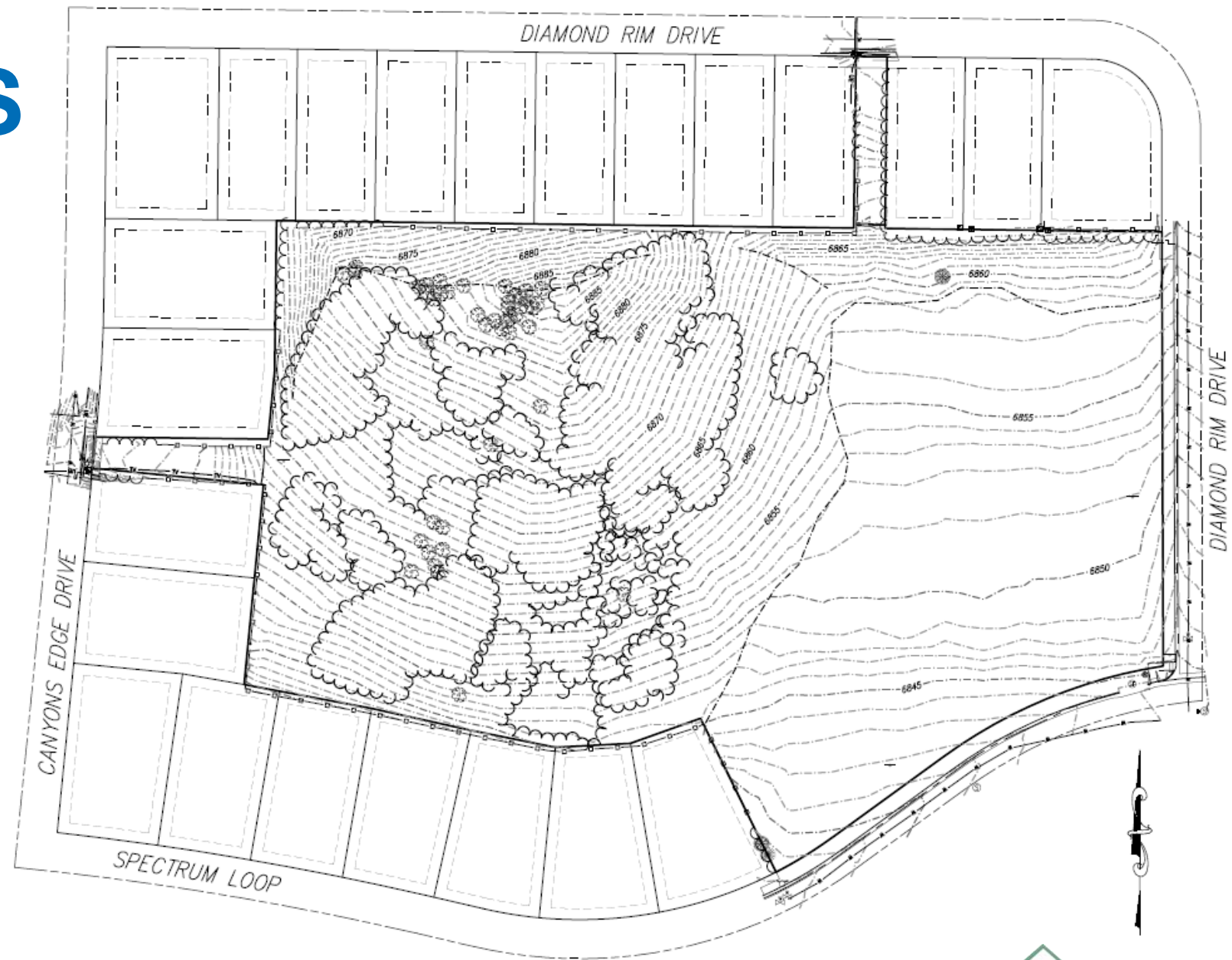
- Site Grade/Slopes:

 - HP: 6885 feet

 - LP: 6840 feet

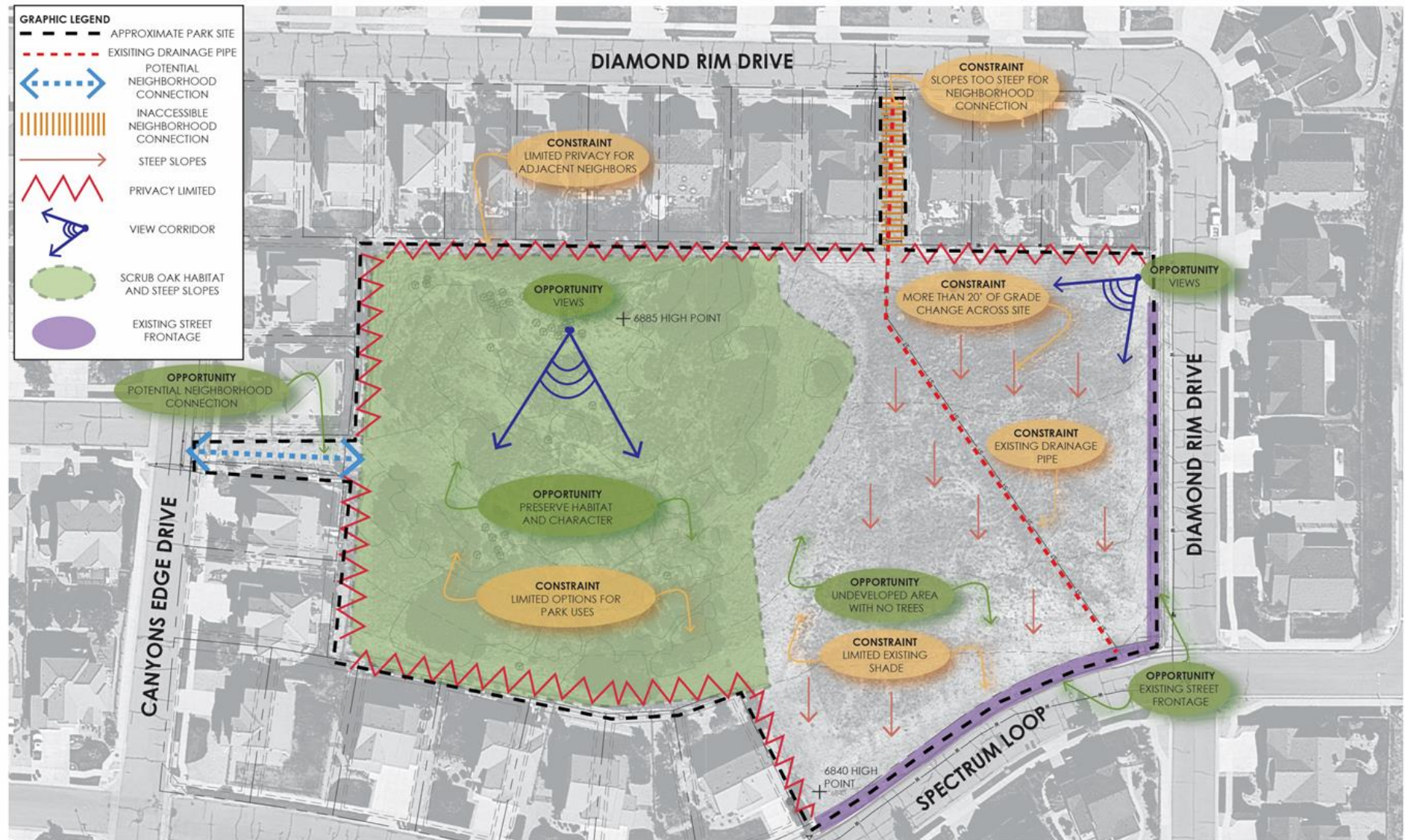
 - Elevation Change: 45 feet**

- Soils
- Views
- Existing Vegetation
- Disturbed Area
- Solar Access/Shade
- Access
- Existing Storm Drain
- Residential Lots
- USPS Mailbox



Existing Conditions:

- Site Grade/Slopes
- Soils
- Views
- Existing Vegetation
- Disturbed Area
- Solar Access/Shade
- Access
- Existing Storm Drain
- Residential Lots
- USPS Mailbox



OPPORTUNITIES AND CONSTRAINTS DIAGRAM

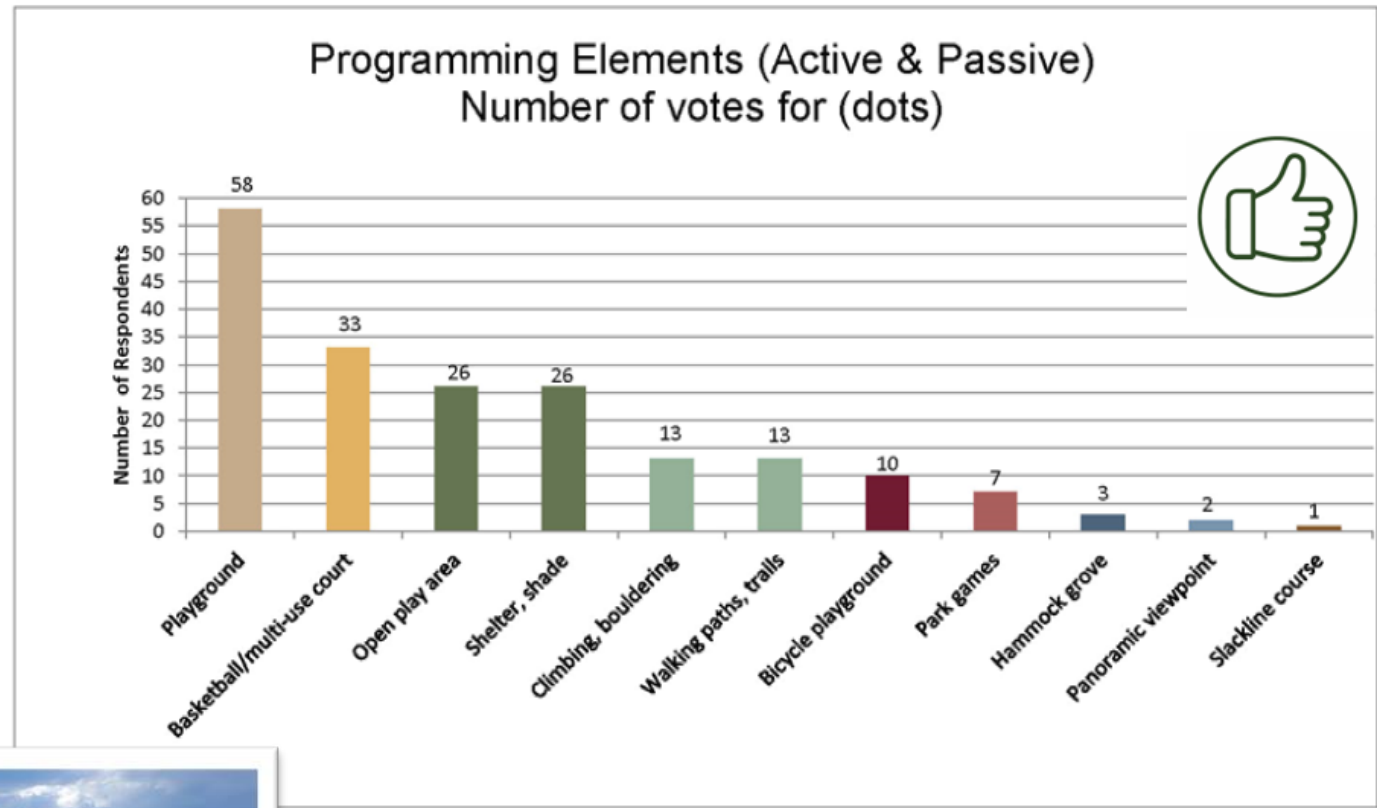
GREY HAWK PARK - COLORADO SPRINGS
OCTOBER 18TH, 2023



OUTREACH 1

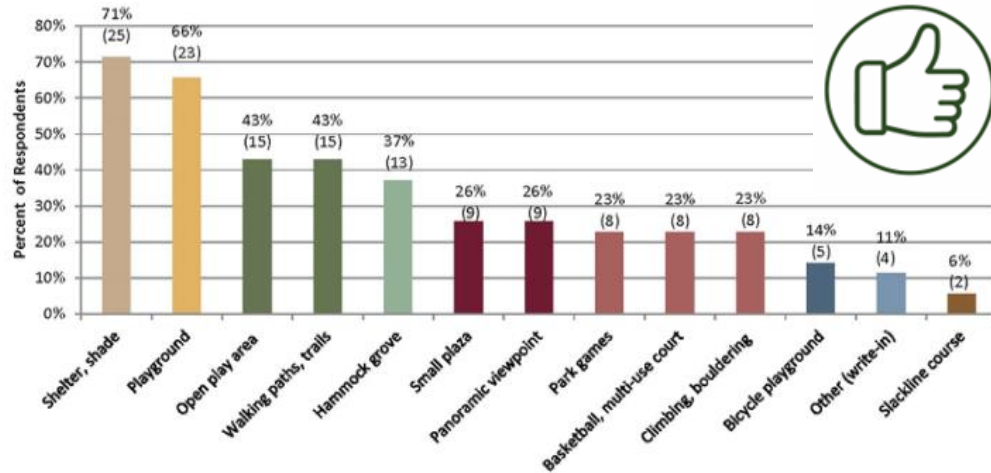
Dot Take Away: Active & Passive

1. Playground
2. Multi-use court
3. Open use area
4. Shade/shelter



5. Climbing
6. Walking paths, trails

Which of the following elements would you like to see included in the plan for Grey Hawk Park? (Choose up to 5)

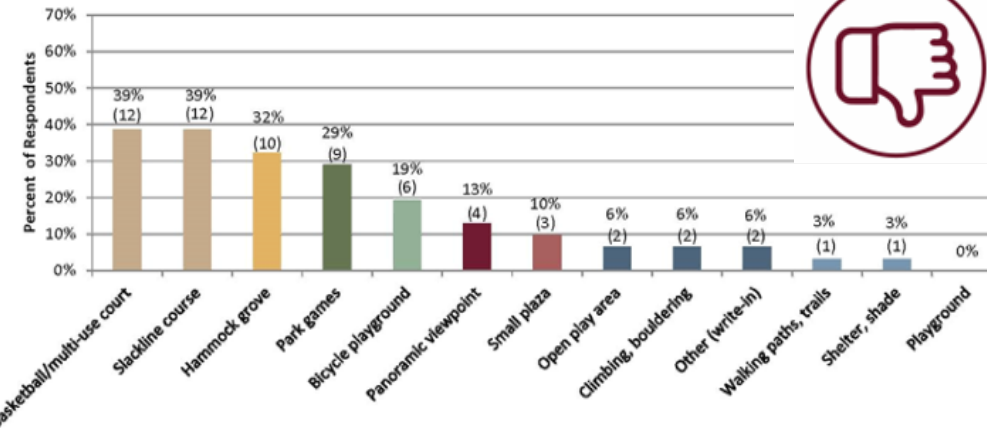


Write-in Responses:
-Pickleball court. -More natural looking elements. -Splash pad or water play area. -Small splash pad and dog park.

Survey: Like LEAST

1. Basketball
2. Slack Line Course
3. Hammock
4. Park Games
5. Bicycle playground

Which of the following elements would you NOT like to see included in the plan for Grey Hawk Park? (Choose up to 5)



Write-in Responses:
-No unused space we payed a premium to live next to the park. -No expansive fields that would draw more water, leave the landscape as natural as possible and put irrigation into a small pad for kids. Could meter the hours it's operational.

Survey: Like MOST

1. Shelter, Shade
2. Playground
3. Open use area
4. Walking paths, trails
5. Hammock grove

MEETING #2 CONCEPTS & SURVEY



Neighborhood Meeting #2



Concept A Features:

- Layout
- Playground
- Shelter
- Multi-use field space
- Slopes
- Storm drainpipe
- Soft surface trail
- No multi-use court



CONCEPT A SITE PLAN

GREY HAWK PARK - COLORADO SPRINGS
OCTOBER 18TH, 2023



INITIAL CONCEPT A



Concept B Features:

- Layout (flipped)
- Playground
- Shelter
- Multi-use field space
- Slopes
- Storm drainpipe
- Soft surface trail
- Multi-use court

Concept C Features:

- Layout
- Playground
- Shelter
- Multi-use field space
- Slopes
- Storm drainpipe
- Soft surface trail
- Multi-use court



CONCEPT C SITE PLAN

GREY HAWK PARK - COLORADO SPRINGS
OCTOBER 18TH, 2023



Concept D Features:

- Layout
- Playground
- Shelter
- Multi-use field space
- Slopes
- Storm drainpipe
- Soft surface trail
- Multi-use court



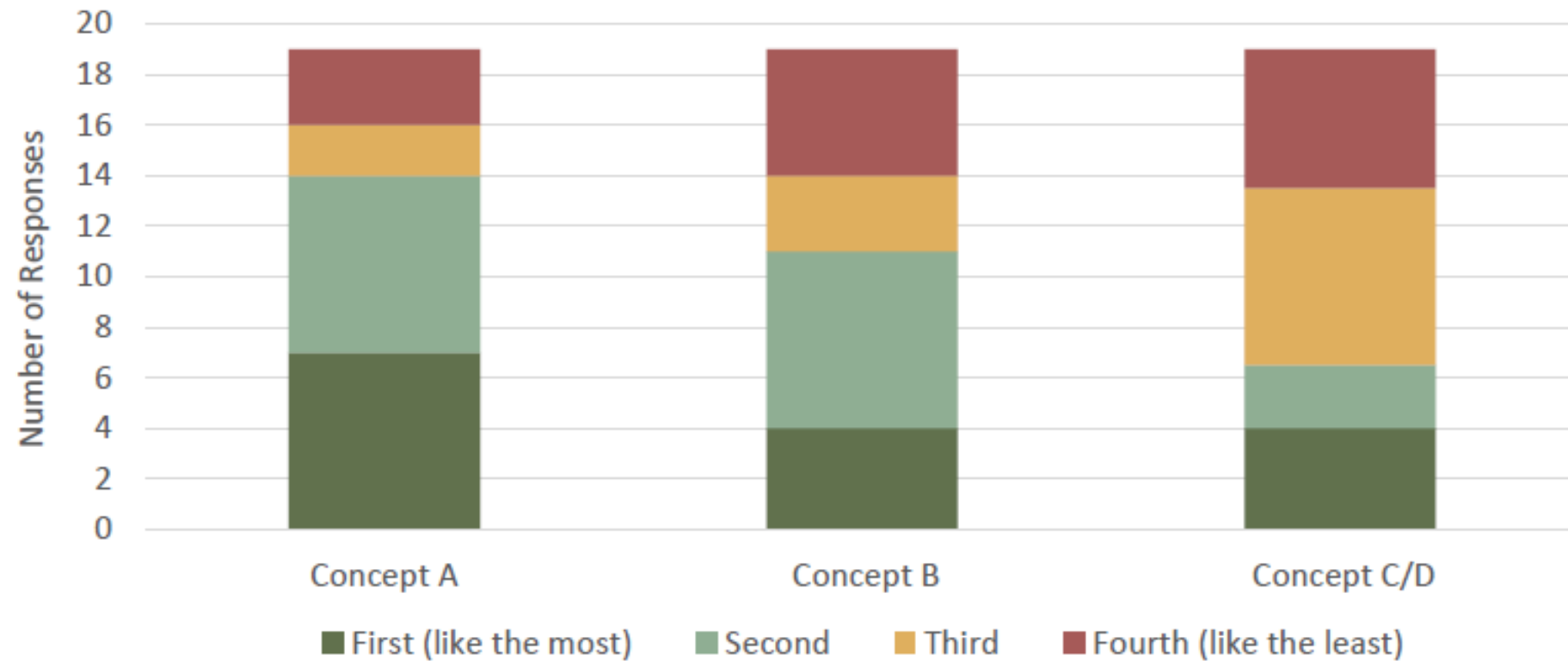
CONCEPT D SITE PLAN

GREY HAWK PARK - COLORADO SPRINGS
OCTOBER 18TH, 2023



CONCEPT RANKING

Ranking of Concepts



PLAY EQUIPMENT TYPES

NATURE THEMED



PLAY EQUIPMENT AND STYLE OPTIONS

GREY HAWK PARK - COLORADO SPRINGS
OCTOBER 18TH, 2023



PLAY EQUIPMENT TYPES

CHALLENGE COURSE



TRADITIONAL POST AND DECK



PLAY EQUIPMENT AND STYLE OPTIONS

GREY HAWK PARK - COLORADO SPRINGS
OCTOBER 18TH, 2023



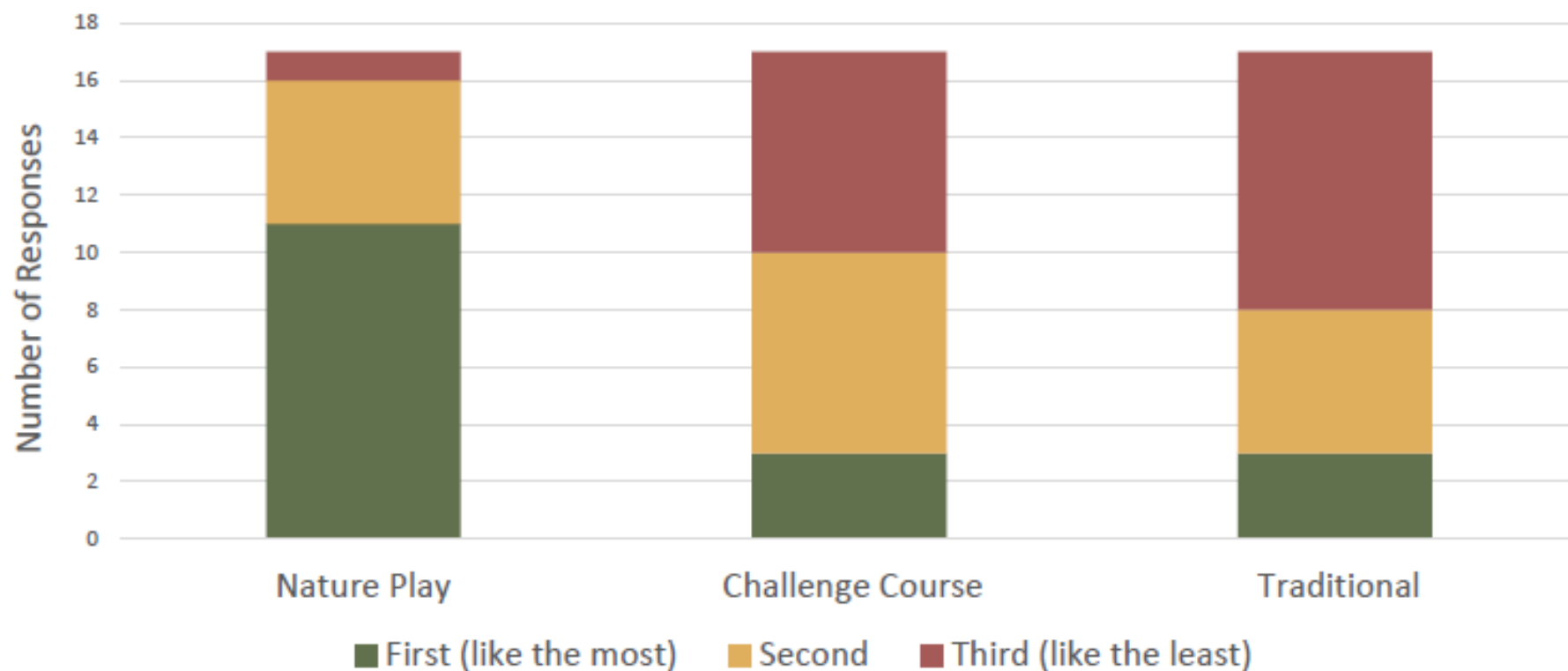
PLAY EQUIPMENT TYPE RANKING

17 Respondents

Play Equipment Type:

1. Nature
2. Challenge
3. Traditional

Ranking of Play Equipment



MEETING #3 FINAL CONCEPT





FINAL CONCEPT PLAN

GREY HAWK PARK - COLORADO SPRINGS
JANUARY 18TH, 2024





Concept B Features:

- Layout
- Playground (7,100 sf)
- Shelter (25'x35')
- Multi-use field space (50 x 25 yds) / (0.6 acres/26,136 sf)
- Slopes
- Storm drainpipe
- Soft surface trail
- Multi-use court (games)
- Walking Loop



CONCEPT B SITE PLAN

GREY HAWK PARK - COLORADO SPRINGS
OCTOBER 18TH, 2023



FINAL DESIGN

Features:

- Layout
- Playground (6500 sf)
- Shelter (15' x 20')
- Multi-use field space (0.6 ac, 26,136 sf)
- Slopes
- Storm drainpipe
- Multi-use court
- Entry/Access
- Walking Loops:
 - Concrete
 - Soft Surface Trail (Width and Distances)
- Landscape/Conservation



FUNDING SNAPSHOT



CONSTRUCTION - EARLY ESTIMATE (W/ Contingency)*		\$	2,200,000
2024 Budget Approved		\$	1,000,000
		\$	(1,000,000)
	Subtotal	\$	1,200,000
POTENTIAL FUNDING - IN PROGRESS			
2023 General Budget Savings		\$	400,000
			(\$400,000)
2024 Parkland Dedication Alternative Compliance Agreement		\$	400,000
			(\$400,000)
2025 Budget Request - TBD		\$	400,000
			(\$400,000)
		\$	-

* Cost Savings sought through Future Phases: Final Design, Construction Proposals, and Construction.



GREY HAWK PARK MASTER PLAN



NEXT STEPS:

MASTER PLAN APPROVAL:

- PRCS Advisory Board – Approval**
- TOPS Working Committee – Project Update

2024

- Final Design / Construction Documents (6-8 months)
- Request for Proposals / Contractor (3-4 months)

2025

Construction 2025 (TBD, Approx. 8 -10 months)



Advisory Board

Two Meetings:

1. Presentation, Feb 8th
2. Action, March 14th

January 18, 2024 Neighborhood Meeting #3



GREY HAWK PARK MASTER PLAN



QUESTIONS



We will take questions in this order:

1. *In-Person*
2. *Online Chat*
3. *Online Raise your Hand to speak.*