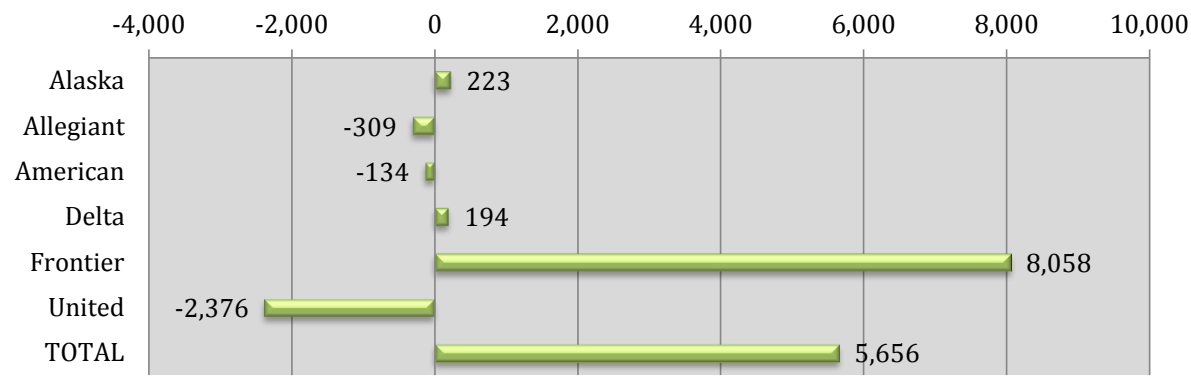


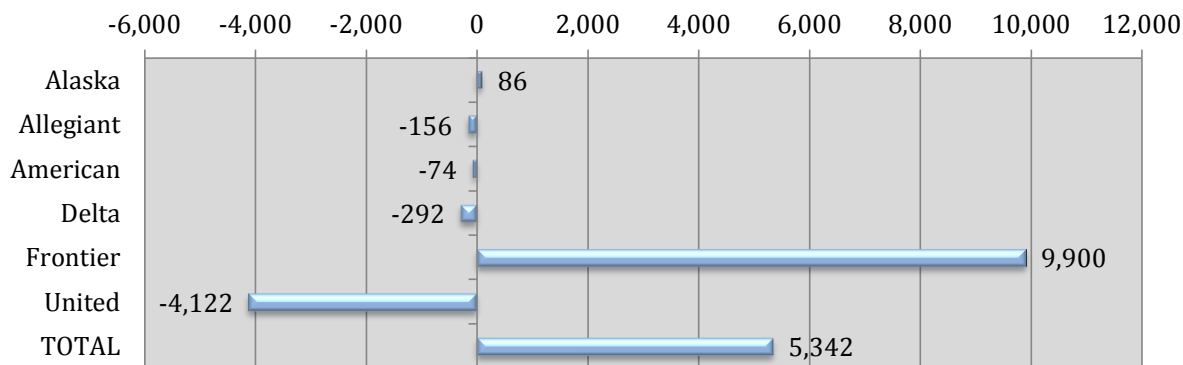
Monthly Reported Enplaned Passengers YOY Δ



	REPORTED MONTH			
	Oct-16	Oct-15	YOY Δ	% Δ

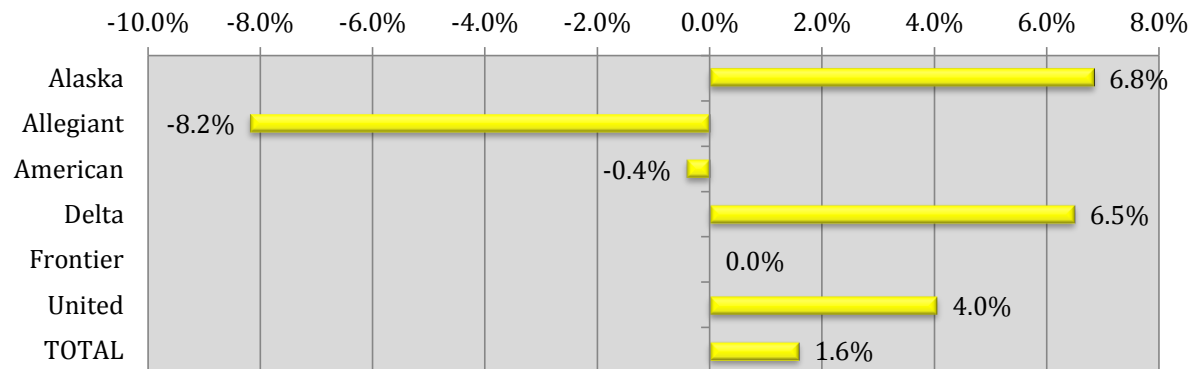
PASSENGERS				
Alaska	1,961	1,738	223	12.8%
Allegiant	1,665	1,974	-309	-15.7%
American	14,722	14,856	-134	-0.9%
Delta	6,552	6,358	194	3.1%
Frontier	8,058	0	8,058	-
United	25,188	27,564	-2,376	-8.6%
TOTAL	58,146	52,490	5,656	10.8%

Monthly Reported Seats YOY Δ



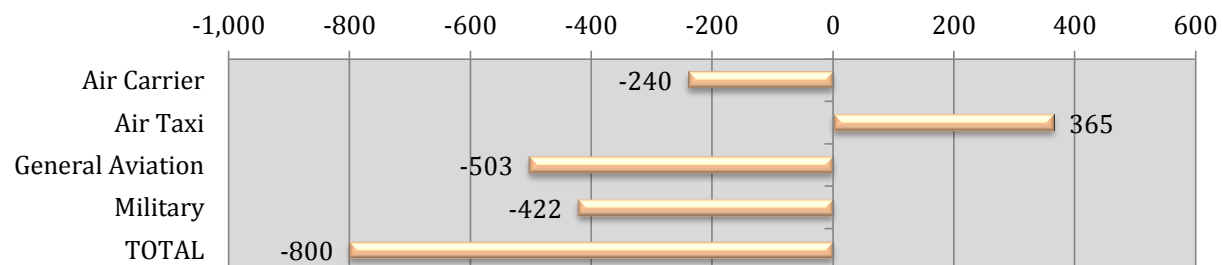
SEATS				
Alaska	2,256	2,170	86	4.0%
Allegiant	2,138	2,294	-156	-6.8%
American	16,769	16,843	-74	-0.4%
Delta	6,946	7,238	-292	-4.0%
Frontier	9,900	0	9,900	-
United	28,196	32,318	-4,122	-12.8%
TOTAL	66,205	60,863	5,342	8.8%

Monthly Reported Load Factor YOY Δ

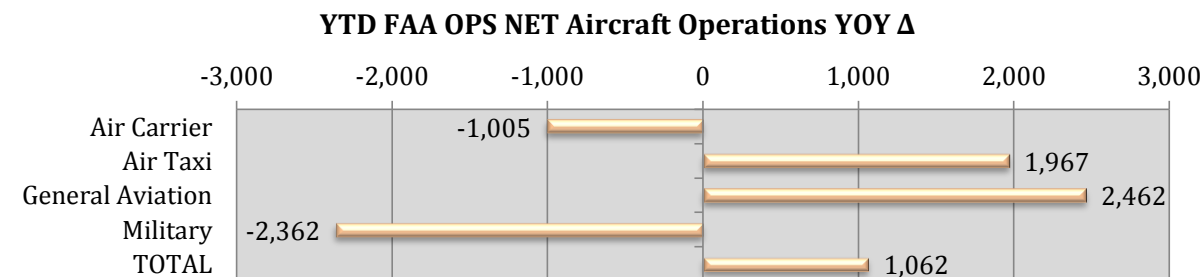
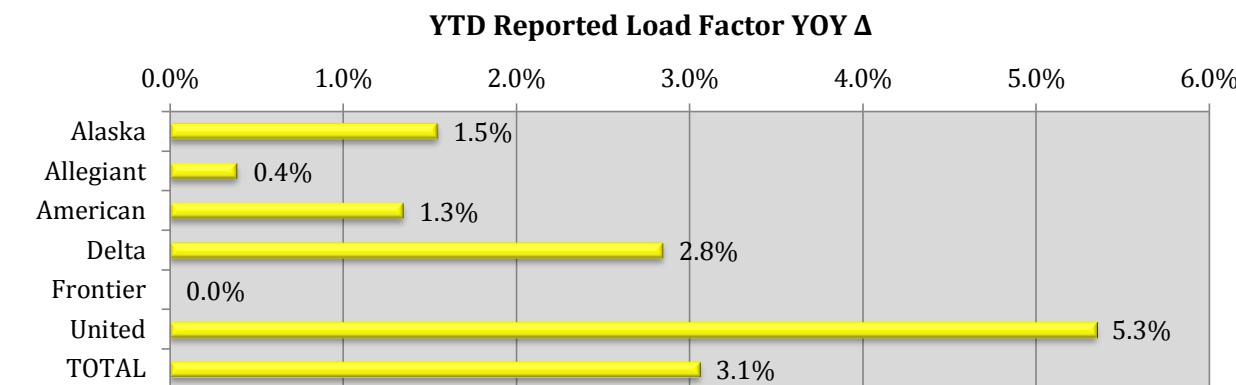
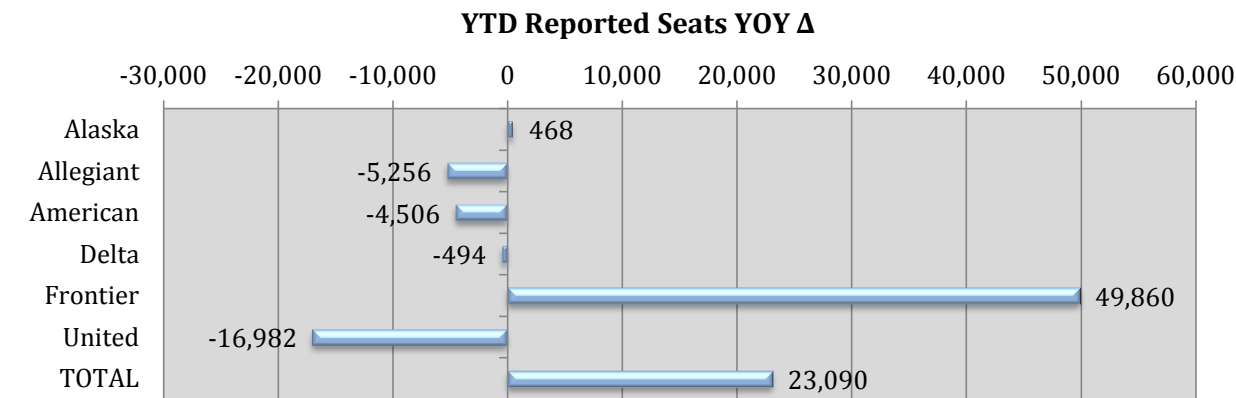
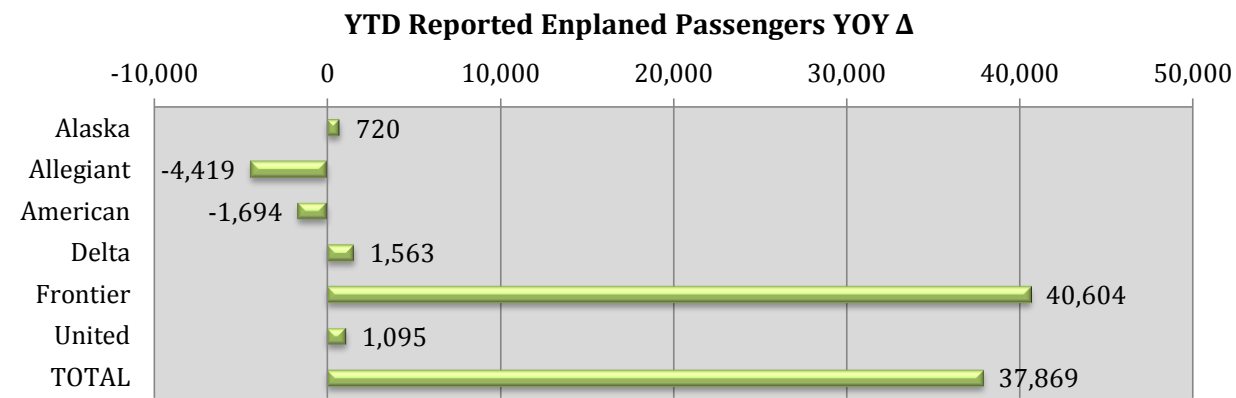


LOAD FACTOR				
Alaska	86.9%	80.1%	-	6.8%
Allegiant	77.9%	86.1%	-	-8.2%
American	87.8%	88.2%	-	-0.4%
Delta	94.3%	87.8%	-	6.5%
Frontier	81.4%	-	-	-
United	89.3%	85.3%	-	4.0%
TOTAL	87.8%	86.2%	-	1.6%

Monthly FAA OPS NET Aircraft Operations YOY Δ



OPERATIONS				
Air Carrier	1,089	1,329	-240	-18.1%
Air Taxi	1,185	820	365	44.5%
General Aviation	4,978	5,481	-503	-9.2%
Military	3,591	4,013	-422	-10.5%
TOTAL	10,843	11,643	-800	-6.9%



	REPORTED YEAR-TO-DATE			
	YTD 2016	YTD 2015	YOY Δ	% Δ
PASSENGERS				
Alaska	18,143	17,423	720	4.1%
Allegiant	24,300	28,719	-4,419	-15.4%
American	138,372	140,066	-1,694	-1.2%
Delta	65,411	63,848	1,563	2.4%
Frontier	40,604	0	40,604	-
United	238,984	237,889	1,095	0.5%
TOTAL	525,814	487,945	37,869	7.8%

	YTD 2016	YTD 2015	YOY Δ	% Δ
SEATS				
Alaska	21,408	20,940	468	2.2%
Allegiant	28,080	33,336	-5,256	-15.8%
American	159,643	164,149	-4,506	-2.7%
Delta	70,524	71,018	-494	-0.7%
Frontier	49,860	0	49,860	-
United	277,290	294,272	-16,982	-5.8%
TOTAL	606,805	583,715	23,090	4.0%

	YTD 2016	YTD 2015	YOY Δ	% Δ
LOAD FACTOR				
Alaska	84.7%	83.2%	-	1.5%
Allegiant	86.5%	86.2%	-	0.4%
American	86.7%	85.3%	-	1.3%
Delta	92.7%	89.9%	-	2.8%
Frontier	81.4%	-	-	-
United	86.2%	80.8%	-	5.3%
TOTAL	86.7%	83.6%	-	3.1%

	YTD 2016	YTD 2015	YOY Δ	% Δ
OPERATIONS				
Air Carrier	10,685	11,690	-1,005	-8.6%
Air Taxi	10,216	8,249	1,967	23.8%
General Aviation	52,158	49,696	2,462	5.0%
Military	37,867	40,229	-2,362	-5.9%
TOTAL	110,926	109,864	1,062	1.0%