

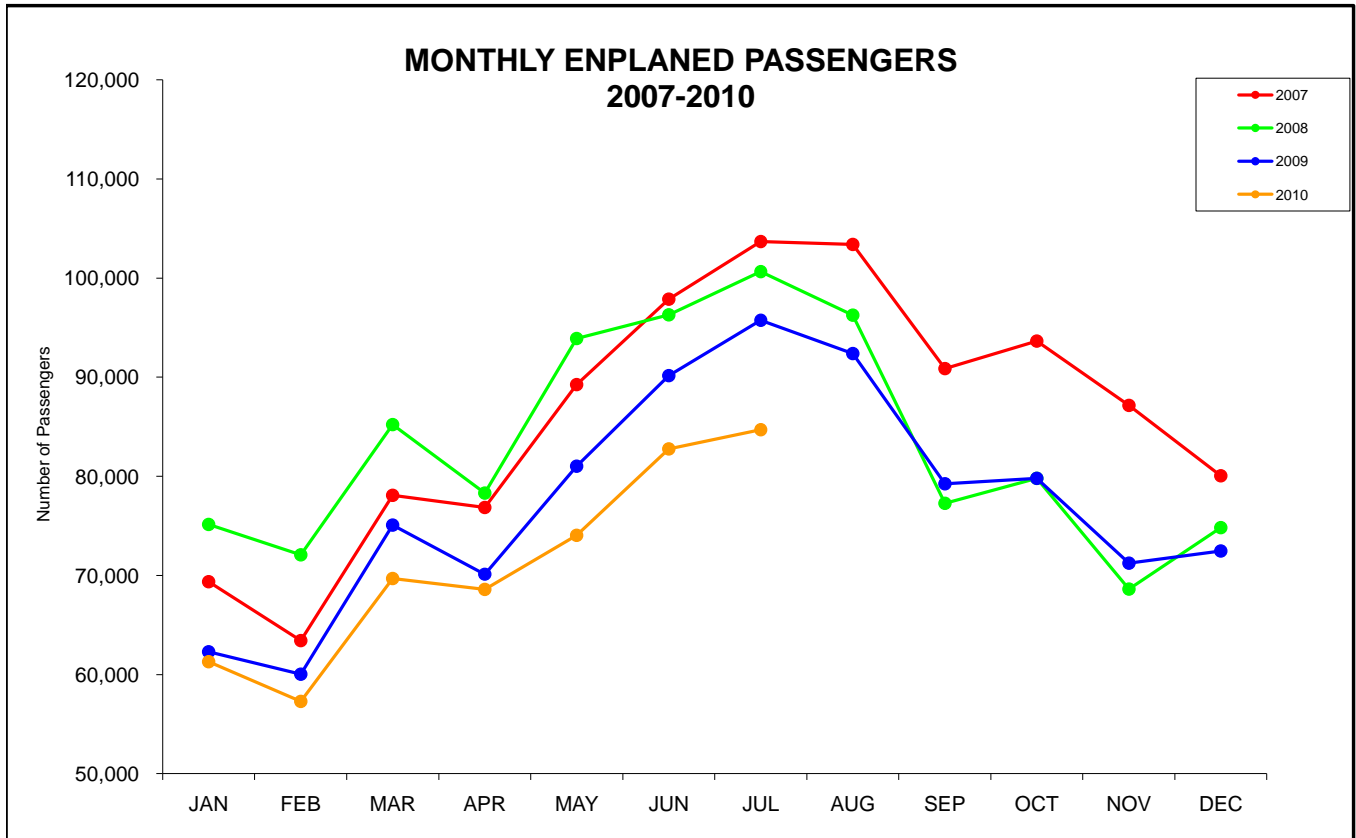
SUMMARY OF ENPLANED PASSENGERS

Colorado Springs Airport

	Month			Year-to-date		
	Jul-10	Jul-09	Percent change	2010	2009	Percent change
Enplaned passengers by Airline						
Scheduled Carriers						
Allegiant Air	3,084	3,256	-5.3%	19,369	20,127	-3.8%
American/American Connection	22,448	23,135	-3.0%	114,715	115,169	-0.4%
Continental/Cont Express (a)	6,390	6,419	-0.5%	40,285	40,837	-1.4%
Delta /Delta Connection (b)	13,590	15,594	-12.9%	75,193	82,637	-9.0%
Frontier/Lynx Aviation (e)	10,448	10,860	-3.8%	61,428	53,582	14.6%
US Airways (c)	0	5,686	N/A	517	42,936	N/A
United/United Express (d)	28,746	30,800	-6.7%	186,439	178,632	4.4%
Total	84,706	95,750	-11.5%	497,946	533,920	-6.7%
Charters						
Other Charters	0	0	0.0%	420	555	-24.3%
Total	0	0	0.0%	420	555	-24.3%
Total enplaned passengers						
	84,706	95,750	-11.5%	498,366	534,475	-6.8%
Total deplaned passengers						
	86,199	99,109	-13.0%	496,519	535,685	-7.3%

- (a) Continental Express provided by ExpressJet.
- (b) Delta Connection provided by SkyWest and Mesaba.
- (c) US Airways provided by Mesa Air Group.

- (d) United Express provided by Mesa Air Group, SkyWest, and ExpressJet.
- (e) Service also provided by Republic Airways and Midwest



SUMMARY OF LANDED WEIGHT

Colorado Springs Airport

Landed weight by Airline	Month			Year-to-date		
	Jul-10	Jul-09	Percent change	2010	2009	Percent change
Scheduled Carriers						
Allegiant Air	3,050,000	3,336,500	-8.6%	19,929,500	20,972,500	-5.0%
American /American Connection	23,068,500	23,068,500	0.0%	135,583,500	135,865,500	-0.2%
Continental/Cont Express (a)	8,756,470	6,613,800	32.4%	47,853,748	43,491,899	10.0%
Delta/Delta Connection (b)	14,900,267	12,911,200	15.4%	82,883,377	78,941,300	5.0%
Frontier/Lynx Aviation (e)	13,634,550	11,115,000	22.7%	81,813,598	68,295,500	19.8%
US Airways (c)	0	6,434,000	N/A	517,000	45,763,500	N/A
United/United Express (d)	36,395,362	36,533,500	-0.4%	228,330,414	222,012,000	2.8%
Total	99,805,149	100,012,500	-0.2%	596,911,137	615,342,199	-3.0%
Cargo	9,213,000	7,619,000	20.9%	57,751,000	51,194,000	12.8%
Charter						
Other Charters	124,000	0	n.a.	515,500	992,000	-48.0%
Total	124,000	0	n.a.	515,500	992,000	-48.0%
Total landed weight	109,142,149	107,631,500	1.4%	655,177,637	667,528,199	-1.9%

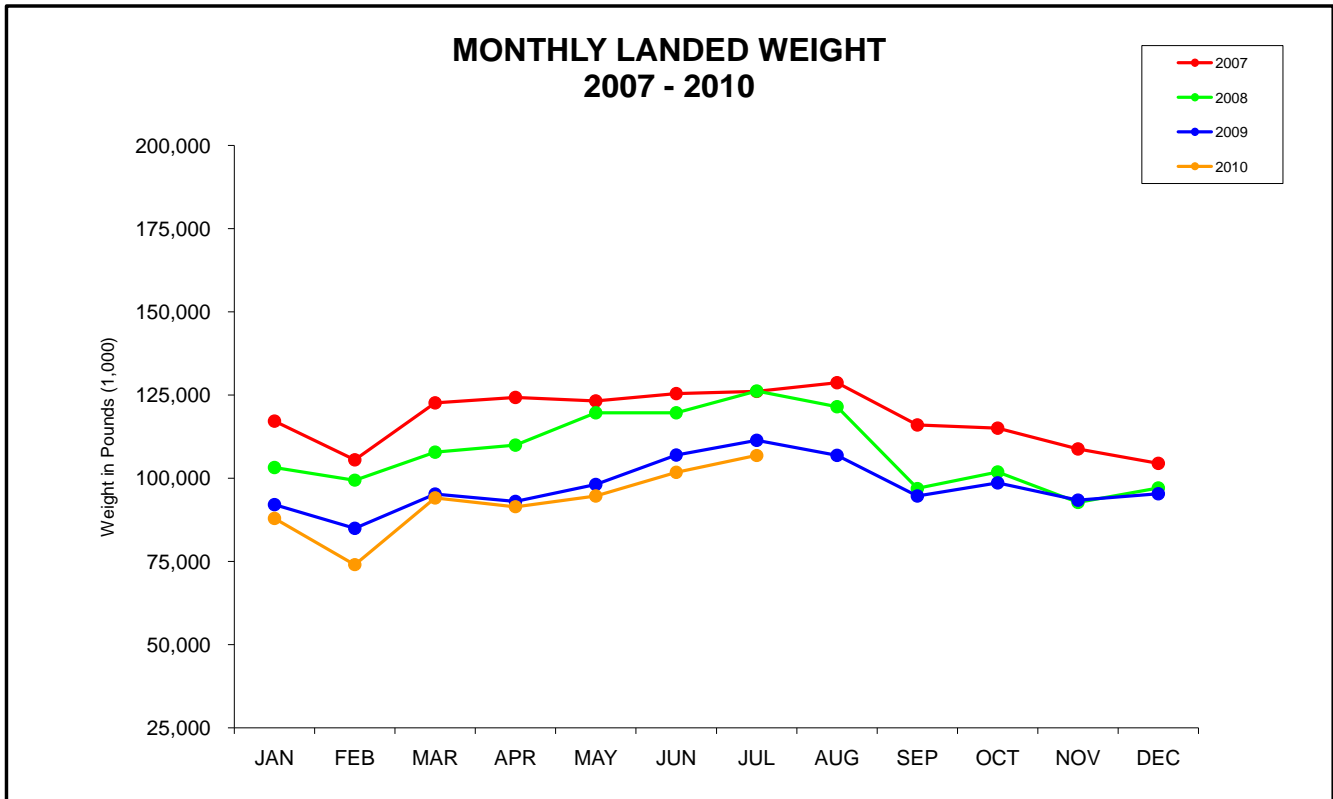
(a) Continental Express provided by ExpressJet.

(b) Delta Connection provided by SkyWest, Mesaba and Shuttle America.

(c) US Airways provided by Mesa Air Group.

(d) United Express provided by Mesa Air Group, SkyWest, and ExpressJet.

(e) Service also provided by Republic Airways and Midwest



SUMMARY OF FREIGHT AND MAIL

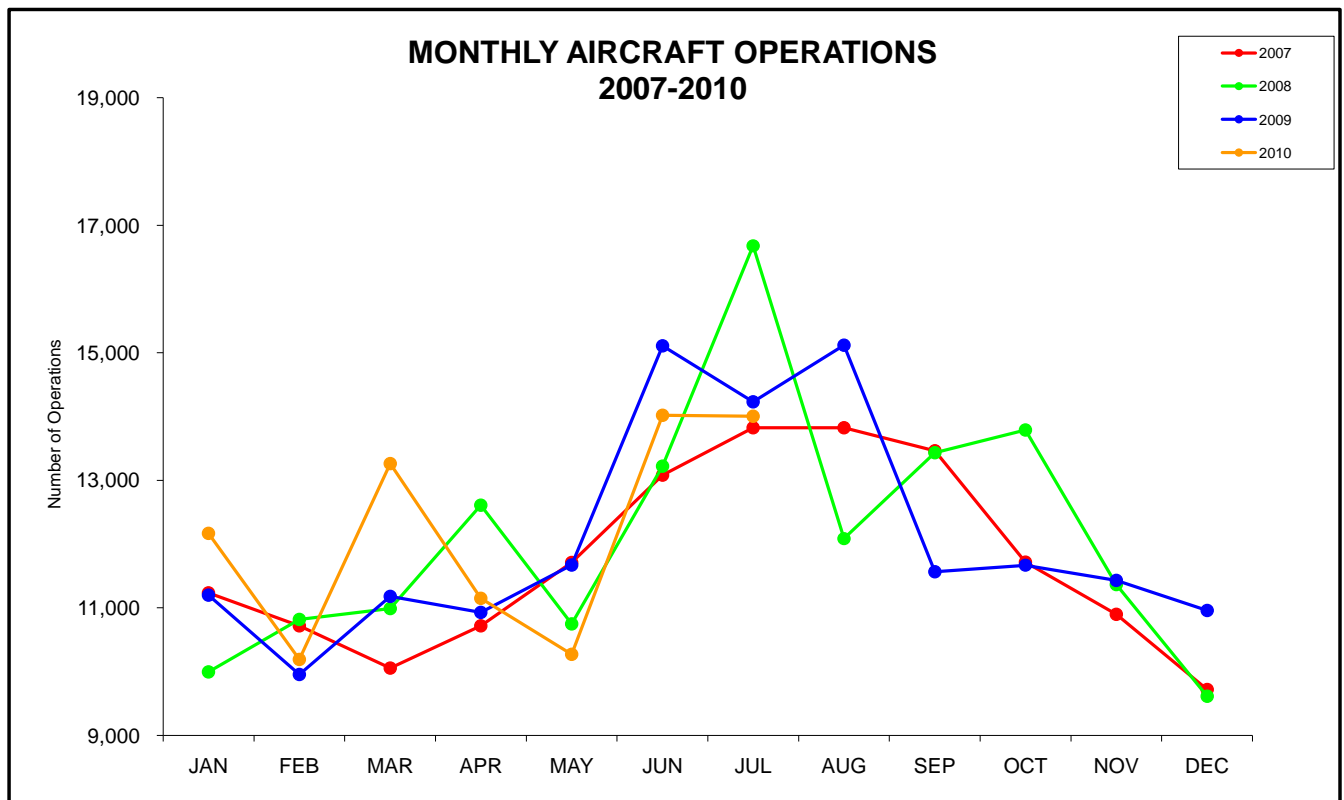
Colorado Springs Airport

	Month			Year-to-date		
	Jul-10	Jul-09	Percent change	2010	2009	Percent change
Freight/Cargo/Mail (lbs)						
Enplaned Freight/Cargo	1,141,372	660,505	72.8%	6,650,027	4,979,507	33.5%
Enplaned Mail	0	0	N/A	0	0	N/A
Deplaned Freight/Cargo	783,820	1,458,665	-46.3%	6,303,095	7,831,888	-19.5%
Deplaned Mail	0	105	N/A	633	115	N/A
Total Freight/Cargo/Mail (lbs)						
	1,925,192	2,119,275	-9.2%	12,953,755	12,811,510	1.1%

SUMMARY OF AIRCRAFT OPERATIONS

Colorado Springs Airport

	Month			Year-to-date		
	Jul-10	Jul-09	Percent change	2010	2009	Percent change
Aircraft Operations						
Air Carrier	1,819	1,991	-8.6%	11,518	11,769	-2.1%
Air Taxi	1,655	1,780	-7.0%	10,077	10,505	-4.1%
General Aviation	6,037	7,015	-13.9%	35,565	39,708	-10.4%
Military	4,493	3,444	30.5%	27,902	22,289	25.2%
Total Aircraft Operations						
	14,004	14,230	-1.6%	85,062	84,271	0.9%

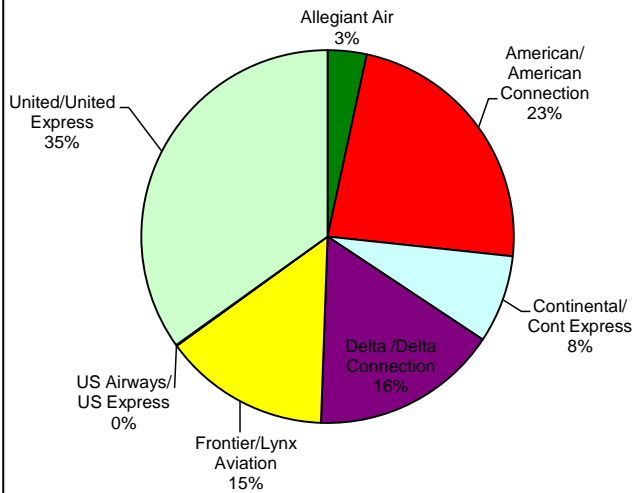


SUMMARY OF AIRLINE LOAD FACTORS

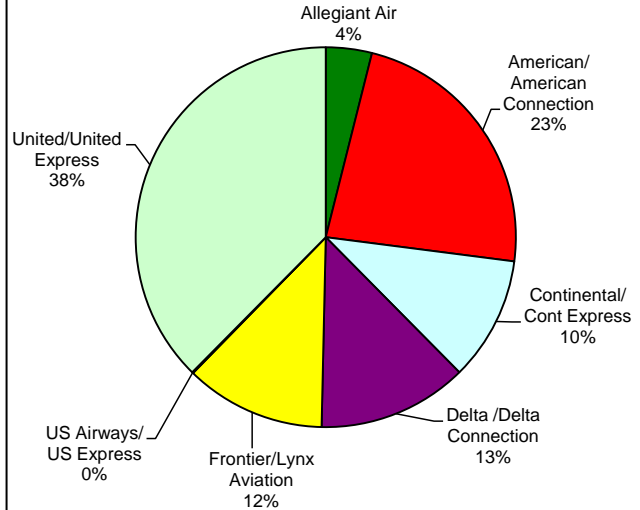
Colorado Springs Airport

Airline	July				Year-to-date			
	2010			2009	2010			2009
	Seats Available	Actual Enplaned	Load Factor	Load Factor	Seats Available	Actual Enplaned	Load Factor	Load Factor
Scheduled Carriers								
Allegiant Air	3,300	3,084	93.5%	84.8%	21,730	19,369	89.1%	88.2%
American	25,200	22,448	89.1%	81.6%	150,080	114,715	76.4%	70.9%
Continental/ Cont Express	7,300	6,390	87.5%	85.7%	49,100	52,460	106.8%	82.1%
Delta /Delta Connection	15,852	13,590	85.7%	87.5%	107,130	63,018	58.8%	81.9%
Frontier/Lynx Aviation	14,720	10,448	71.0%	72.3%	93,028	61,428	66.0%	61.4%
US Airways	0	0	N/A	N/A	550	517	94.0%	85.0%
United/United Express	37,076	28,746	77.5%	84.0%	224,585	186,439	83.0%	77.0%
Total Airline	103,448	84,706	81.9%	83.2%	646,203	497,946	77.1%	76.0%
Charters								
Other Charters	150	0	N/A	N/A	300	420	N/A	N/A

AMOUNT OF SEATS AVAILABLE YTD



% OF ENPLANEMENTS YTD



SUMMARY OF AIRLINE SEATS AVAILABLE

Colorado Springs Airport

Airline	Month			Year-to-date		
	Jul-10	Jul-09	Percent change	2010	2009	Percent change
Scheduled Carriers						
Allegiant Air	3,300	3,580	-7.8%	21,730	22,490	-3.4%
American/American Connection	25,200	25,200	0.0%	150,080	150,096	0.0%
Continental/ Cont Express	7,300	7,500	-2.7%	49,100	49,200	-0.2%
Delta /Delta Connection	15,852	17,534	-9.6%	107,130	97,428	10.0%
Frontier/Lynx Aviation	14,720	13,320	10.5%	93,028	79,524	17.0%
US Airways	0	6,954	N/A	550	50,798	N/A
United/United Express	37,076	37,119	-0.1%	224,585	226,028	-0.6%
Total Airline	103,448	111,207	-7.0%	646,203	675,564	-4.3%
Charters						
Other Charters	150	0	N/A	300	750	-60.0%

