

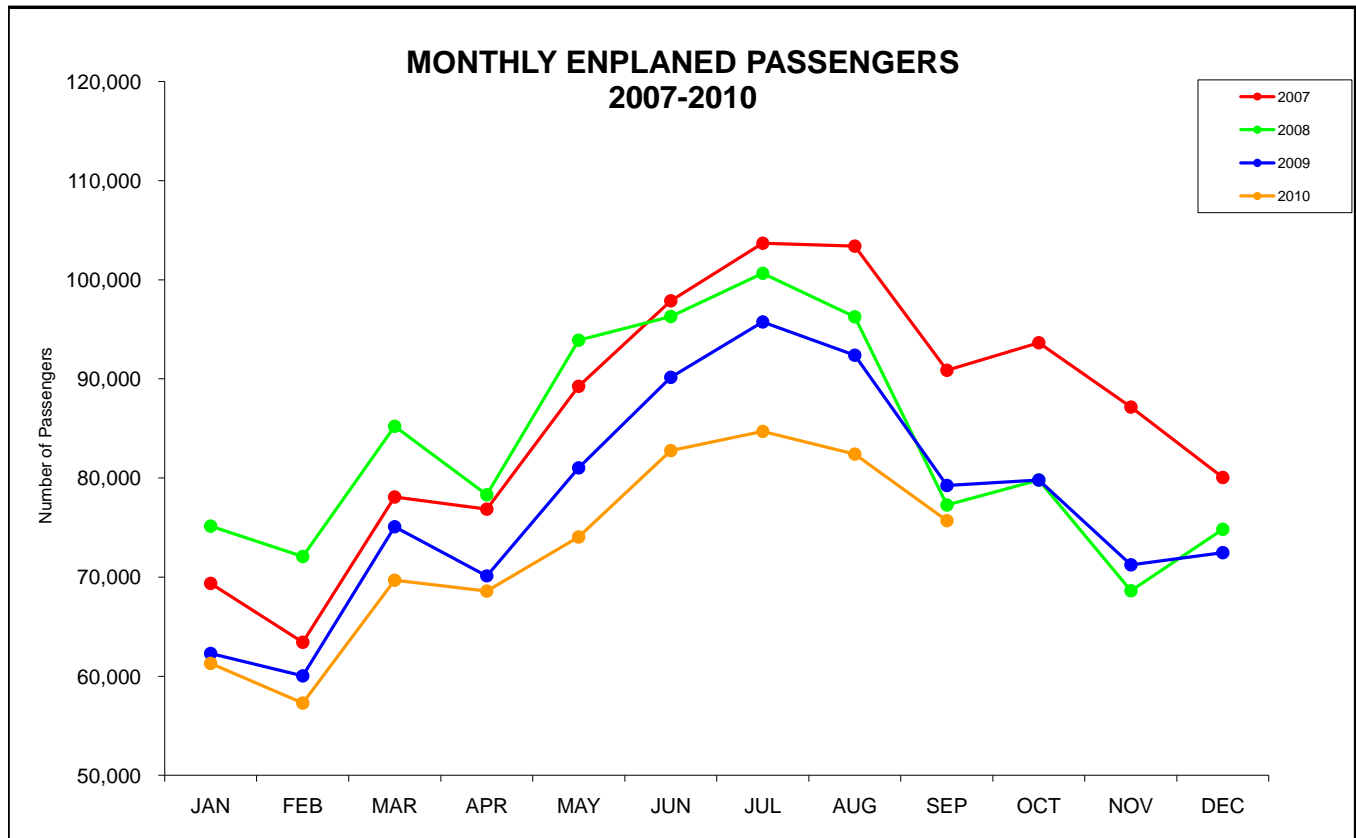
SUMMARY OF ENPLANED PASSENGERS

Colorado Springs Airport

Enplaned passengers by Airline	Month			Year-to-date		
	Sep-10	Sep-09	Percent change	2010	2009	Percent change
Scheduled Carriers						
Allegiant Air	3,736	2,653	40.8%	26,078	25,420	2.6%
American/American Connection	16,651	19,213	-13.3%	152,077	156,952	-3.1%
Continental/Cont Express (a)	5,560	5,947	-6.5%	52,170	53,438	-2.4%
Delta /Delta Connection (b)	10,890	10,424	4.5%	99,059	106,624	-7.1%
Frontier/Lynx Aviation (e)	10,361	10,668	-2.9%	81,995	75,714	8.3%
US Airways (c)	0	3,224	N/A	517	50,560	N/A
United/United Express (d)	28,510	26,961	5.7%	244,170	236,702	3.2%
Total	75,708	79,090	-4.3%	656,066	705,410	-7.0%
Charters						
Other Charters	0	149	-100.0%	420	704	-40.3%
Total	0	149	-100.0%	420	704	-40.3%
Total enplaned passengers	75,708	79,239	-4.5%	656,486	706,114	-7.0%
Total deplaned passengers	74,734	77,552	-3.6%	652,130	705,384	-7.5%

- (a) Continental Express provided by ExpressJet.
- (b) Delta Connection provided by SkyWest and Mesaba.
- (c) US Airways provided by Mesa Air Group.

- (d) United Express provided by Mesa Air Group, SkyWest, and ExpressJet.
- (e) Service also provided by Republic Airways and Midwest



SUMMARY OF LANDED WEIGHT

Colorado Springs Airport

Landed weight by Airline	Month			Year-to-date		
	Sep-10	Sep-09	Percent change	2010	2009	Percent change
Scheduled Carriers						
Allegiant Air	3,589,000	2,771,000	29.5%	26,429,000	26,522,000	-0.4%
American /American Connection	18,265,000	21,918,000	-16.7%	175,617,000	181,294,000	-3.1%
Continental/Cont Express (a)	5,731,960	6,040,604	-5.1%	61,134,268	56,190,395	8.8%
Delta/Delta Connection (b)	11,505,700	10,029,500	14.7%	108,224,189	100,899,700	7.3%
Frontier/Lynx Aviation (e)	12,389,624	10,929,750	13.4%	108,191,132	90,649,000	19.4%
US Airways (c)	0	3,369,500	N/A	517,000	53,877,500	N/A
United/United Express (d)	34,456,000	31,476,000	9.5%	299,437,585	290,198,000	3.2%
Total	85,937,284	86,534,354	-0.7%	779,550,174	799,630,595	-2.5%
Cargo	9,057,380	6,580,500	37.6%	75,853,880	64,205,500	18.1%
Charter						
Other Charters	0	248,000	-100.0%	515,500	1,240,000	-58.4%
Total	0	248,000	-100.0%	515,500	1,240,000	-58.4%
Total landed weight	94,994,664	93,362,854	1.7%	855,919,554	865,076,095	-1.1%

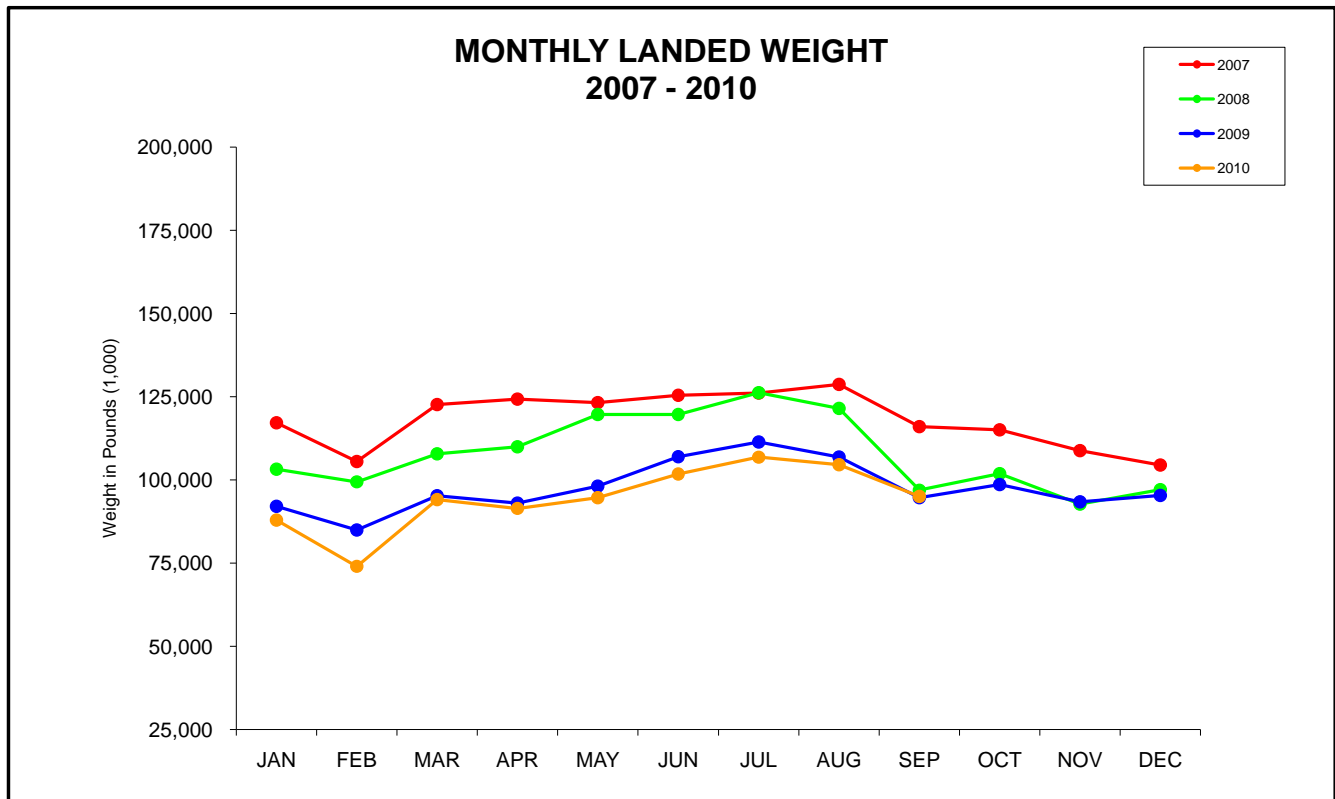
(a) Continental Express provided by ExpressJet.

(b) Delta Connection provided by SkyWest, Mesaba and Shuttle America.

(c) US Airways provided by Mesa Air Group.

(d) United Express provided by Mesa Air Group, SkyWest, and ExpressJet.

(e) Service also provided by Republic Airways and Midwest



SUMMARY OF FREIGHT AND MAIL

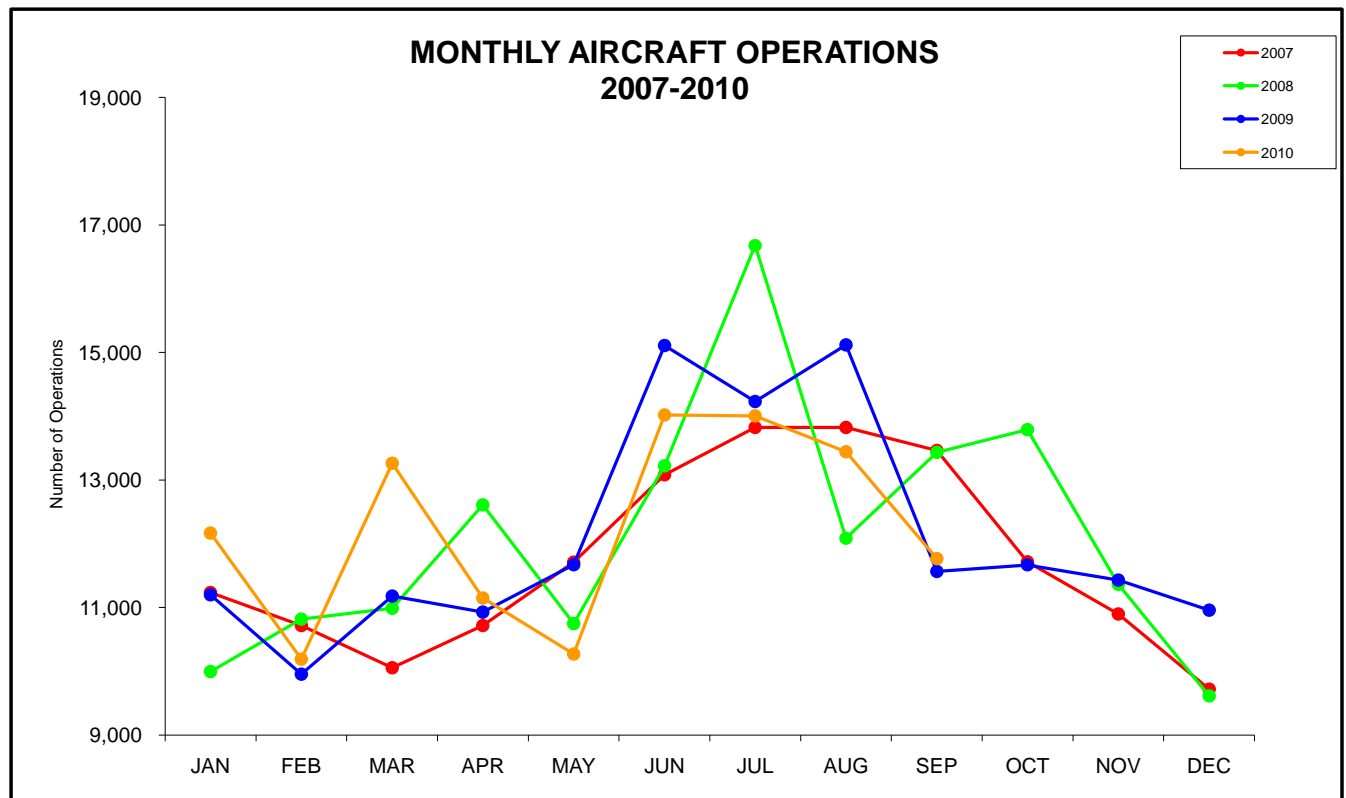
Colorado Springs Airport

	Month			Year-to-date		
	Sep-10	Sep-09	Percent change	2010	2009	Percent change
Freight/Cargo/Mail (lbs)						
Enplaned Freight/Cargo	1,070,955	653,354	63.9%	8,934,941	6,305,435	41.7%
Enplaned Mail	0	0	N/A	0	0	N/A
Deplaned Freight/Cargo	863,300	1,361,013	-36.6%	7,991,438	10,545,100	-24.2%
Deplaned Mail	0	0	N/A	633	313	N/A
Total Freight/Cargo/Mail (lbs)	1,934,255	2,014,367	-4.0%	16,927,012	16,850,848	0.5%

SUMMARY OF AIRCRAFT OPERATIONS

Colorado Springs Airport

	Month			Year-to-date		
	Sep-10	Sep-09	Percent change	2010	2009	Percent change
Aircraft Operations						
Air Carrier	1,497	1,540	-2.8%	14,719	15,243	-3.4%
Air Taxi	1,561	1,478	5.6%	13,375	13,795	-3.0%
General Aviation	5,576	5,456	2.2%	46,651	52,516	-11.2%
Military	3,130	3,093	1.2%	35,523	29,403	20.8%
Total Aircraft Operations	11,764	11,567	1.7%	110,268	110,957	-0.6%

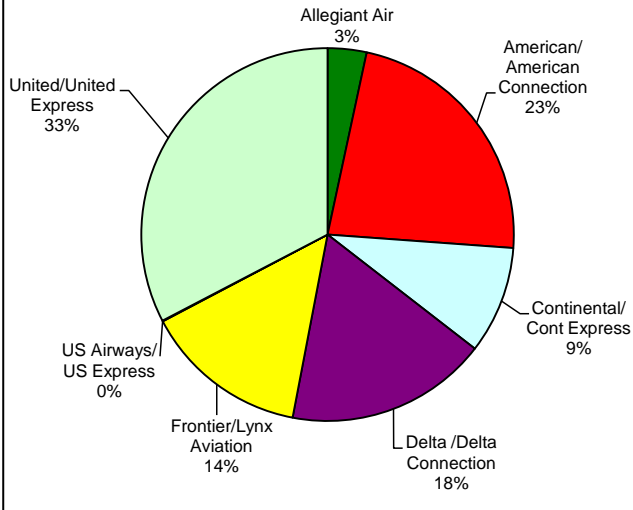


SUMMARY OF AIRLINE LOAD FACTORS

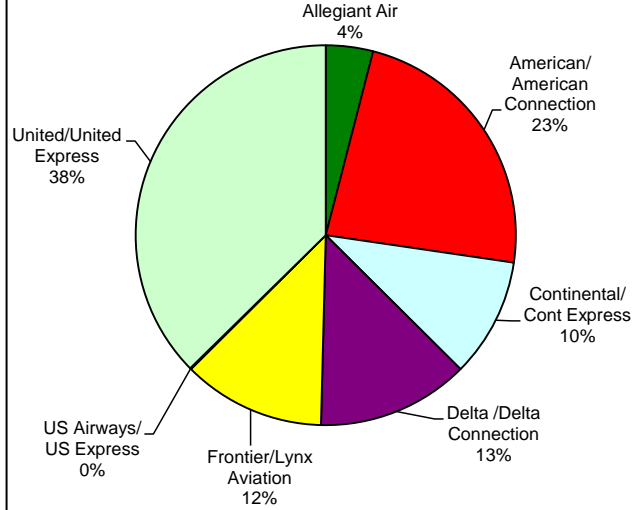
Colorado Springs Airport

Airline	September				Year-to-date			
	2010			2009	2010			2009
	Seats Available	Actual Enplaned	Load Factor	Load Factor	Seats Available	Actual Enplaned	Load Factor	Load Factor
Scheduled Carriers								
Allegiant Air	3,900	3,736	95.8%	84.8%	28,780	26,078	90.6%	88.2%
American	20,160	16,651	82.6%	81.6%	194,320	152,077	78.3%	70.9%
Continental/ Cont Express	6,500	5,560	85.5%	85.7%	79,646	66,476	83.5%	82.1%
Delta /Delta Connection	12,414	10,890	87.7%	87.5%	152,834	84,593	55.3%	81.9%
Frontier/Lynx Aviation	13,670	10,361	75.8%	72.3%	121,815	81,995	67.3%	61.4%
US Airways	0	0	N/A	N/A	550	517	94.0%	85.0%
United/United Express	35,104	28,510	81.2%	84.0%	278,535	244,170	87.7%	77.0%
Total Airline	91,748	75,708	82.5%	83.2%	856,480	655,906	76.6%	76.0%
Charters								
Other Charters	0	0	N/A	N/A	450	420	N/A	N/A

AMOUNT OF SEATS AVAILABLE YTD



% OF ENPLANEMENTS YTD



SUMMARY OF AIRLINE SEATS AVAILABLE

Colorado Springs Airport

Airline	Month			Year-to-date		
	Sep-10	Sep-09	Percent change	2010	2009	Percent change
Scheduled Carriers						
Allegiant Air	3,900	2,960	31.8%	28,780	28,430	1.2%
American/American Connection	20,160	24,360	-17.2%	194,320	200,356	-3.0%
Continental/ Cont Express	6,500	6,850	-5.1%	62,800	63,600	-1.3%
Delta /Delta Connection	12,414	12,056	3.0%	152,834	124,768	22.5%
Frontier/Lynx Aviation	13,670	13,098	4.4%	121,815	106,312	14.6%
US Airways	0	3,608	N/A	550	59,508	N/A
United/United Express	35,104	32,032	9.6%	278,535	295,360	-5.7%
Total Airline	91,748	94,964	-3.4%	839,634	878,334	-4.4%
Charters						
Other Charters	0	150	N/A	450	900	-50.0%

