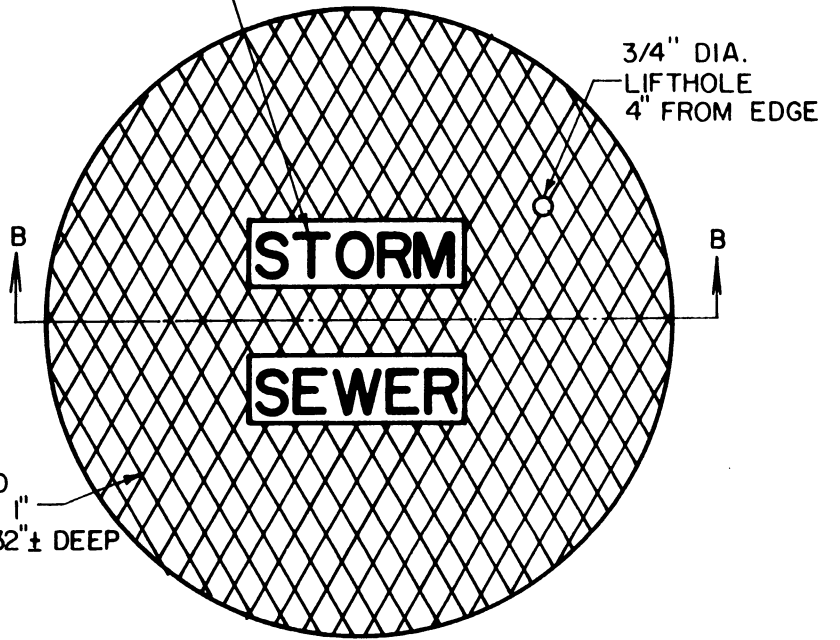
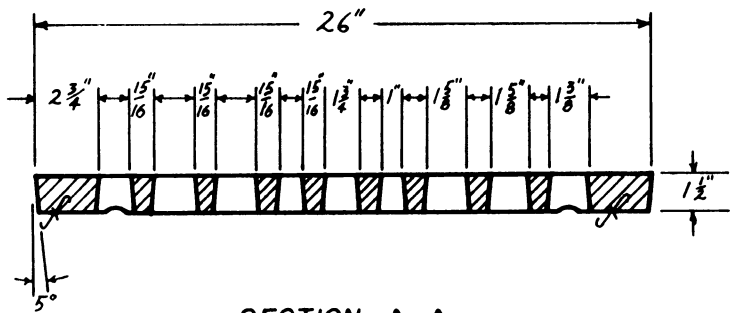


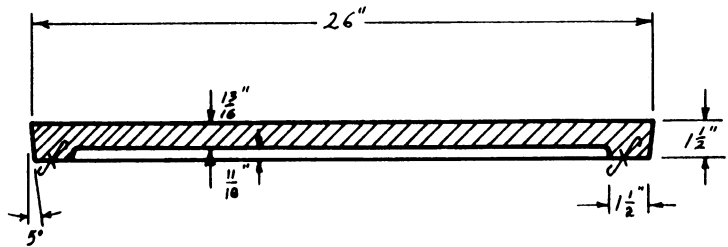
2" STD. LETTERING  
FLUSH WITH TOP



TYPE "C" LID  
DESIGN 1" X 1"  
SCORED 1/32" ± DEEP



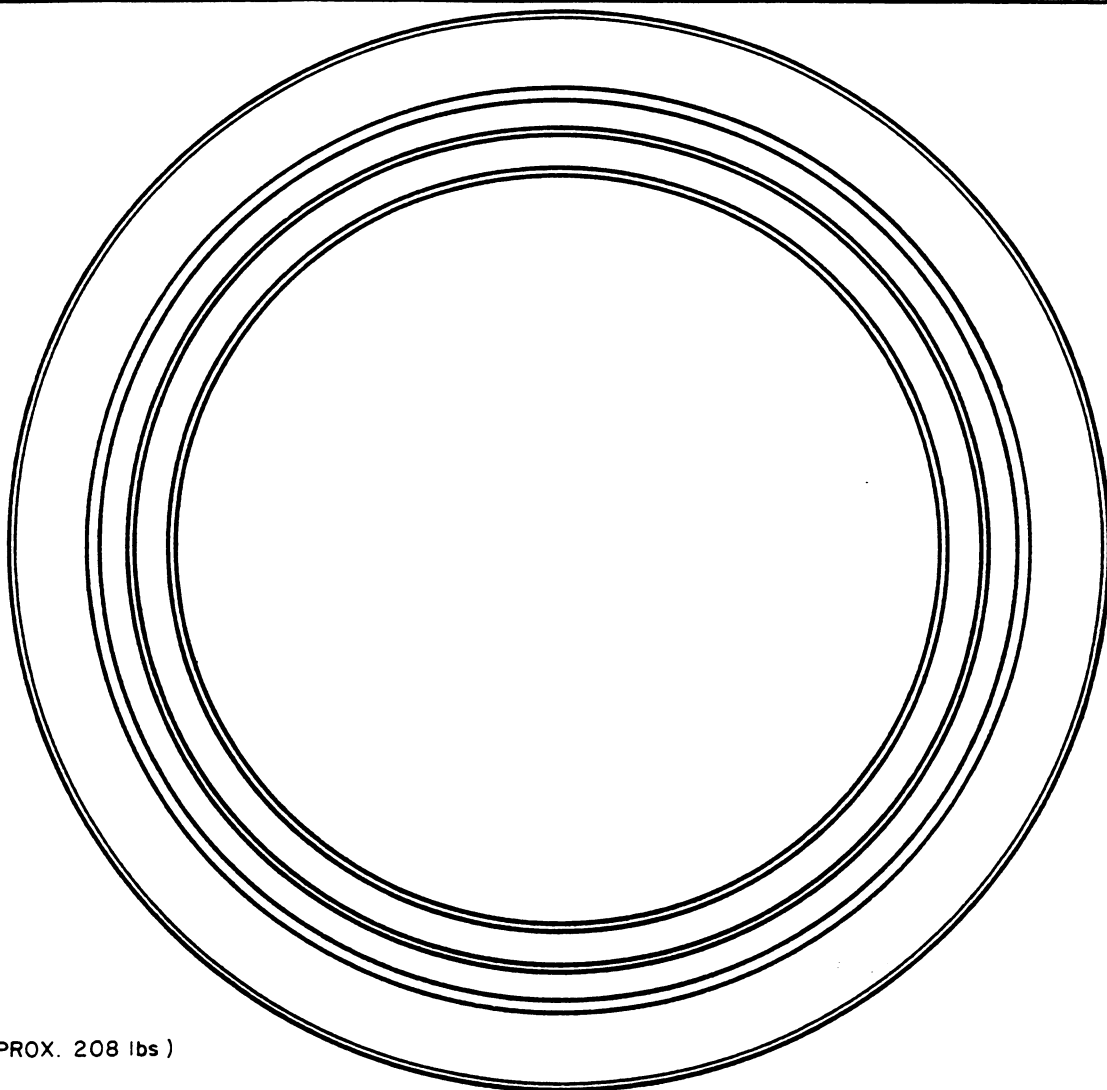
**SECTION A-A**  
(APPROX. 175 lbs)



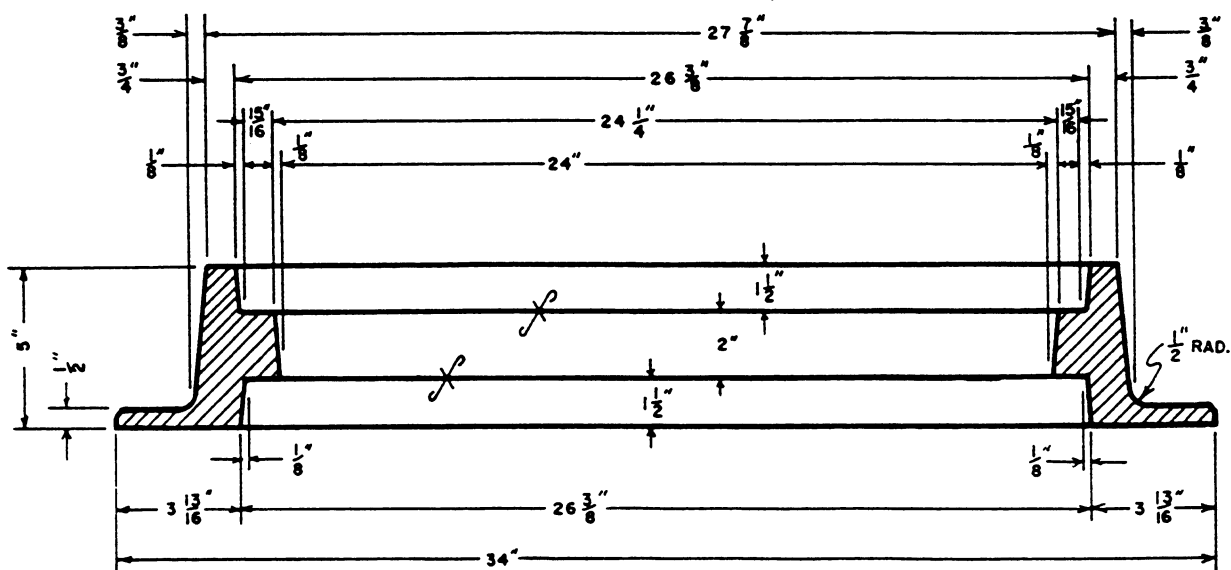
**SECTION B-B**  
(APPROX. 144 lbs)

**STORM SEWER  
GRATE & LID**  
1/2" = 1'-0"

CITY OF COLORADO SPRINGS			
STORM SEWER GRATE & LID			
APPROVED BY: <i>Ray E. Raynes</i>			
CITY ENGINEER			
SCALE:	DATE:	DRW:	D-17A
SHOWN 10-84		28	SHT. 1 OF 2



(APPROX. 208 lbs)



**STORM SEWER REVERSIBLE FRAME**

CITY OF COLORADO SPRINGS			
STORM SEWER REVERSIBLE FRAME			
APPROVED BY: <i>Ray P. Payne</i>			
CITY ENGINEER			
SCALE: 2" = 1'	DATE: 10-84	DRW: 25	D-17.8
SHT. 2 OF 2			

REVISED JAN '89 PLB WEIGHT ADDED