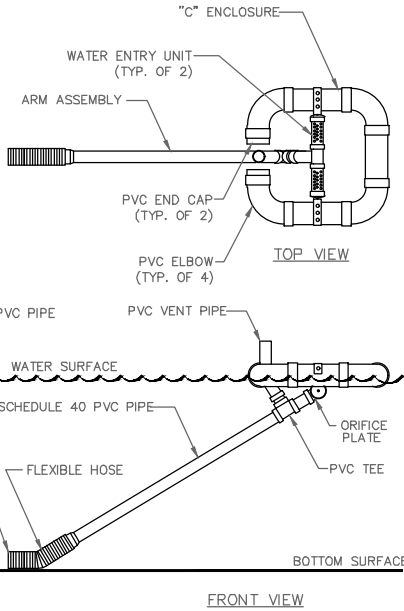


NOTES:

1. SKIMMER WITH "X" DIAMETER HEAD (OR ENGINEER APPROVED EQUAL).
2. IF SKIMMER IS COMMERCIALY AVAILABLE, INSTALL, DEWATER, AND MAINTAIN PER MANUFACTURER'S SPECIFICATIONS.
3. DETAIL PER PENNSYLVANIA EROSION AND SEDIMENTATION CONTROL MANUAL, MARCH 2000 ISSUE.



(SK) SKIMMER (SEDIMENT BASIN)  
N.T.S.

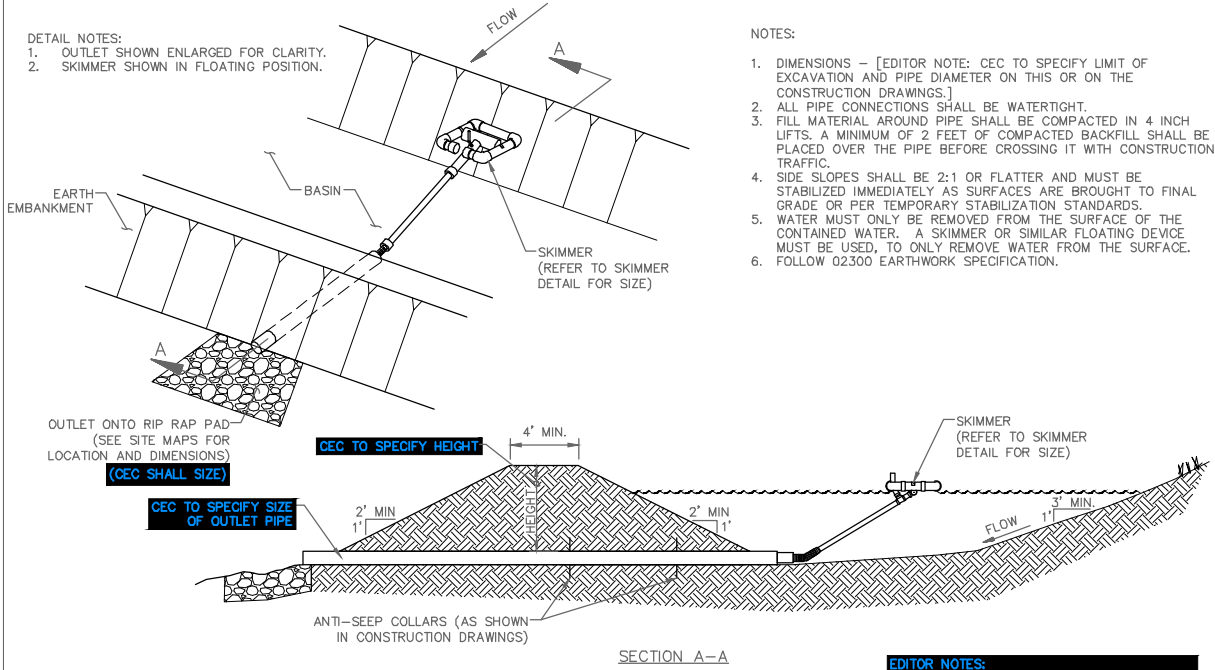
SOURCE BOX

LAST REVISED: APRIL 30, 2011  
STANDARD DETAIL

EDITOR NOTES:  
1. SPECIFY SIZE OF SKIMMER AND HEAD.  
2. CEC MAY PROVIDE ALTERNATIVE SYSTEM OR DETAIL THAT DISCHARGES FROM TOP OF WATER COLUMN.

DETAIL NOTES:

1. OUTLET SHOWN ENLARGED FOR CLARITY.
2. SKIMMER SHOWN IN FLOATING POSITION.



NOTES:

1. DIMENSIONS - [EDITOR NOTE: CEC TO SPECIFY LIMIT OF EXCAVATION AND PIPE DIAMETER ON THIS OR ON THE CONSTRUCTION DRAWINGS.]
2. ALL PIPE CONNECTIONS SHALL BE WATERTIGHT.
3. FILL MATERIAL AROUND PIPE SHALL BE COMPACTED IN 4 INCH LIFTS. A MINIMUM OF 2 FEET OF COMPACTED BACKFILL SHALL BE PLACED OVER THE PIPE BEFORE CROSSING IT WITH CONSTRUCTION TRAFFIC.
4. SIDE SLOPES SHALL BE 2:1 OR FLATTER AND MUST BE STABILIZED IMMEDIATELY AS SURFACES ARE BROUGHT TO FINAL GRADE OR PER TEMPORARY STABILIZATION STANDARDS.
5. WATER MUST ONLY BE REMOVED FROM THE SURFACE OF THE CONTAINED WATER. A SKIMMER OR SIMILAR FLOATING DEVICE MUST BE USED, TO ONLY REMOVE WATER FROM THE SURFACE.
6. FOLLOW 02300 EARTHWORK SPECIFICATION.

EDITOR NOTES:  
1. CEC SHALL DESIGN/SPECIFY OUTLET CONTROL STRUCTURES THAT WITHDRAW WATER FROM THE SURFACE.  
2. CEC TO MODIFY THIS DETAIL IF ALTERNATE TO PA DESIGN MANUAL SKIMMER IS USED.  
3. CEC TO SPECIFY COMPONENTS/MATERIALS.

SEDIMENT BASINS					
BASIN NAME	DRAINAGE AREA (ACRES)	DESIGN VOLUME (CU.FT.)	DESIGNED RETENTION TIME (HRS.)	PERMANENT (Y OR N)	EMERGENCY OUTLET TYPE
BASIN 1					
BASIN 2					
...					

MAINTENANCE NOTES:

1. SEDIMENT BASINS MUST BE INSPECTED AND MUST BE CLEANED WHEN THE ORIGINAL CAPACITY HAS BEEN REDUCED BY 50 PERCENT OR LESS, AS REQUIRED BY GOVERNING AGENCY.
2. ALL MATERIAL EXCAVATED FROM BEHIND SEDIMENT BARRIERS OR FROM BASINS SHALL BE INCORPORATED INTO ON-SITE SOILS OR SPREAD OUT ON AN UPLAND PORTION OF THE SITE AND STABILIZED.
3. VERIFY THAT NO EROSION IS OCCURRING AT DISCHARGE POINTS TO AND FROM IMPOUNDMENTS AND VERIFY THAT BASIN SIDE SLOPES ARE STABILIZED AND SHOW NO SIGNS OF EROSION.
4. OUTLET STRUCTURES IN SEDIMENT BASINS SHALL BE MAINTAINED IN OPERATIONAL CONDITIONS AT ALL TIMES.

SOURCE BOX

LAST REVISED: APRIL 30, 2011  
STANDARD DETAIL

(SB) SEDIMENT BASIN WITH PIPE OUTLET  
N.T.S.